

## Millennium Expert/Enterprise

---

### Technical Bulletin

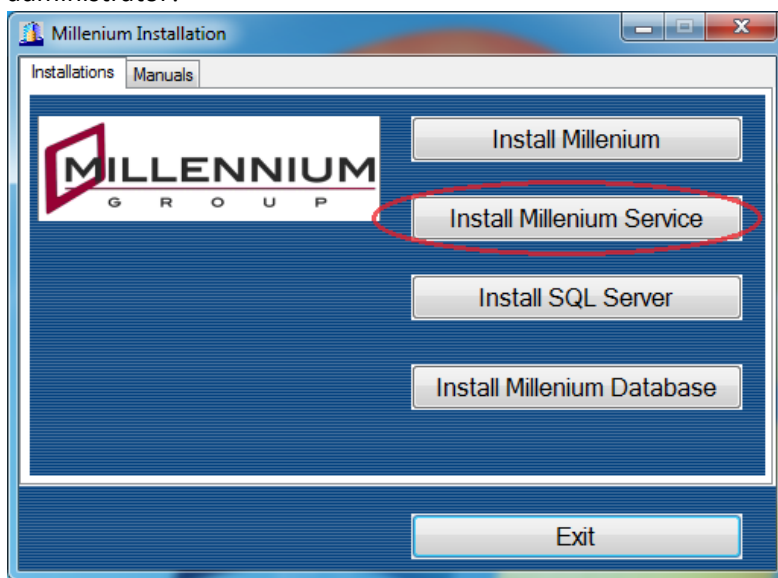
#### Title: Configuring Millennium Enterprise to Run As a Service

#### Contents:

You can configure Millennium Enterprise to run as service on your server. To make this configuration follow the next steps:

1. Install Millennium Enterprise as Server. For more information about installation see document "How to install Millenium.doc"
2. Before installing Millennium Service make sure that you have activated network license on Millennium Server.
3. Run Millennium installer from installation CD and press "Install Millennium Service" button.

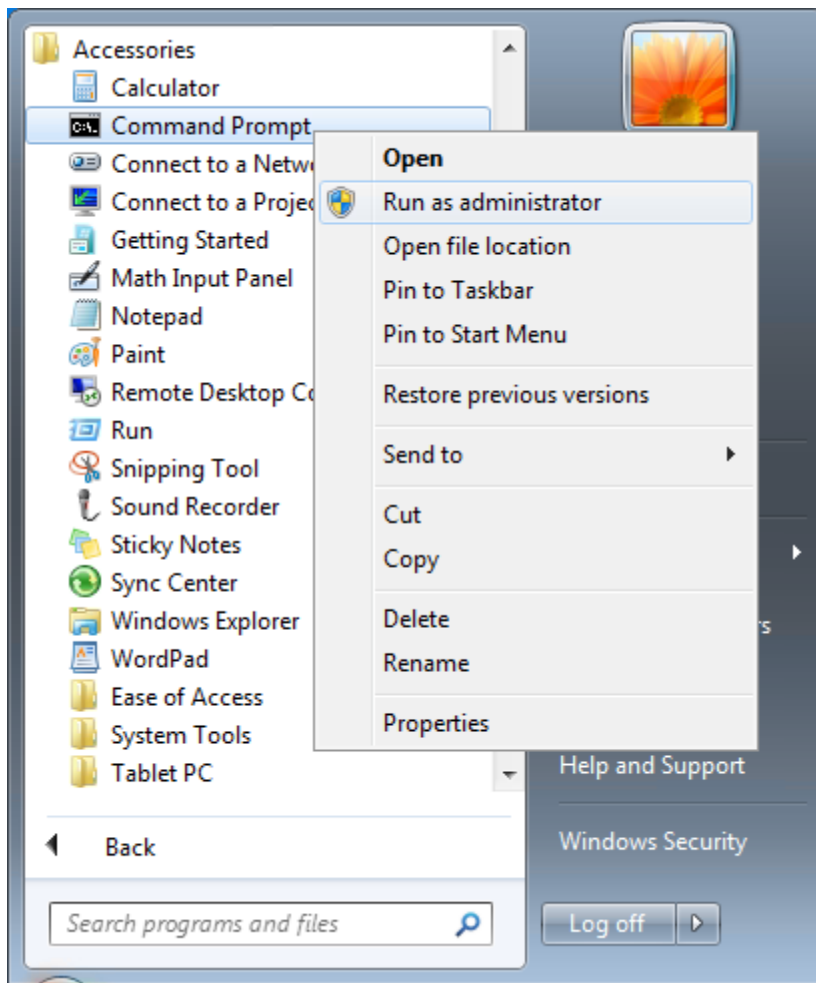
Note: If you are using Windows Vista or later you need to run Millennium installer as administrator!



Or you can configure Millennium Service manually.

Go to Start -> Accessories -> Command Prompt

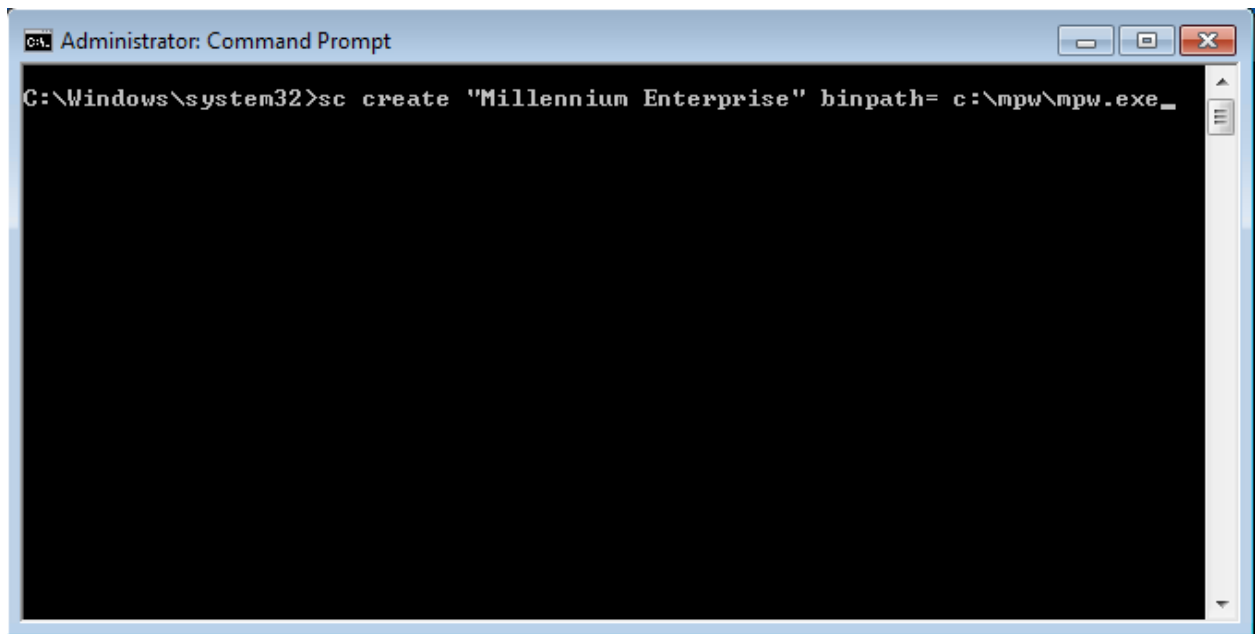
If you are using Windows Vista or higher then run Command Prompt as Administrator.



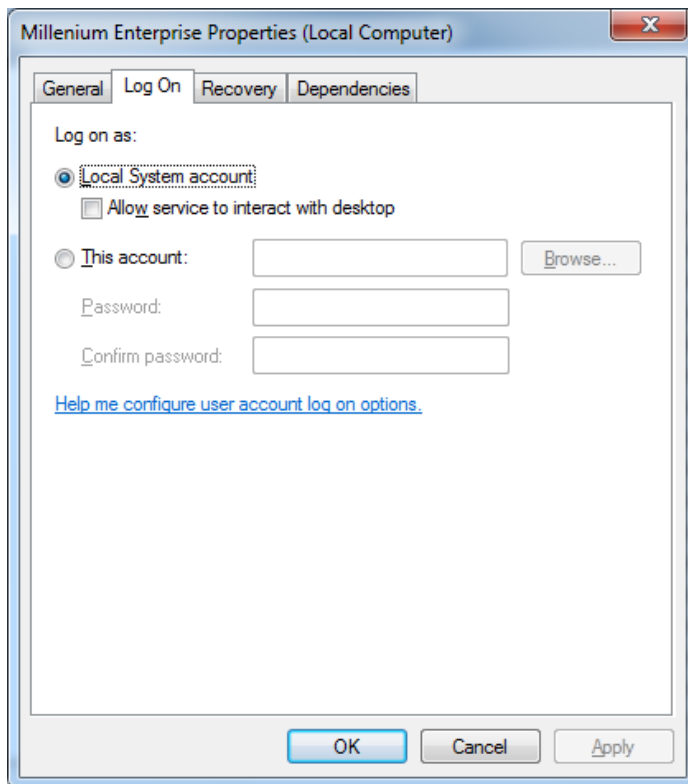
In command prompt execute command:

sc create "MilleniumEnterprise" binpath= *mpw\_installation\_folder\_path*\mpw.exe

where *mpw\_installation\_folder\_path* is the path where Millennium installed. For example  
c:\mpw



4. Go to "Control Panel" -> "Administrative Tools" -> "Services" and find "Millennium Enterprise" Service.
5. Right click on service and select Properties. Go to "Log on" tab and enter logon options.  
If service will run under current Windows logon you can leave "Local System account" option.  
If you will use another user login to run Millennium service then choose "This account" option and enter an account that has SQL database permissions for Millennium Enterprise.



6. Click "Apply" to save changes.
7. Start service pressing "Start" link.

