



Millennium Xtra

Technical Bulletin

Title: Restoring Database Backup in Xtra

Contents:

To restore database backup login to the Xtra system and go to **System Administration > Database Functions**.

Current Threat Level: Normal

System Administration | Cardholder Data | Event Monitoring | Hardware Configuration | System Configuration | Reports | Historical Log | Maps

Millennium Xtra

Logged User: admin | Time Online: 00:11 | Base Online: 17:40

Operator Privileges | Operator-defined Fields | Threat Levels | Database Functions | Diagnostics | Company Information | Customer Settings

Import Cardholders Data

Export Cardholders Data

Database Backup Schedule

Restore Database

Backup Settings

Import Cardholder Data

DATA SOURCE

Data Source File (Zip archive or file):

Image Source File (Zip archive):

Sign Source File (Zip archive):

SELECTED IMPORT FILE FORMAT

☒ Comma delimited

☐ Tab delimited

☐ Excel file

☐ XML

☐ ADO.NET Dataset

FIELD HEADERS

☒ Field headers are included in file

©2000–2013 Millennium Group, Inc. [Change Password](#) - [Company Info](#) - [Privacy Policy](#) - [Open in Separate Window](#)

If you received the backup file from technical support then you'll first need to put it in right folder. To find out what folder set as backup folder select "Backup Settings" in left menu. Path in "Backup Folder" is the path to folder where backups are stored.

Note: Typically path on local machine is:

X86 Windows: **C:\Program Files\MillenniumGroup\MilleniumXtra\WebSiteComponent\Backup**

X64 Windows: **C:\Program Files (x86)\MillenniumGroup\MilleniumXtra\WebSiteComponent\Backup**

Current Threat Level: **Normal**

System Administration | Cardholder Data | Event Monitoring | Hardware Configuration | System Configuration | Reports | Historical Log | Maps

Logged User: admin Time Online: 00:18 Base Online: 17:47

Operator Privileges | Operator-defined Fields | Threat Levels | **Database Functions** | Diagnostics | Company Information | Customer Settings

Import Cardholders Data
Export Cardholders Data
Database Backup Schedule
Restore Database
• **Backup Settings**

Backup Settings

BACKUP FOLDER
\\WIN7SP1PC\Backup\

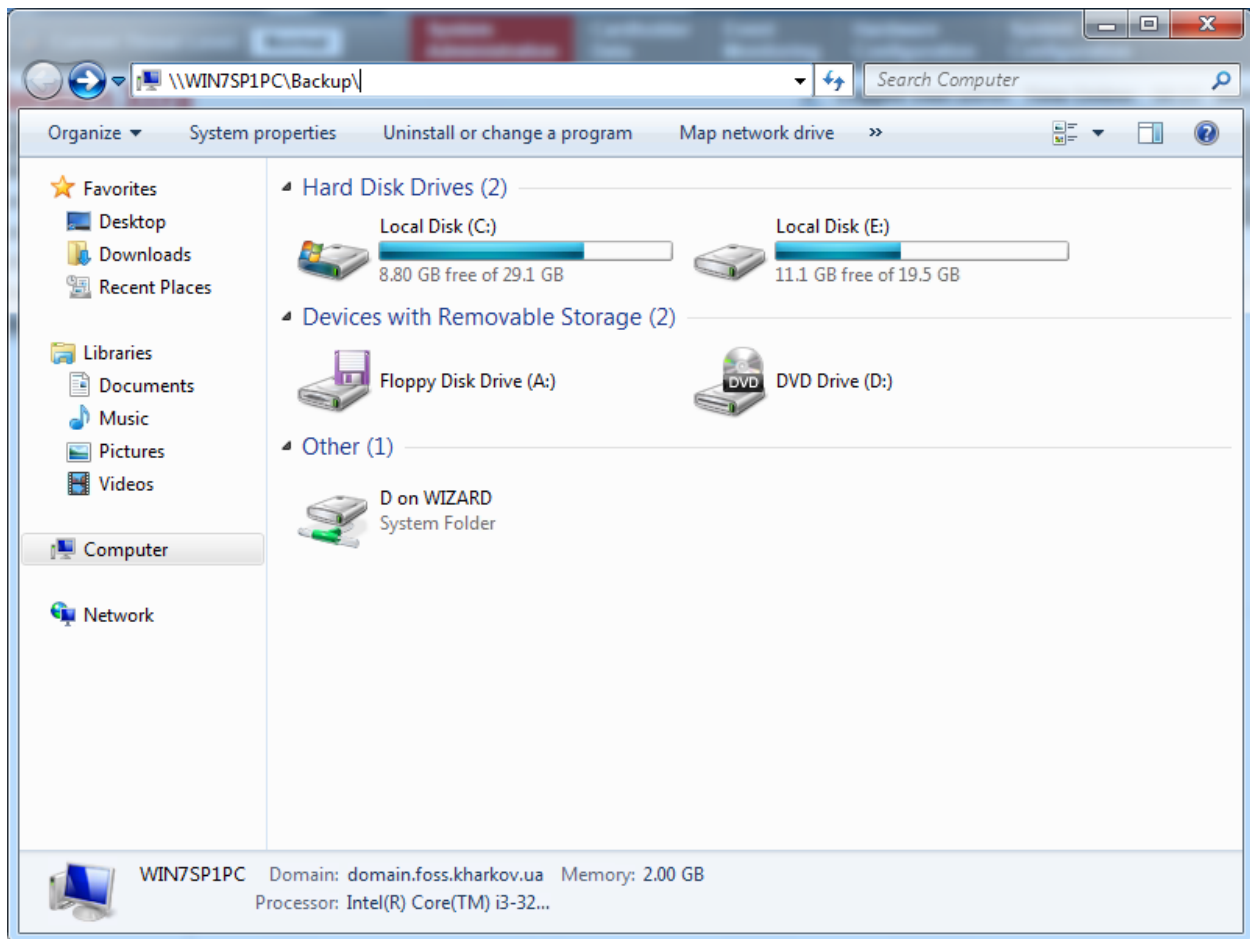
BACKUP IMAGE SETTINGS
☐ Process backup without cardholder images
☐ Process backup without floor map images

HISTORICAL LOG TIME LIMIT
☐ Delete Log Entries after: 0 Months 0 Days

Save Cancel Help

javascript:void(0); Millennium Group, Inc. [Change Password](#) - [Company Info](#) - [Privacy Policy](#) - [Open in Separate Window](#)

Copy this path to clipboard, open **My Computer** and paste path to address bar. Hit enter to go to the folder.

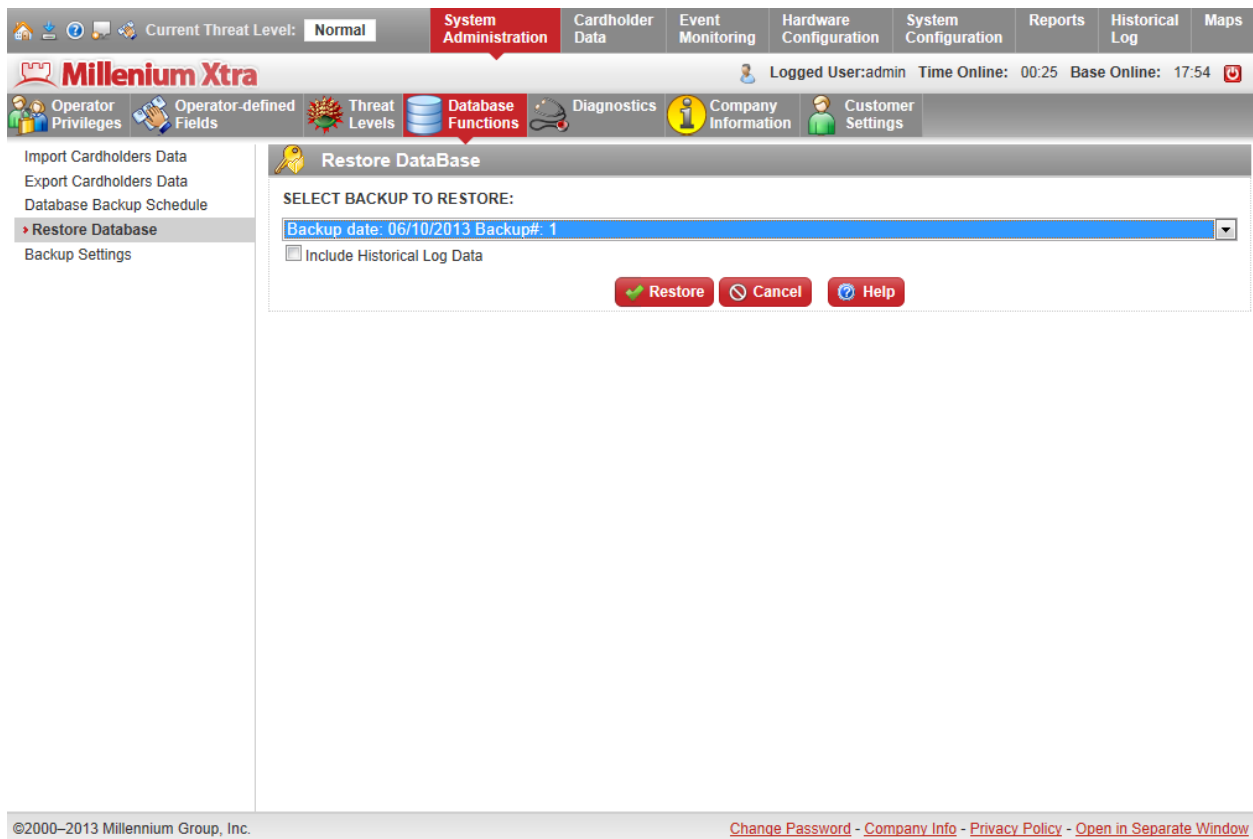


Copy database backup file received from technical support in this folder.

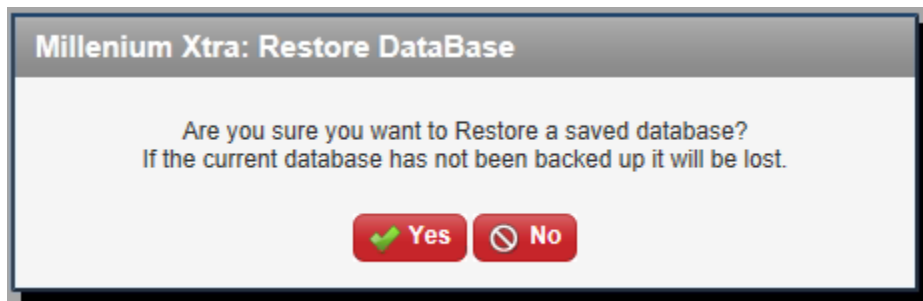
Go back to Millennium Xtra.

On the left menu, select **Restore Database**. Select backup to restore from dropdown list.

Note: The name of backup file includes date of backup. This date will be displayed in dropdown list with backups.



Click **Restore** and confirm restoring by clicking **Yes**.



After the restore is complete system will display the message:

