



## Millennium Xtra

### Technical Bulletin

#### Title: Configuring Alarms in Xtra

#### Contents:

#### Setting up Alarm

To setup Alarm go to **System Configuration > Alarm/Event Definition**.

Current Threat Level: Normal

System Administration | Cardholder Data | Event Monitoring | Hardware Configuration | **System Configuration** | Reports | Historical Log | Maps

Current Partition: Default Partition | Logged User: admin | Time Online: 00:23 | Base Online: 16:49

Time Periods | Holidays | Access Levels | Groups | Alarm Routing Templates | Alarm Acknowledgment Templates | **Alarm/Event Definition** | Hot Commands Configuration

Controllers

- All Controllers
- Controller-1
- Controller-2

Doors

Elevators

Outputs

Inputs

Cardholders

Sites

Door Groups

Elevator Groups

Output Groups

Input Groups

Cardholder Groups

DMP Panels

DMP Area

System

Alarm/Event Definition

Selected Device Name: All Controllers | Event Name: | Event Source: Any | Select Event Source

Create an Alarm Definition | Create an Event Definition | Alarm Trigger Delay: 00:00:00 | hh:mm:ss | Play Sound in Events/Alarm Monitor

Alarm Acknowledgment Template: | Alarm Time Period: |

LINK TO AN OUTPUT

Output: | Output Action: Activate | Output Time Period: |

LINK TO AN INPUT

Input | Input Groups | Input Time Period: | Duration Time: 00:00:00 | hh:mm:ss | Action: Shunt | Unshunt

SELECT TEMPLATES

Routing Template: | Hot Command: | Floor Map: |

CURRENT DEFINITIONS

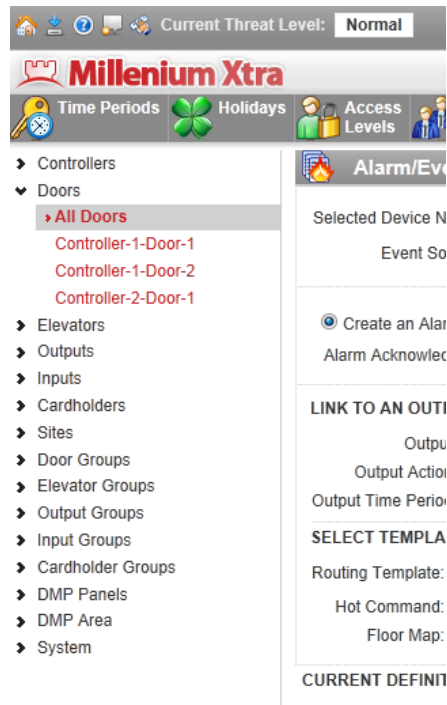
Clear / New | Add / Update | Delete Selected

Is Alarm	Alarm Name	Ask Template	Alarm Trigger Delay	Alarm Time Period	Output Event	Output Time Period	Routing Template	Input Group	Input Name	Input Time Period
----------	------------	--------------	---------------------	-------------------	--------------	--------------------	------------------	-------------	------------	-------------------

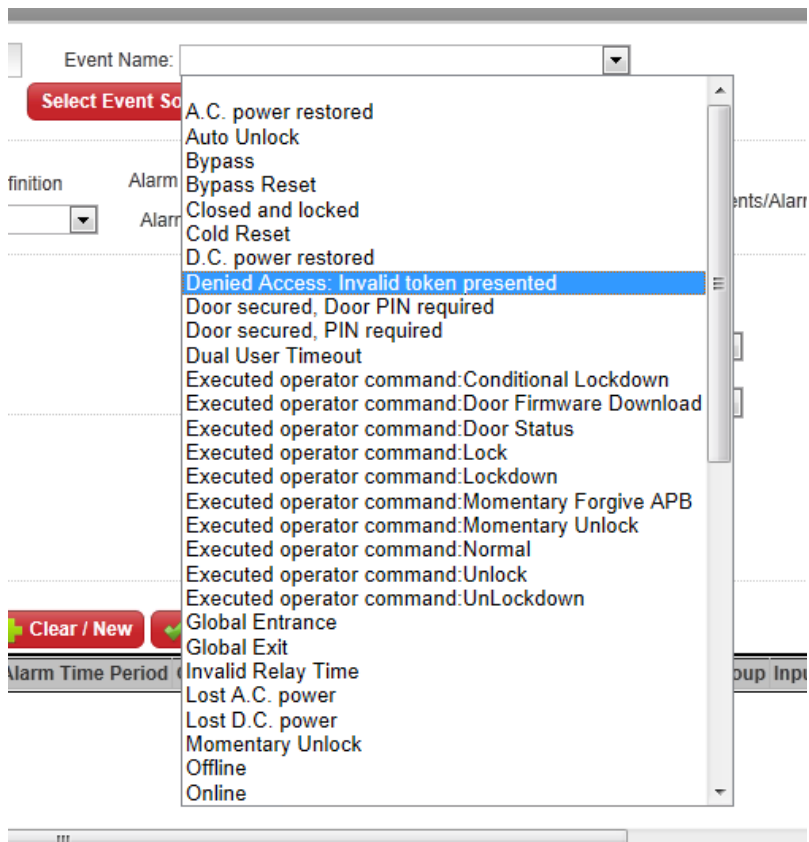
Save | Cancel | Defined Alarms/Events | View Report | Help

©2000–2013 Millennium Group, Inc. | Change Password - Company Info - Privacy Policy - Open in Separate Window

1. Select device type for which you want to create Alarm. You can setup Alarm definition for all devices of selected type or for one particular device.

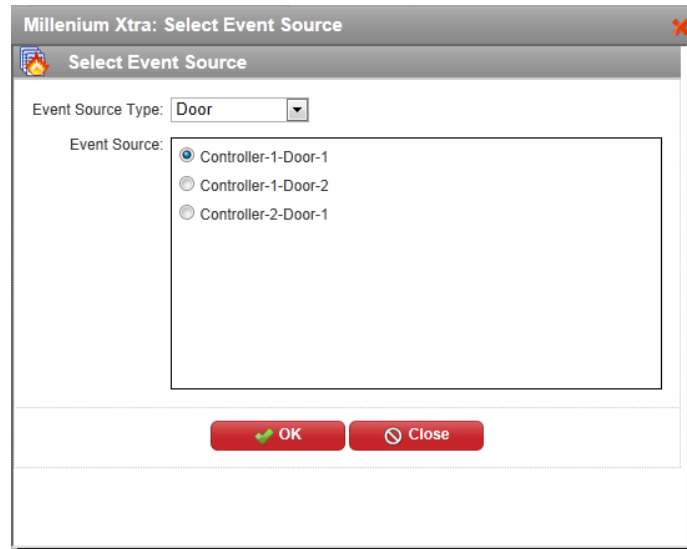


2. Select **Event Name**. When system receives this event Alarm will be generated.



3. Select **Event Source** if necessary. Alarm will be generated when particular Event will be received from particular source. You can select 'Any' as Event Source. In this case Alarm will be generated if event will be received from any source.

Click **Select Event Source** button. Then select **Event Source Type** and **Event Source**. Click **Ok**.



4. Select **Create an Alarm Definition** option.

A screenshot of a configuration screen. At the top, it says "Event Source: Door: Controller-1-Door-1" next to a red "Select Event Source" button. Below this, there are two radio button options: "Create an Alarm Definition" (which is selected and highlighted with a red rectangular box) and "Create an Event Definition". To the right of these options, the words "Alarm" and "Alar" are partially visible. Below the radio buttons is a label "Alarm Acknowledgement Template:" followed by a dropdown menu. At the bottom, there is a section titled "LINK TO AN OUTPUT" with a text input field.

5. If you need to postpone Alarm occurrence enter time for delay in **Alarm Trigger Delay** field.

A screenshot of a configuration screen. At the top, there is a label "Event Name:" followed by a dropdown menu. Below this is a red "Select Event Source" button. Further down, there is a label "Alarm Trigger Delay:" followed by a text input field showing "00:00:00" and "hh:mm:ss". This field is highlighted with a red rectangular box. To the right of this field is a checkbox labeled "Play Sound in Events/Alarm Monitor". Below these elements is a section titled "LINK TO AN INPUT" with a text input field.

**Note:** If system receives event that resets Alarm during delay period Alarm will not be generated.

6. If you want to require acknowledgement for Alarm then select **Alarm Acknowledgement Template**.

☒ Create an Alarm Definition    ☐ Create an Event Definition    Alarm

Alarm Acknowledgement Template: ▼ Alarm

**LINK TO AN OUTPUT**

Output: ▼

Output Action: Activate

Output Time Period: ▼

**SELECT TEMPLATES**

7. Select **Alarm Time Period** from dropdown list. Alarm will trigger only during this Time Period.

Alarm Trigger Delay: 00:00:00 hh:mm:ss

Alarm Time Period: ▼

LINK ☒ ☐

8. Check **Play Sound in Events/Alarm Monitor** if you want to have audio Alarm notification.

Alarm Trigger Delay: 00:00:00 hh:mm:ss

Alarm Time Period: 8-5pm Mon-Fri ▼

☒ Play Sound in Events/Alarm Monitor

9. You can link Alarm to the Input or Output of the Controller. This means that when Alarm triggers system will send selected action to the selected input or output.

**LINK TO AN OUTPUT**

Output: Controller-1-RCD-1 Supervisor ▼

Output Action: Activate ▼

Output Time Period: ▼

**SELECT TEMPLATES**

Routing Template: ▼

Hot Command: ▼

Floor Map: ▼

**LINK TO AN INPUT**

☒ Input    Controller-1-Inp-2 ▼

☐ Input Groups

Input Time Period: 8-5pm Mon-Fri ▼

Duration Time: 00:00:00 hh:mm:ss

Action: ☐ Shunt    ☒ Unshunt

10. Select Templates. These templates will be executed when Alarm triggers.

## SELECT TEMPLATES

Routing Template:

Hot Command:

Floor Map:

- Click **Add/Update** button when you enter all settings. Record with Alarm Definition will appear in list of Current Definitions. Click **Save** button to save changes to the database.

CURRENT DEFINITIONS

Is Alarm	Alarm Name	Ask Template	Trigger Delay	Alarm Time Period	Output	Output Action	Output Time Period	Routing Template	Input Group
<input checked="" type="checkbox"/>	All Doors-Denied Access: Invalid token pr...	Invalid all controller functions	00:00:00	8-5pm Mon-Fri	Controller-1-RCD-1 Supervisor Relay	Activate		Alarm Default Routing	

## Setting up Alarm Acknowledgement

To setup Alarm Acknowledgement go to **System Configuration > Alarm Acknowl. Templates**.

Current Threat Level: **Normal**
 System Administration | Cardholder Data | Event Monitoring | Hardware Configuration | **System Configuration** | Reports | Historical Log | Maps

Time Periods | Holidays | Access Levels | Groups | Alarm Routing Templates | **Alarm Acknowl. Templates** | Alarm/Event Definition | Hot Commands Configuration

Logged User: admin | Time Online: 02:38 | Base Online: 19:04

### Alarm Acknowledgement Template Configuration

Template Name:

Priority: 
 Acknowledgements:

Primary Acknowledgement required within:  hh:mm:ss
 Each Auxiliary Acknowledgement required within:  hh:mm:ss

**OPTIONS**

☒ Active Alarm Clear  
☐ Auto Alarm Clear  
☒ Acknowledgement Comment Required

**SELECT ALARM ACTION MESSAGE**

Controller Alarm Message

Investigate alarm for the controller identified.

©2000–2013 Millennium Group, Inc.
 [Change Password](#) - [Company Info](#) - [Privacy Policy](#) - [Open in Separate Window](#)

- Click **New** button to add new template.

2. Enter **Template Name**

Template Name:

Priority:

Acknowledgements:

3. Set **Priority**.

Template Name:

Priority:

Acknowledgements:

4. Select quantity of Acknowledgements for Alarm.

Template Name:

Priority:

Acknowledgements:

5. Enter time for Acknowledgement response. Primary acknowledgement is a first acknowledgement. The rest of acknowledgements are auxiliary acknowledgements. In our case we set two acknowledgements. It means that one is the primary and one is an auxiliary acknowledgement.

Primary Acknowledgement required within:  hh:mm:ss

Each Auxiliary Acknowledgement required within:  hh:mm:ss

6. Select additional options for acknowledgement.

Active Alarm Clear - when checked, only active alarm for the current Alarm Acknowledgement Template is cleared.

Auto Alarm Clear – when checked, alarm(-s) for the current Alarm Acknowledgement Template are cleared automatically.

Acknowledgement Comment Required – when checked, Alarm Acknowledgement Comment(-s), which are set with the help of "Edit Acknowledge Comments" button, will be displayed on alarm.

## OPTIONS

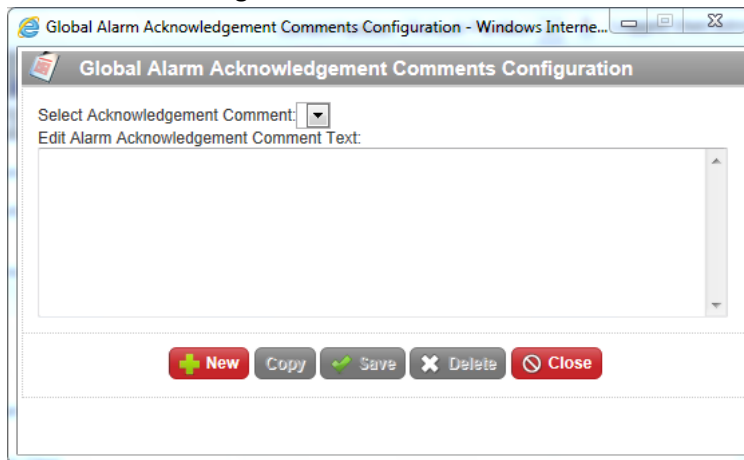
☒ Active Alarm Clear

☐ Auto Alarm Clear

☒ Acknowledgement Comment Required

**Edit Acknowledge Comments**

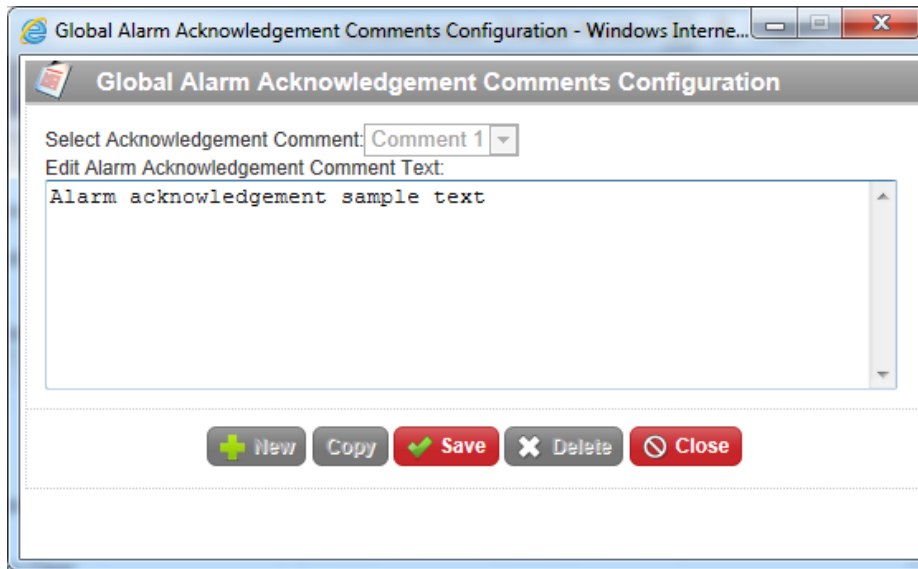
7. Add comments to Acknowledgement Template.  
Click **Edit Acknowledgement Comments** button.  
In Comments Configuration window click **New** button.



Enter comment name and click **Ok**.

Alarm Acknowledgement  
Comments Name:

Enter comment text and click **Save**.



8. Select Alarm Action Message. You can add or edit messages by clicking **Edit Alarm Action Message**.

**SELECT ALARM ACTION MESSAGE**

**Cardholder Event message** **Edit Alarm Action Message**

Cardholder operation event. Investigate card use identified and acknowledge.

9. Save Acknowledgement Template by clicking **Save** button.