



Millennium Xtra

Technical Bulletin

Title: Installing and Configuring Salto software to communicate with Xtra

Contents:

This document explains how to install and configure the Salto software for integration with Xtra. It assumes that Xtra is already installed and that Salto integration is enabled in the license.

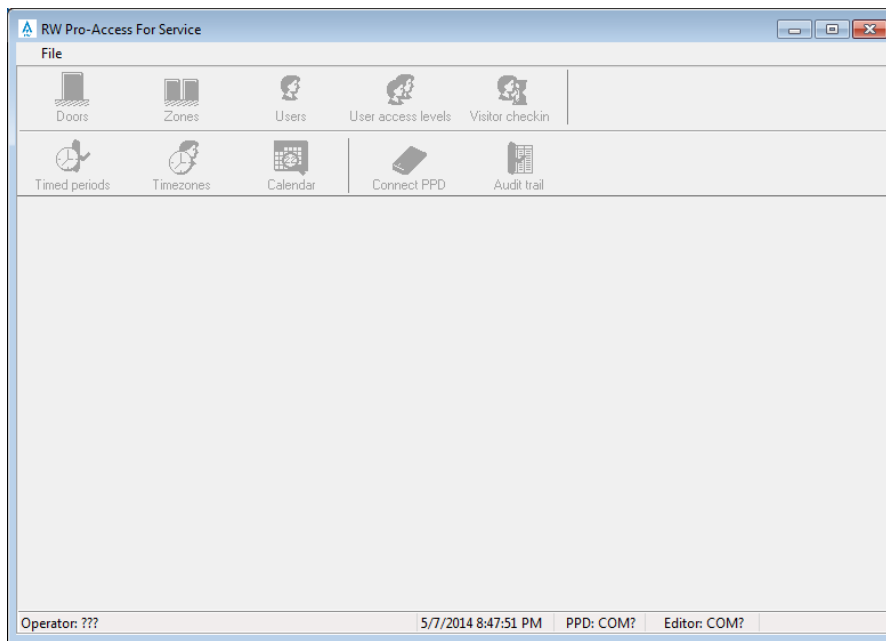
Procedure:

The Salto software consists of two installation pieces:

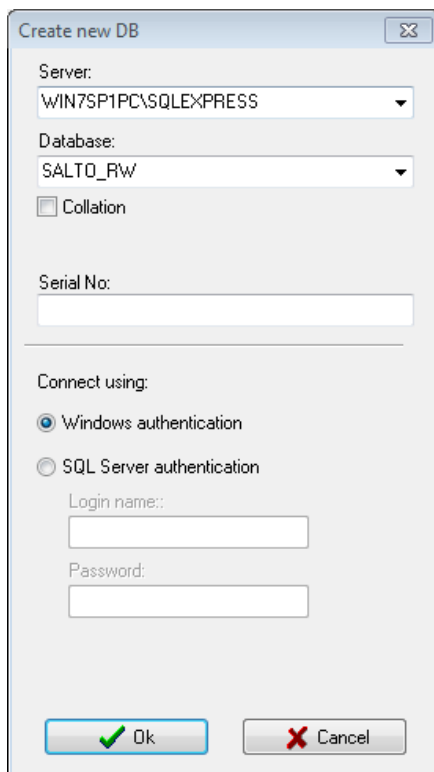
1. Setup_PAForServiceRW_SQL.exe
2. SetupSALTOService.msi

The first installation provides the Salto GUI software, which is required for configuring the Salto locks, timezones and groups. The second installation provides the background service, which handles communications between Millennium Xtra and Salto.

1. Install **Setup_PAForServiceRW_SQL.exe** by clicking on the file. The installation should start. Accept the license terms and the defaults shown.
2. Install SetupSALTOService.msi. Accept the license terms and the defaults shown.
3. Create and configure the database. From the Start menu, select **Salto -> RW Pro-Access For Service SQL**. The following screen appears:

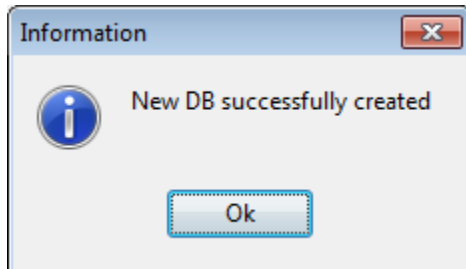


4. Go to **File -> New DB -> New DB:**

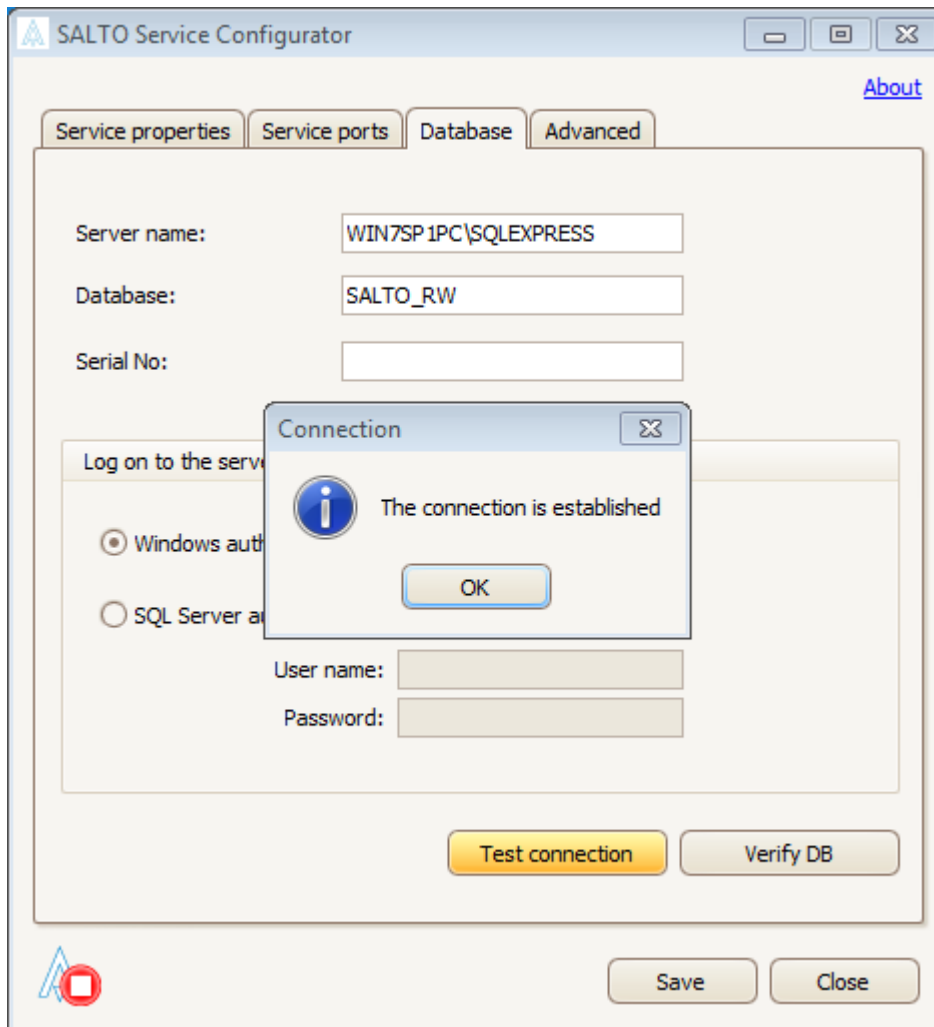


Type the full name of the Microsoft SQL Server that the Salto software will use. This server can be located anywhere on the local network. This server should be Microsoft SQL 2005 or above.

5. Verify the type of authentication to be used. Normally, this is Windows. Make sure the logged on user has **sysadmin** rights on the SQL Server, otherwise the database creation in the next step will fail.
6. Enter **database name** or leave default name. Click **Ok**. After successfully creating a database you will be prompted with message:



7. Run Salto Configurator from **Start -> Salto -> SALTO Service RW Configurator**. Go to **Database** tab. Enter **Server Name** and **Database Name** that was previously created. Click **Test connection** button. After successful test, click **Save** button.



8. Go to **Service ports** tab. Following screen will appear:

The screenshot shows the 'SALTO Service Configurator' window with the 'Service ports' tab selected. The window has a title bar with standard Windows controls and an 'About' link. Below the title bar are four tabs: 'Service properties', 'Service ports', 'Database', and 'Advanced'. The 'Service ports' tab is active, displaying a 'SALTO Service Location' section and a 'Details for peripheral communication' section. In the 'SALTO Service Location' section, the 'Computer name' is 'WIN7SP1PC', with an unchecked 'Use full computer name' checkbox. The 'TCP/IP Port' is set to '8099' with a 'Verify' button. There is an unchecked checkbox for 'Enable TCP/IP ports for web application'. 'SALTO authentication' is set to '8100' and 'Reporting Port' is '8101', both with 'Verify' buttons. A URL 'http://WIN7SP1PC:8100/ProAccess/index.htm' is displayed. The 'Details for peripheral communication' section has two options: 'UDP Port range' (selected) with values '5000' and '10000', and 'UDP Port' (unselected) with an empty field. At the bottom are 'Save' and 'Close' buttons.

SALTO Service Configurator

Service properties Service ports Database Advanced

About

SALTO Service Location

Computer name: WIN7SP1PC

☐ Use full computer name

TCP/IP Port: 8099 Verify

☐ Enable TCP/IP ports for web application

SALTO authentication 8100 Verify

Reporting Port: 8101 Verify

http://WIN7SP1PC:8100/ProAccess/index.htm

Details for peripheral communication

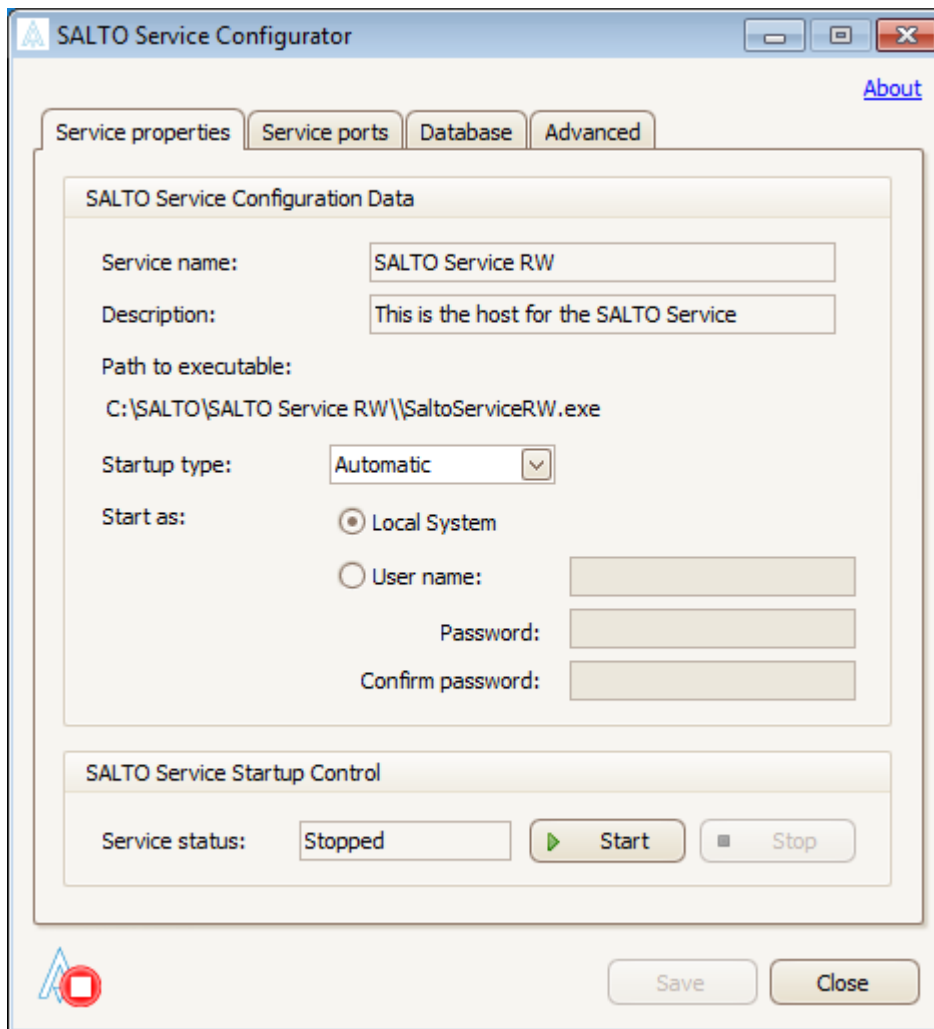
☒ UDP Port range: 5000 10000

☐ UDP Port:

Save Close

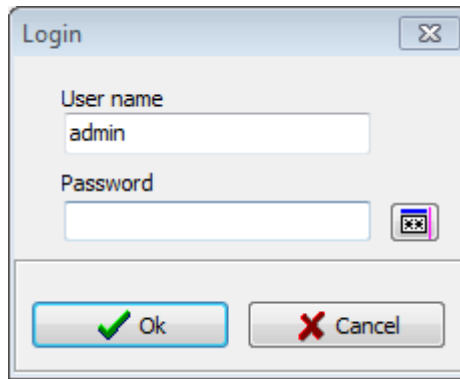
Verify the **computer name** is the one in which the service is installed. In this example, both the SQL Server and the service are residing on the same machine. Check the **TCP/IP port** number to make sure it is unique in your network. This is the port the Salto software needs to communicate to the database. It is NOT the port Millennium will use. Also verify the **UDP Port range** shown is usable. If necessary, choose a specific port.

9. Go to **Service properties** tab.

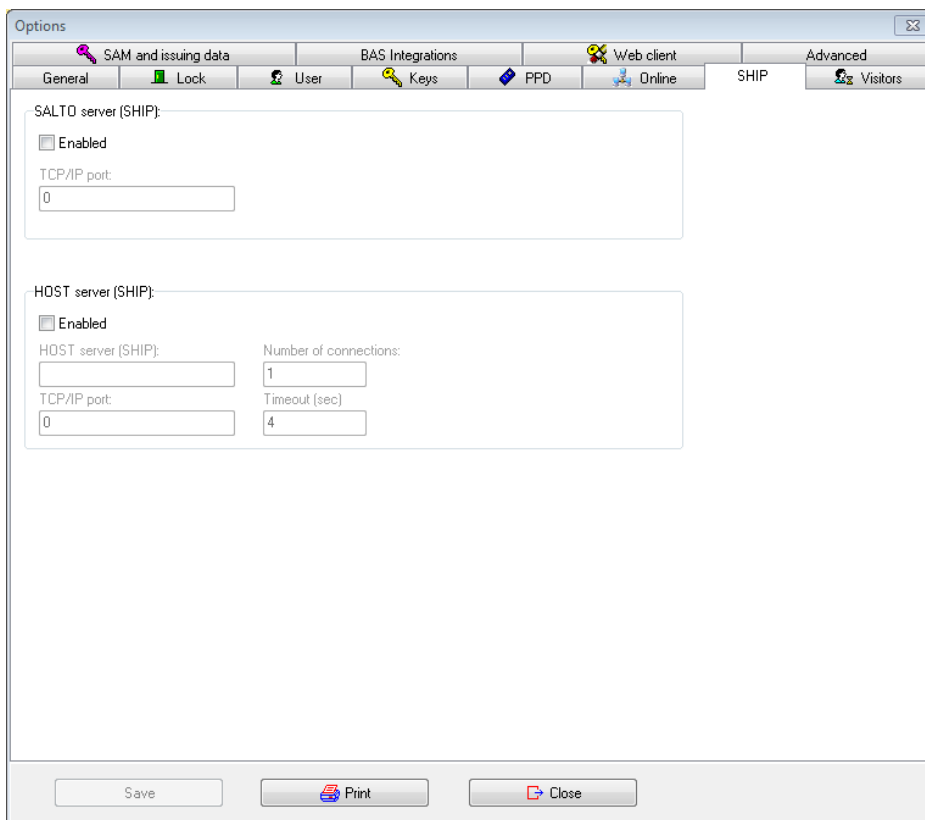


Verify the default settings. If the service needs to run under a different account than LocalSystem, enter it along with the relevant password information. Consult IT department if necessary. Make sure this account has network permissions. Do not start the services at this time. Exit the dialog by clicking **Save** and **Close** buttons.

10. Start the Salto GUI. Log into the Salto software by pressing **OK** at the prompt. A login can be created later. You can also register the Salto software at a later time.

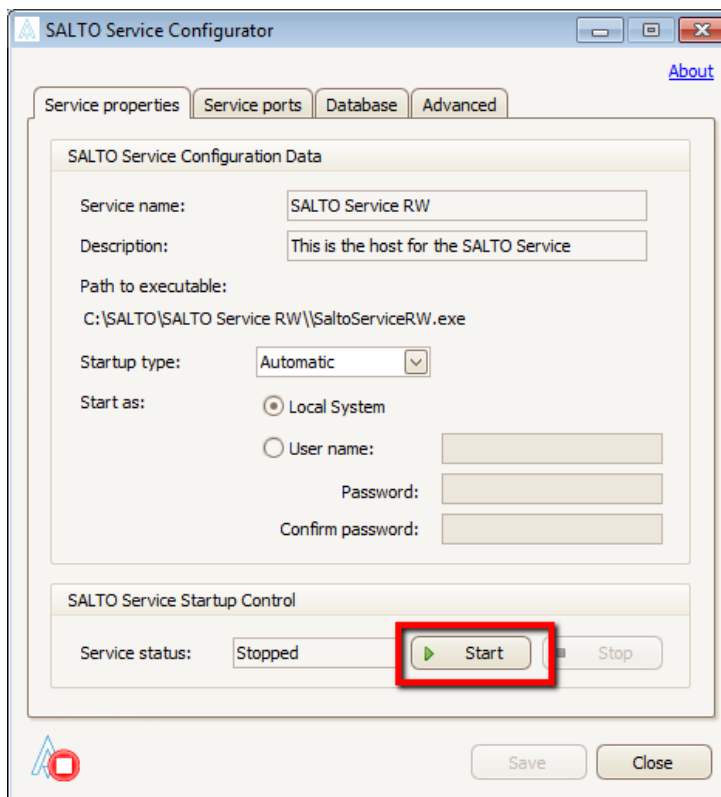


11. Go to **Tools -> Configuration -> General Options**. Switch to **SHIP** tab. Following screen should appear:

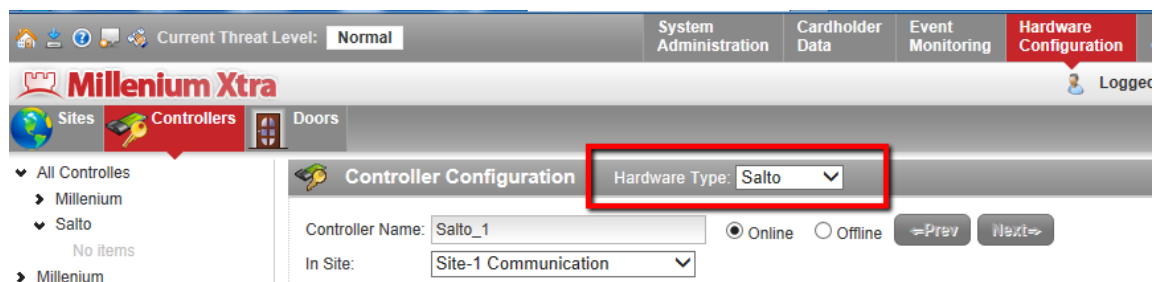


Click **Enabled** under the Salto Server portion. Enter **TCP/IP port** 8096 (or another free port in your network). Click **Enabled** under the **Host Server (SHIP)** portion. Enter the server name in the **HOST server (SHIP)** field and the same **TCP/IP port** number as previously. Click **Save**.

Then **start** (or restart) the Salto service from the **Salto Service RW Configurator** program. Ensure the service starts successfully.



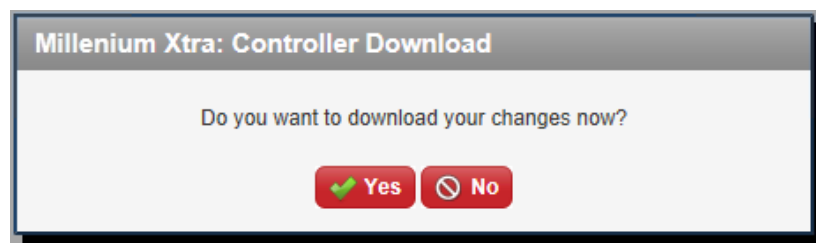
12. Log into Millennium Xtra with an **Operator** that has been assigned **Privilege Level 1**.
13. In Xtra, go to the **Hardware Configuration** screen. Make sure you have selected **Salto** Hardware Type.



14. Create new **Site** for Salto controller. Go to **Sites**, click **+ New** button, enter **Site Name** and click **Save** button to save changes.
15. Go to the **Controllers** screen and click **+ New** button to create a new Salto controller. Type **Controller Name**, select **Site** in which controller will be created. In Connection Mode portion enter **IP address** of computer where Salto software installed. In our example it is the same computer where Millennium Xtra installed so we can use localhost IP –


127.0.0.1. Enter the **TCP/IP port** number (8096) that was entered in Salto SHIP settings (see step 11). Click **Save** button to save changes.

16. Go to **Doors** screen. Click **New** button to create a new door. Enter **Door Name**, select **Controller** to which the door will be assigned. Click **Save** button to save changes. Switch to the **Event Monitor** screen. Click **Yes** when system prompts 'Do you want to download your changes now?'




17. Go to **RW Pro-Access for Salt GUI-> Doors** and verify that the door you have created in Millennium is available in Salto.







Door list

 1

Sort: Name

Search (Name):

Update	Name	Description	Battery	Battery status date
	Door1		?	

 New  View details  Delete  Print  Refresh  Close