

Millennium Expert/Enterprise/Xtra

Technical Bulletin

Title: Configuring Lantronix unit for use with Millennium Expert/Enterprise/Xtra

Contents: This document explains how to configure a new Lantronix, also referred to as a Site Ethernet Interface (SEI), unit for use with all Millennium products.

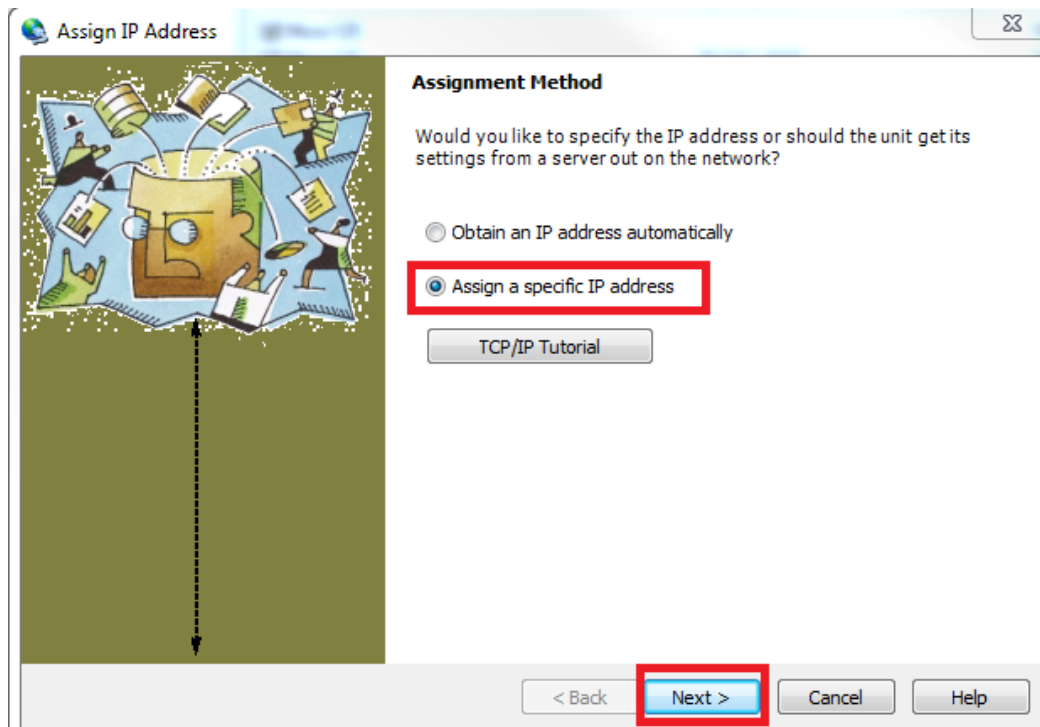
Procedure:

Assigning a Static IP Address to the Lantronix

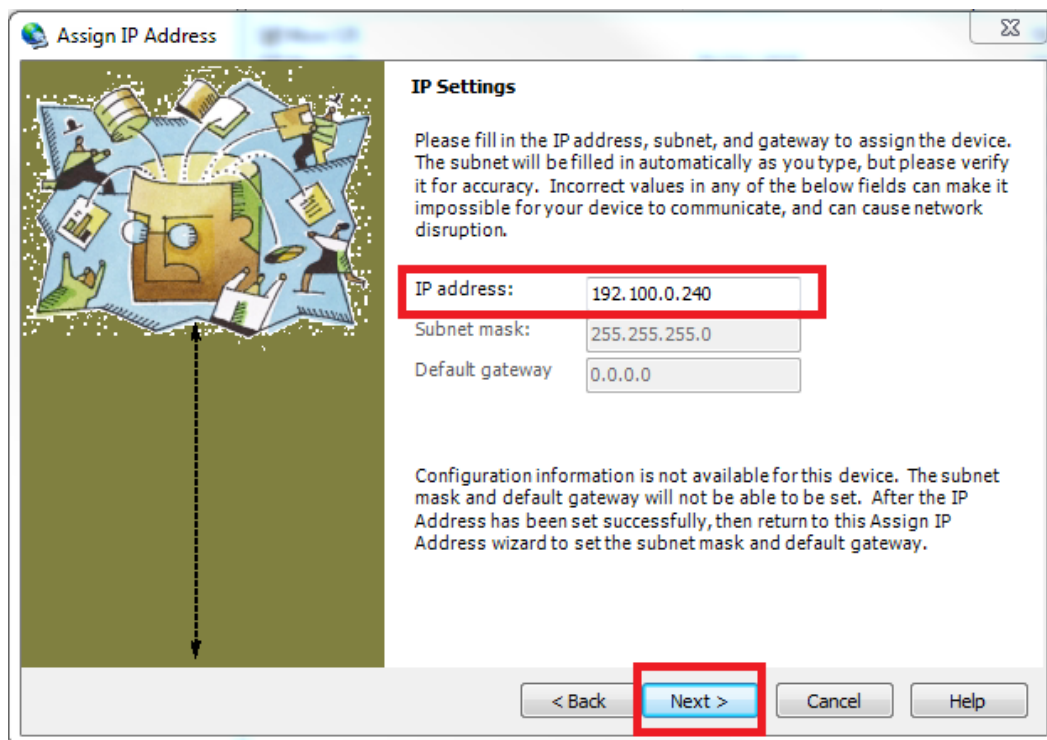
1. The Lantronix units come programmed with DHCP enabled out of the box. It is strongly recommended that you configure the Lantronix unit with a static IP address. In order to perform the initial configuration of the Lantronix unit, download the latest version of the Lantronix **DeviceInstaller** software from the Lantronix website:
<http://www.lantronix.com/support/downloads/>
2. Once **DeviceInstaller** is downloaded, install the software on any PC that is on the same network as the Lantronix device.
3. Launch the Lantronix **DeviceInstaller** program from the Start menu.
4. **DeviceInstaller** will scan the network for available Lantronix units, which will be displayed in the right pane.
5. In the right pane, locate the Lantronix unit that you wish to configure by its **Hardware Address** and select it. You can find the **Hardware Address** printed on the label on the back of the Lantronix unit:



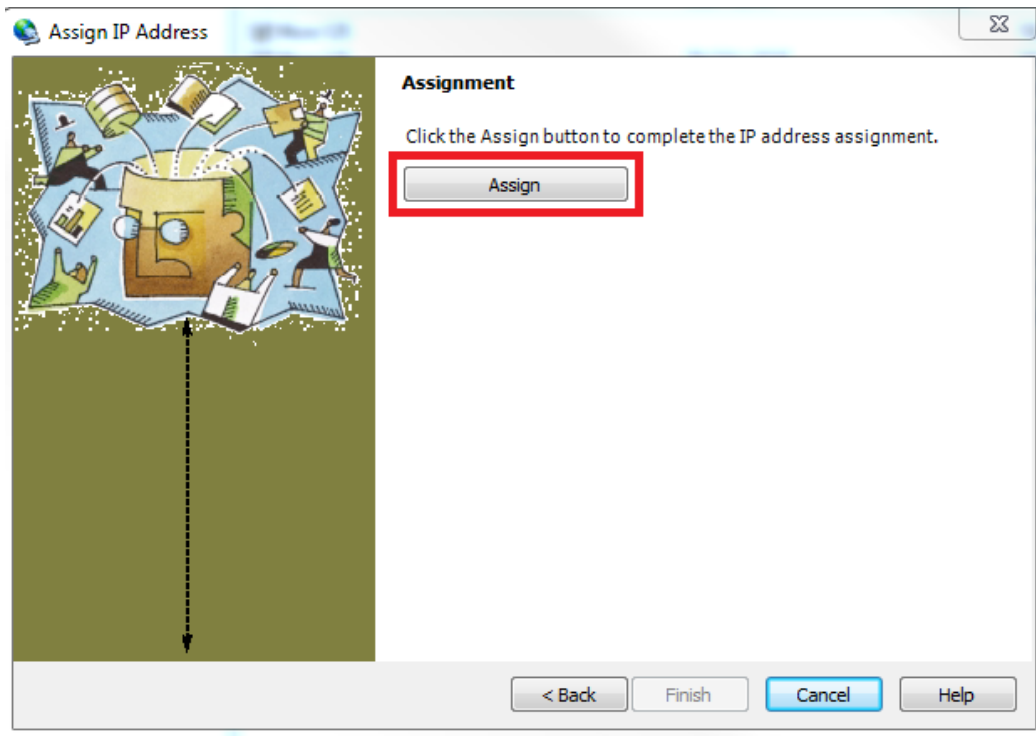
- From the **DeviceInstaller** menu, click **Assign IP**. Ensure that the radio button labelled **Assign a specific IP address** is selected. Click **Next**:



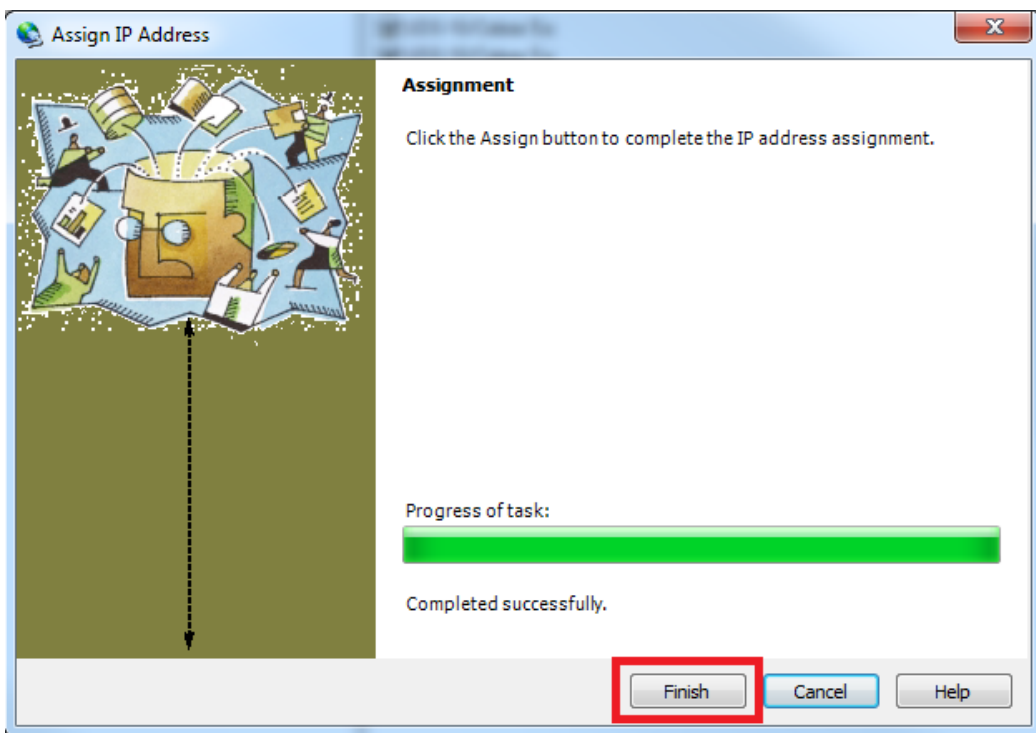
- Enter the **IP address** to be assigned to the Lantronix unit. Click **Next**.



8. Click the **Assign** button to assign the IP address to the Lantronix unit:



9. **DeviceInstaller** will send the new IP address configuration to the Lantronix unit. Once you receive a **Completed Successfully** message, click **Finish**:

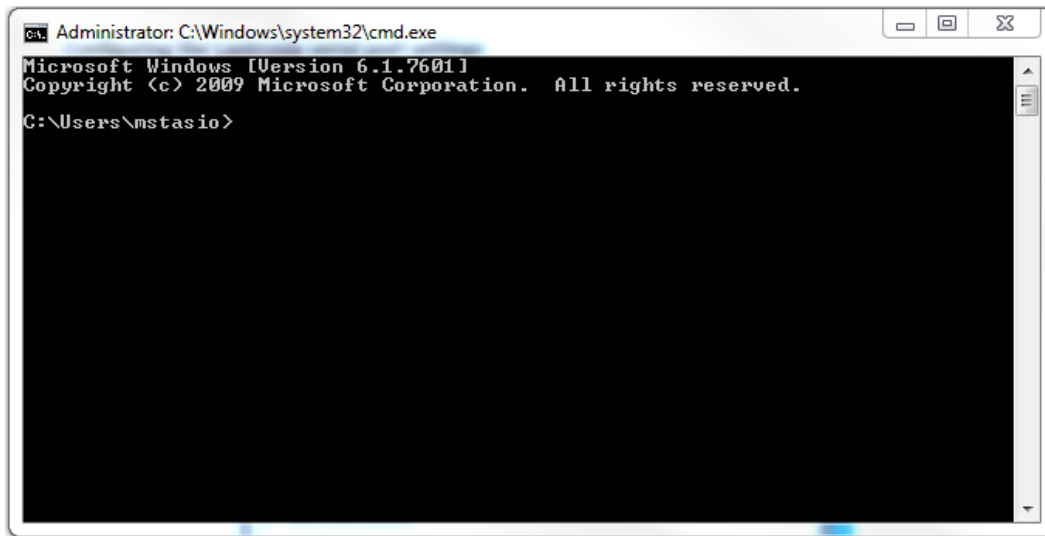


Configuring the Lantronix serial port settings

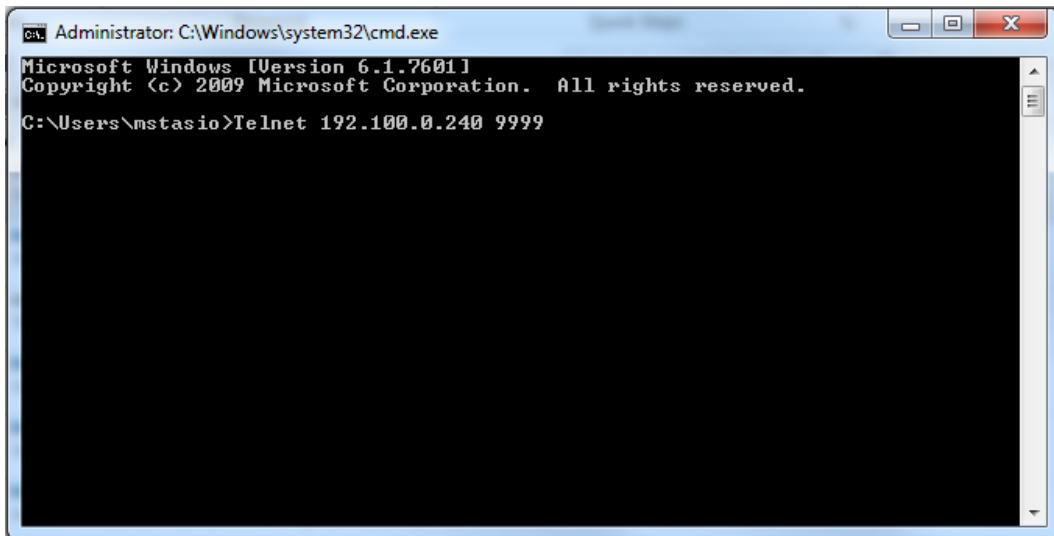
The remaining configuration is performed through the Telnet utility that is included with Windows.

Note In the newer versions of Windows, including Windows 7 and Windows Server 2008 R2, the Telnet program is not installed by default and has to be manually added to Windows. Refer to the last page of this document for steps to enable Telnet.

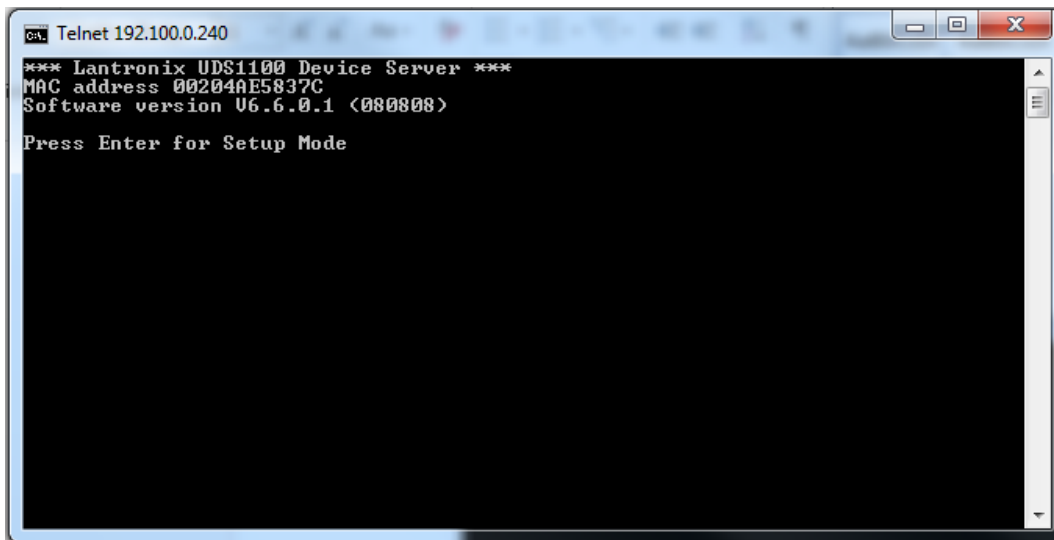
1. Click the Start button and type **CMD** in the search box. Press **Enter**. A command prompt will be displayed:



2. At the Command Prompt, type **telnet *LantronixIP* 9999** where *LantronixIP* is the IP address assigned to the Lantronix unit. Press **Enter**:

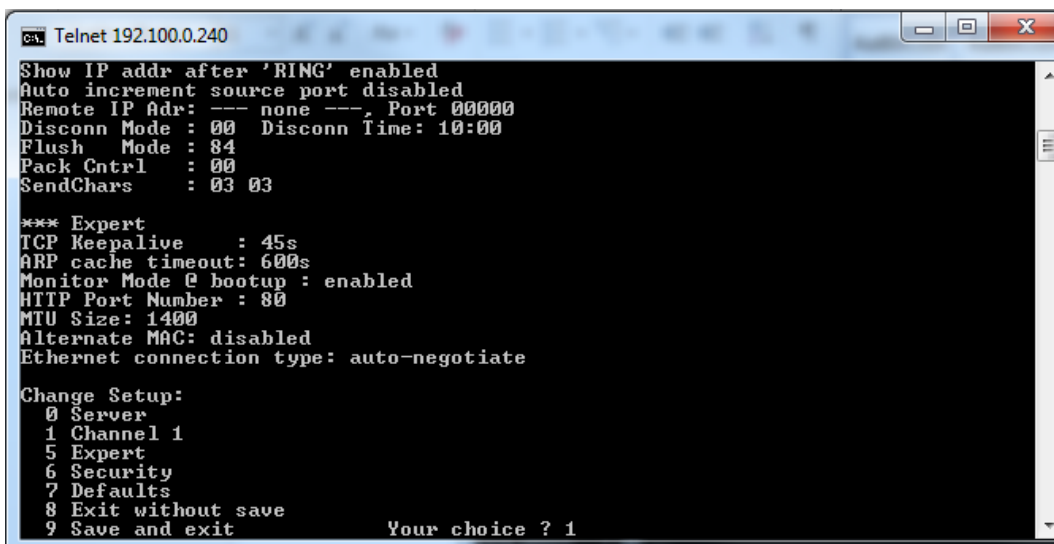


3. Press Enter to go into Setup Mode:



```
C:\ Telnet 192.100.0.240
*** Lantronix UDS1100 Device Server ***
MAC address 00204AE5837C
Software version U6.6.0.1 <080808>
Press Enter for Setup Mode
```

4. At the menu, type **1** and then press **Enter** to go to **Channel 1 configuration**:



```
C:\ Telnet 192.100.0.240
Show IP addr after 'RING' enabled
Auto increment source port disabled
Remote IP Addr: --- none ---, Port 00000
Disconn Mode : 00 Disconn Time: 10:00
Flush Mode : 84
Pack Cntrl : 00
SendChars : 03 03

*** Expert
TCP Keepalive : 45s
ARP cache timeout: 600s
Monitor Mode @ bootup : enabled
HTTP Port Number : 80
MTU Size: 1400
Alternate MAC: disabled
Ethernet connection type: auto-negotiate

Change Setup:
0 Server
1 Channel 1
5 Expert
6 Security
7 Defaults
8 Exit without save
9 Save and exit
Your choice ? 1
```

5. Configure the Lantronix settings as per the chart below:

<i>SEI (Lantronix UDS1100)</i>
Baudrate: 9600
I/F Mode: 4C
Flow: 00
LPort No: 02200
ConnectMode: D0
Remote IP: 0.0.0.0
Remote Port: 0
DisConnMode: 00
FlushMode: 84
DisConnTime: 10:00
SendChar 1: 03
SendChar 2: 03

6. After settings have been configured and the menu is displayed again, Type **9** to **Save and exit**:

```

c:\ Telnet 192.100.0.240
Baudrate <9600> ?
I/F Mode <4C> ?
Flow <00> ?
Port No <2200> ?
ConnectMode <D0> ?
Send '+++ in Modem Mode <Y> ?
Show IP addr after 'RING' <Y> ?
Auto increment source port <N> ?
Remote IP Address : <000> .<000> .<000> .<000>
Remote Port <0> ?
DisConnMode <00> ?
FlushMode <84> ?
Pack Cntrl <00> ?
DisConnTime <10:00> ? :
SendChar 1 <03> ?
SendChar 2 <03> ?

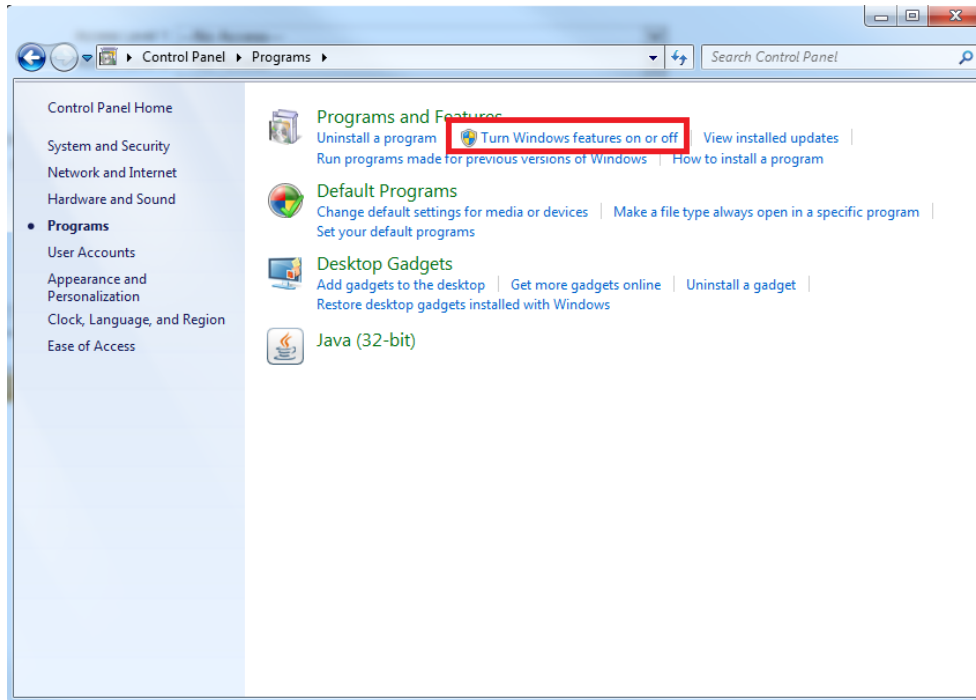
Change Setup:
0 Server
1 Channel 1
5 Expert
6 Security
7 Defaults
8 Exit without save
9 Save and exit      Your choice ? 9

```

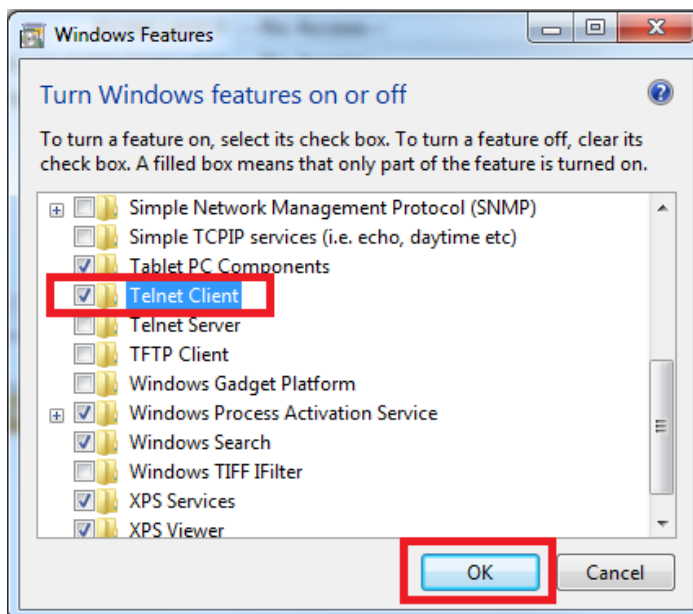
Enabling Telnet Client in Windows:

Windows 7:

1. From the Start menu, go to **Start > Control Panel > Programs**.
2. Under Programs and Features, click Turn Windows features on or off:

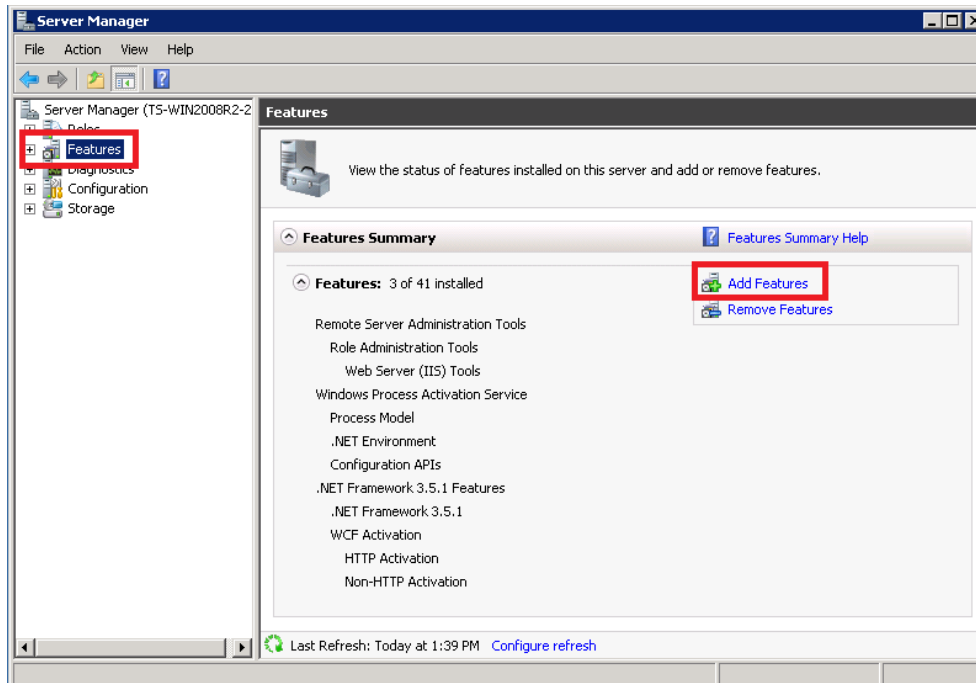


3. A **Windows Features** box will be displayed. Scroll down and locate **Telnet Client**. Ensure that the checkbox next to **Telnet Client** is selected and click **OK**:

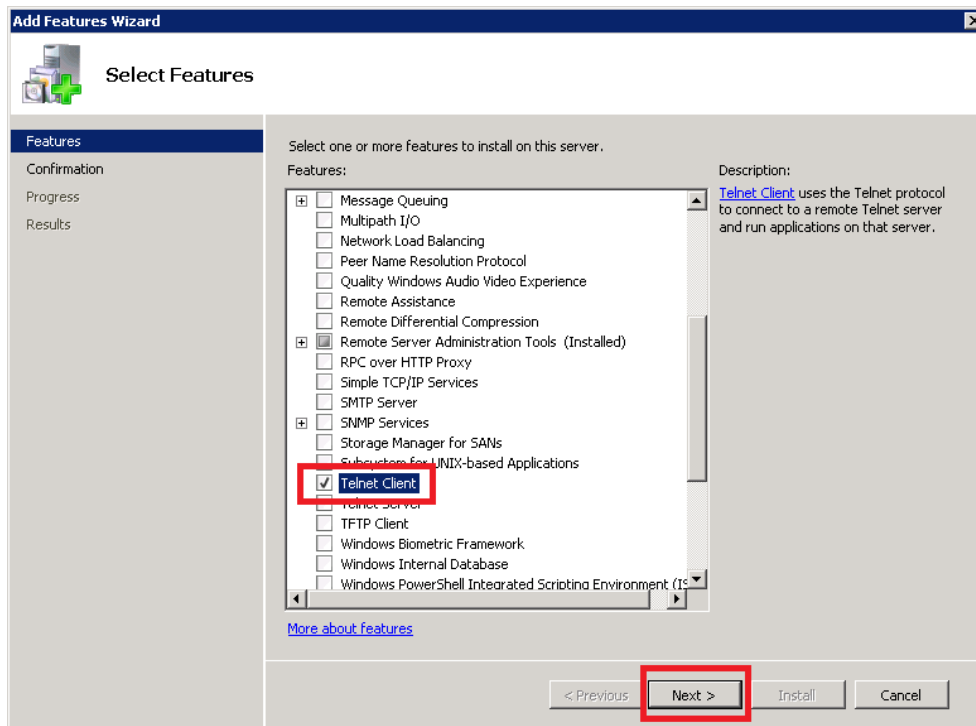


Windows 2008 R2:

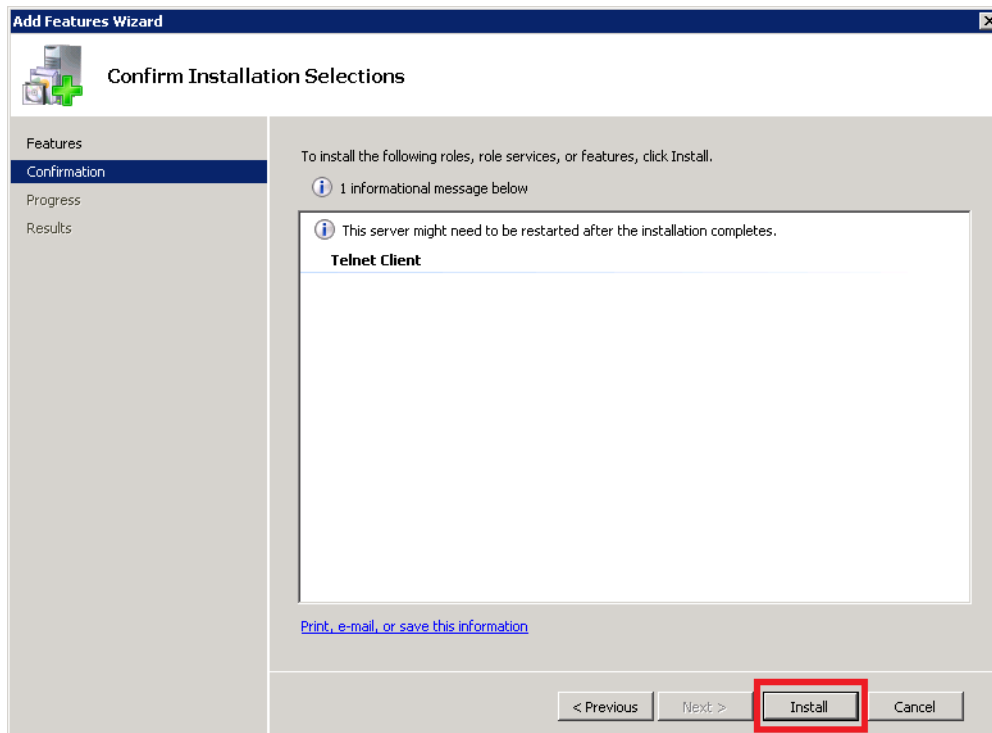
1. Click the **Start** button and then **right-click** on **Computer** and select **Manage**.
2. In the left pane, click **Features**. In the right pane, click **Add Features**:



3. The **Add Features Wizard** will be displayed. Scroll down the list and locate **Telnet Client**. Ensure that the checkbox next to **Telnet Client** is selected and click **Next**:



4. A **Confirmation** screen will be displayed. Click **Install** to install Telnet Client:



5. Windows will then install Telnet Client. When complete, click **Close**.