



Millennium Expert/Enterprise

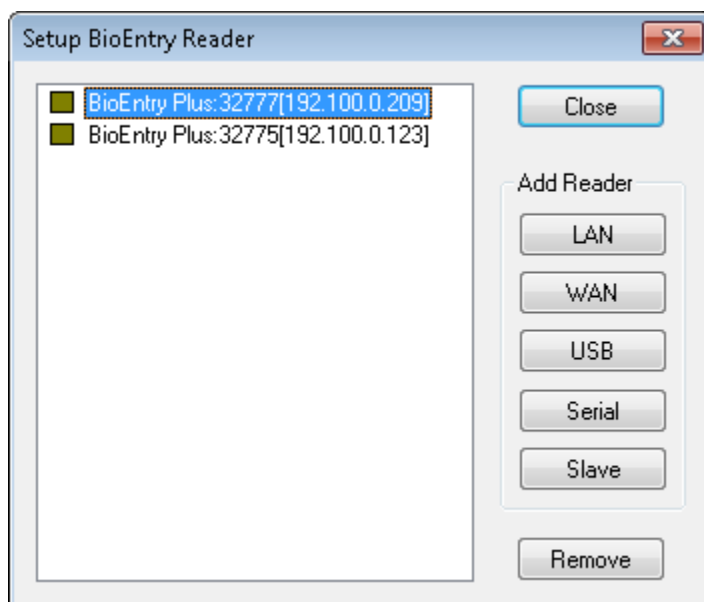
Technical Bulletin

Title: Configuring Suprema BioEntry reader integration with Millennium Expert/Enterprise

Contents: This document explains how to configure integration between Suprema BioEntry readers and Millennium Expert/Enterprise. ***Note*** Biometric integration is a licensed option that must be purchased and enabled in the software before it can be configured.

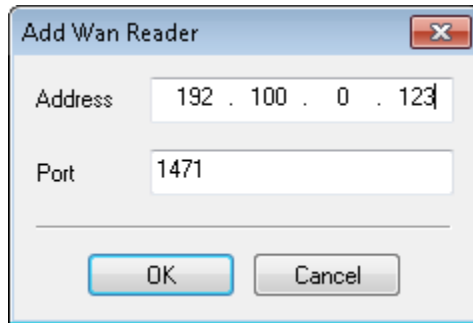
To setup **Suprema BioEntry** integration, follow these steps:

1. Launch the **Setup Millennium** program.
2. Login to **Setup Millennium** with an Operator that has **Level 1** privilege assigned.
3. From the menu, go to **Options > BioEntry Setup**:

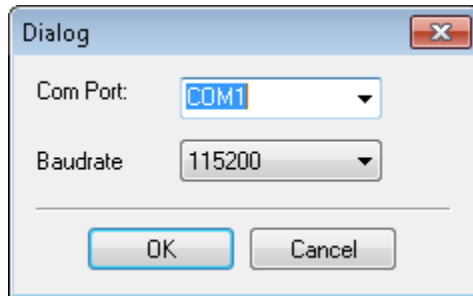


4. Configure reader using one of following options:

- LAN – Automatically searches for BioEntry readers connect to local network.
- WAN – You can manually enter reader's IP address and port.

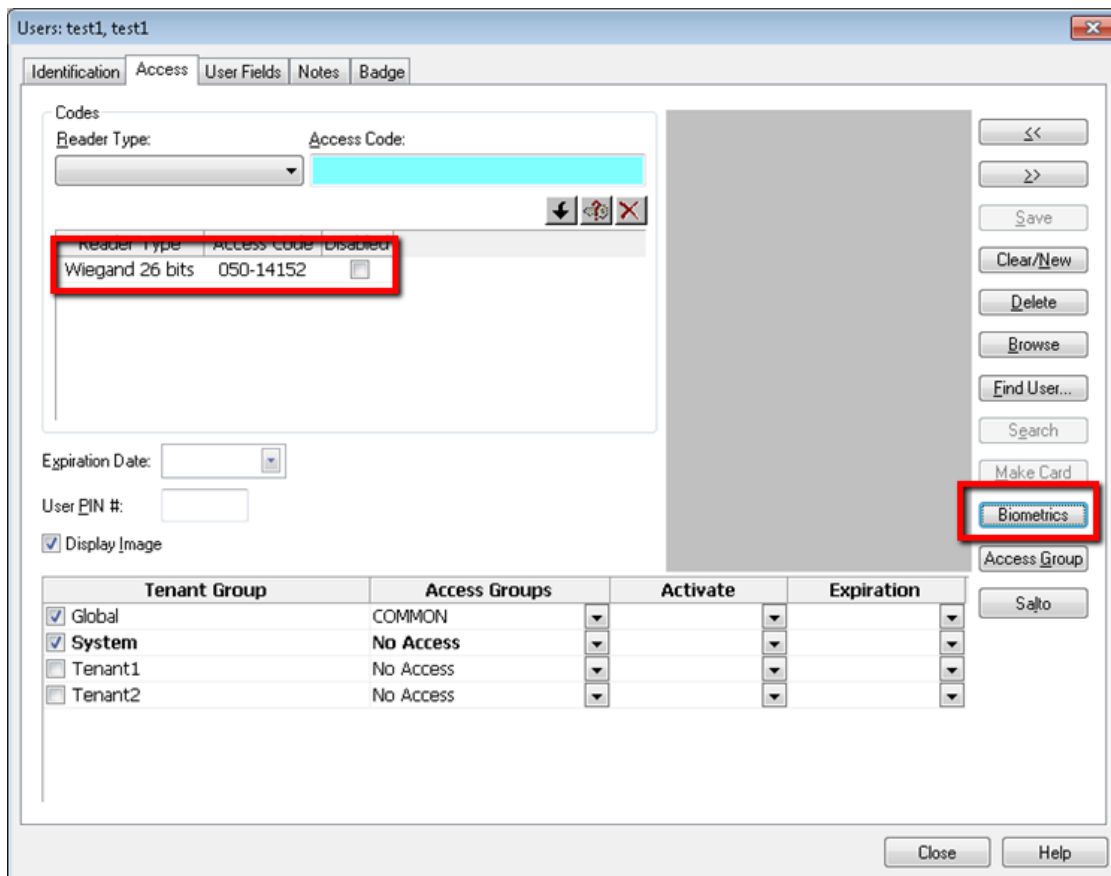


- USB – automatically searches for BioEntry reader connected to USB.
- Serial – Select port and Baudrate of reader connected to serial port.

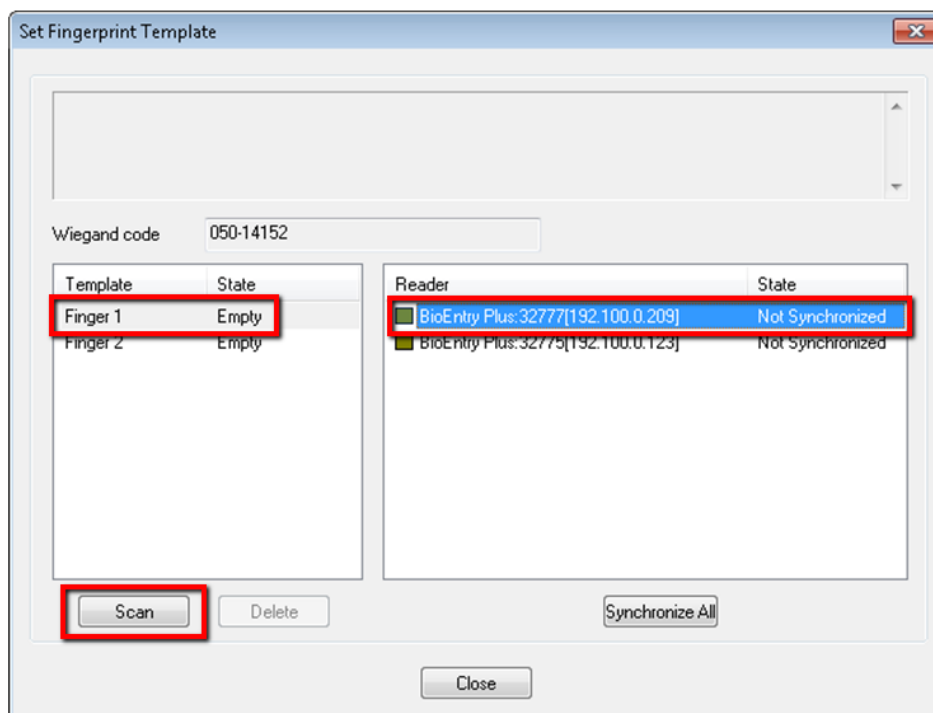


- Slave – Searches for slave reader connected to reader that is already in the system

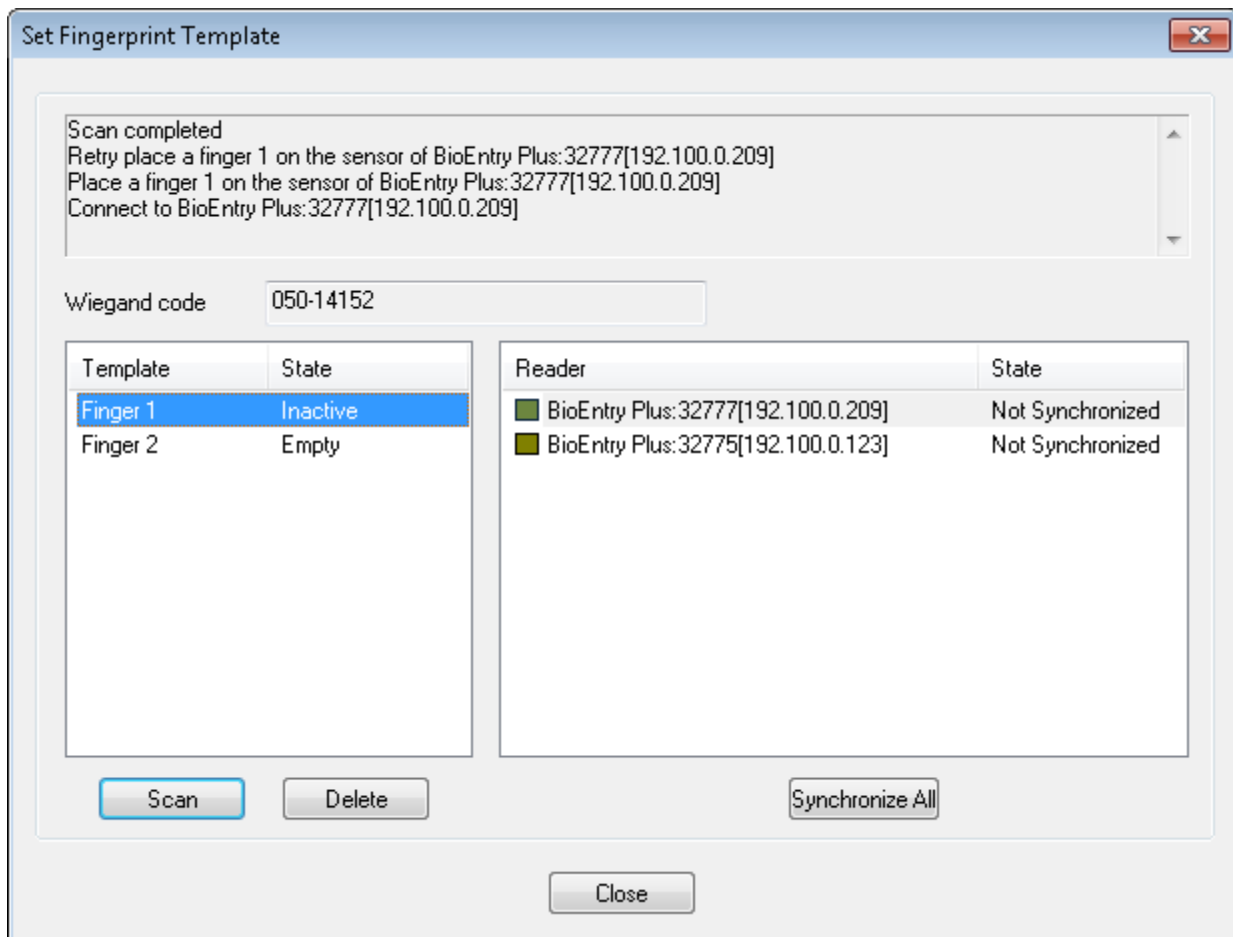
5. Launch Millennium Expert or Enterprise.
6. From the **Users** menu, create a new user or select an existing one.
7. Switch to the **Access** tab.
8. If the user does not have a Wiegand card assigned, add one to the user record.
9. Click on **Biometrics** button:



10. Select finger and reader and click **Scan** button. Scan fingerprint with reader's scanner.



After scan is complete you will get message:



Repeat scanning for all readers and fingers.

11. Press **Synchronize All** button to synchronize fingerprints with readers. When it is done, Finger 1 state will change to **Active** and reader state will change to **Synchronized**.