

**Title: How to Configure the Connection between Millennium Xtra and Datacard ID Works**

**Contents:** This technical bulletin explains how to configure the ODBC connections between Millennium Xtra and Datacard ID Works badging software.

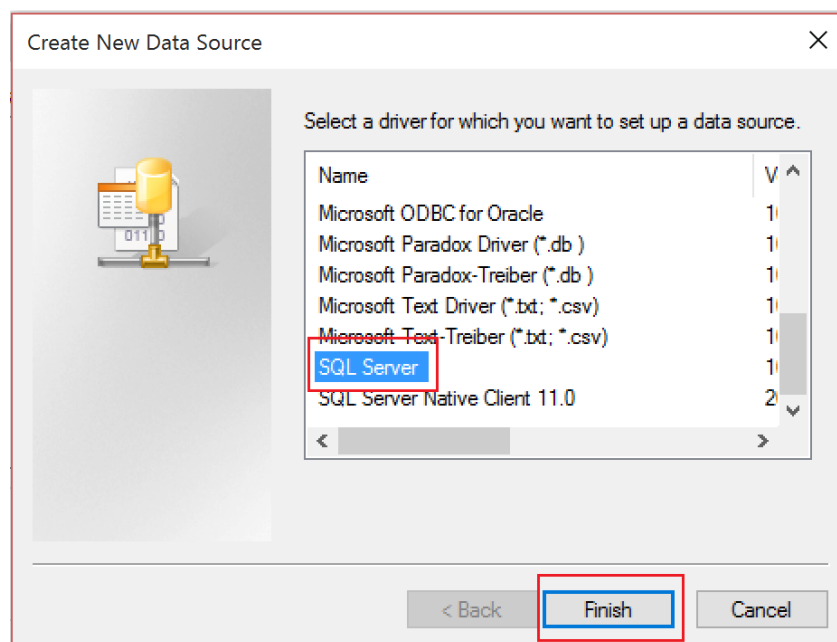
**Procedure:**

1. Install the Datacard ID Works software by following the installation wizard instructions. After installation, you will be instructed to reboot the computer.
2. Open the ODBC Control Panel applet:

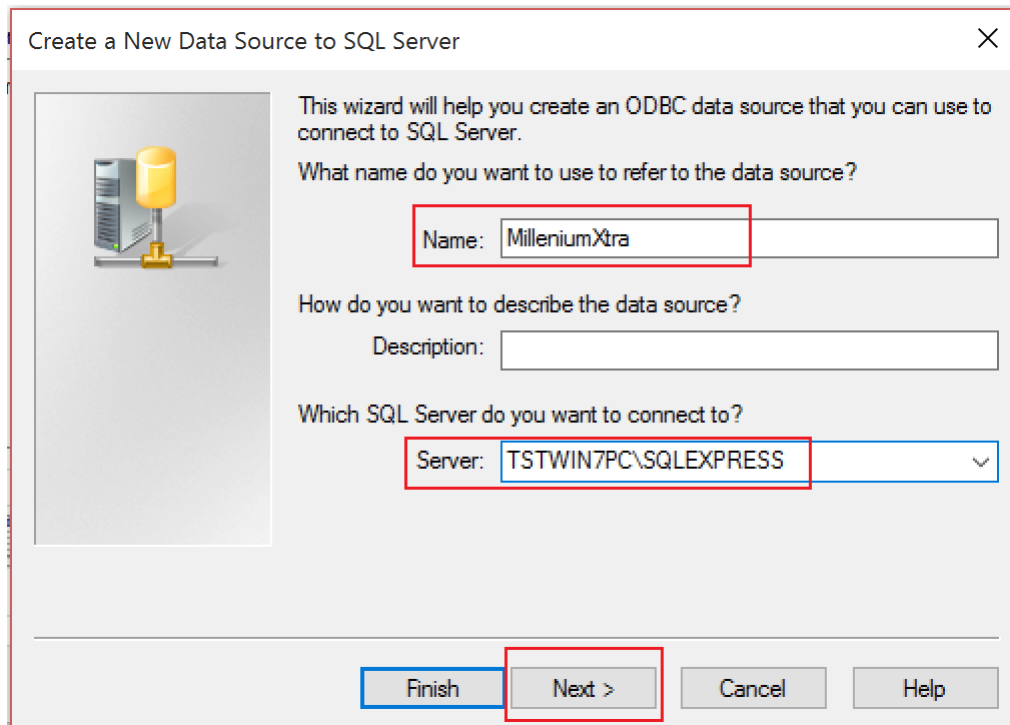
On 32-bit versions of Windows, go to **Start > Control Panel > Administrative Tools > Data Sources (ODBC)**

On 64-bit versions of Windows, open Windows Explorer and navigate to the folder **C:\Windows\SysWOW64** and double-click the file named **odbcad32.exe**

3. The **ODBC Data Source Administrator (32-bit)** will open. Click on the **System DSN** tab.
4. On the **System DSN** tab, click **Add**.
5. The **Create New Data Source** window will be displayed. Select **SQL Server** from the list and click **Finish**.



6. In the **Name** field, enter '**MilleniumXtra**'. In the **Server** field, enter the **connection string** (Servername\Instancename) of the server where the Millennium Xtra databases are installed. Click **Next**.



Create a New Data Source to SQL Server

This wizard will help you create an ODBC data source that you can use to connect to SQL Server.

What name do you want to use to refer to the data source?

Name:

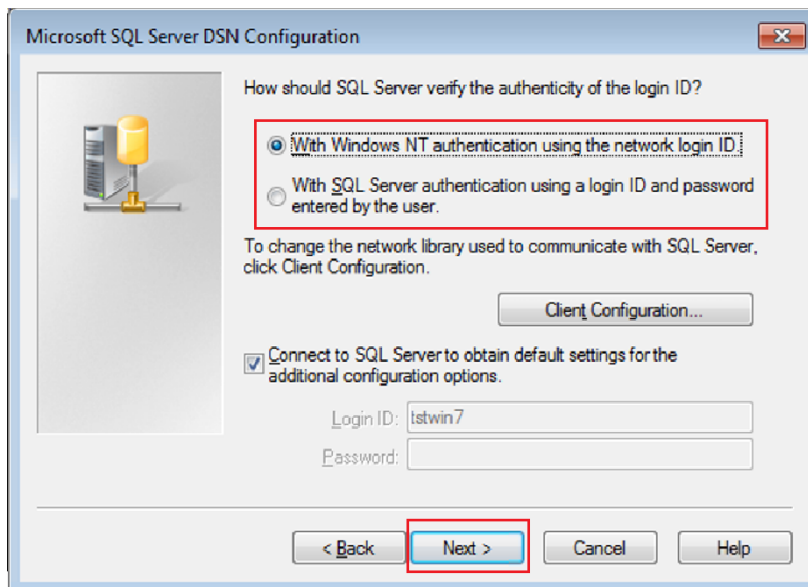
How do you want to describe the data source?

Description:

Which SQL Server do you want to connect to?

Server:

7. On the next screen, enter the authentication parameters. Choose **Windows NT Authentication** or **SQL Server Authentication** depending on how SQL Server was initially configured on the Millennium Xtra server. Click **Next**.



Microsoft SQL Server DSN Configuration

How should SQL Server verify the authenticity of the login ID?

☒ With Windows NT authentication using the network login ID.

☐ With SQL Server authentication using a login ID and password entered by the user.

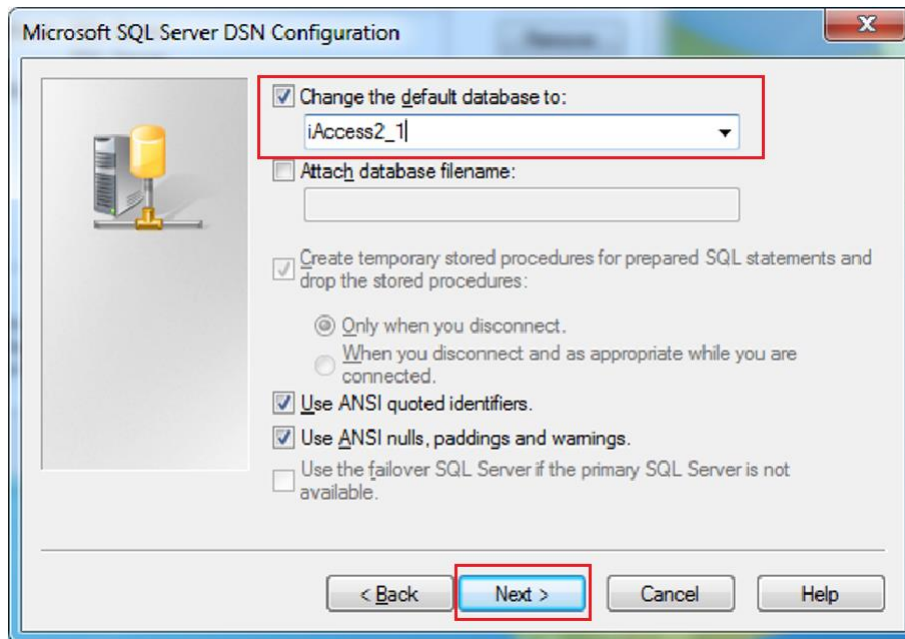
To change the network library used to communicate with SQL Server, click Client Configuration.

☒ Connect to SQL Server to obtain default settings for the additional configuration options.

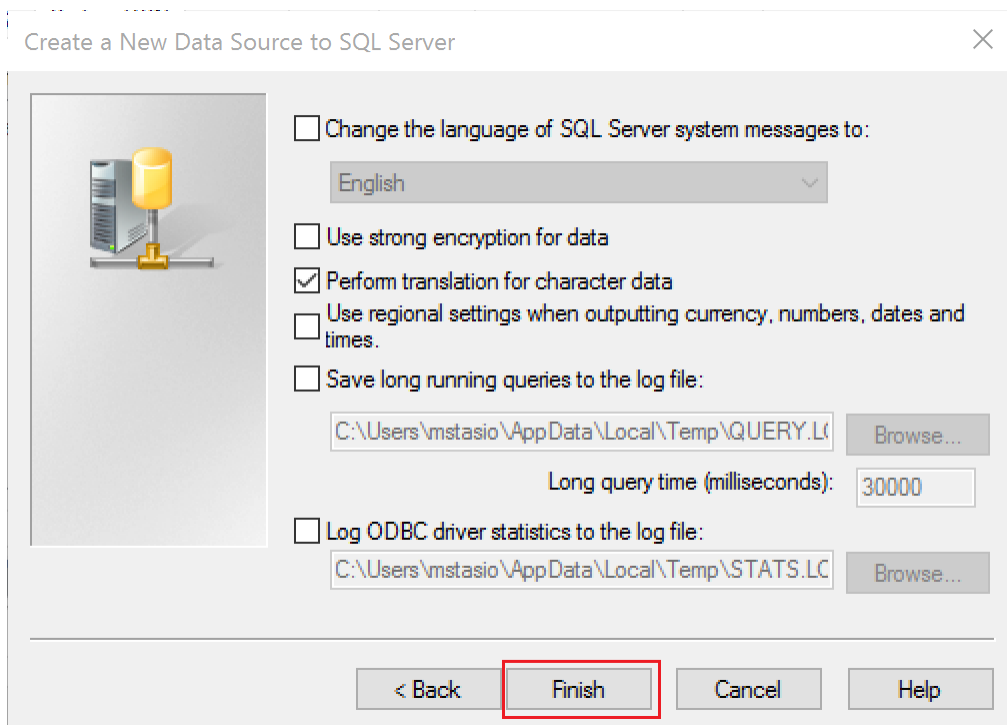
Login ID:

Password:

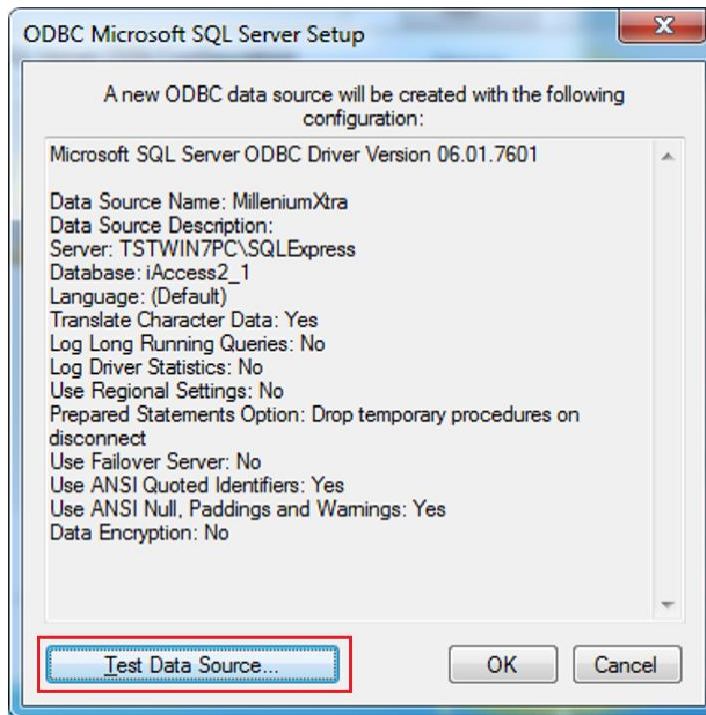
8. Check the checkbox labelled **Change the default database to:**. Select **iAccess2\_1** from the dropdown list. Click **Next**.



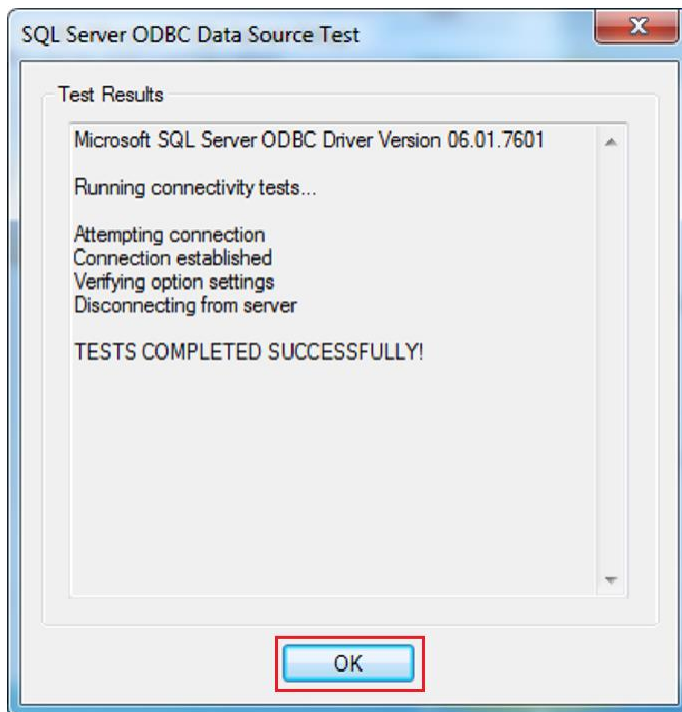
9. Click **Finish**.



10. Click **Test Data Source**.



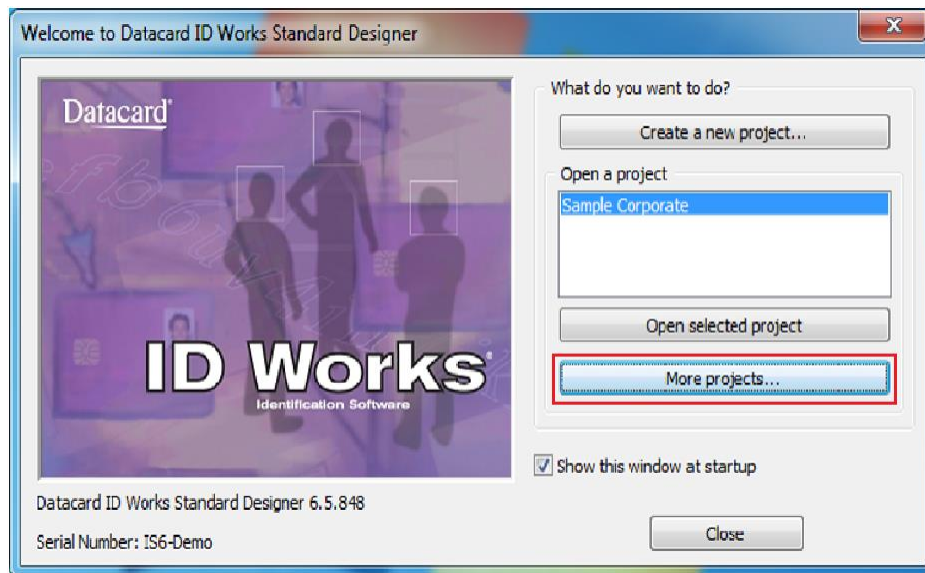
11. The connection to SQL Server will be tested. Verify that the test completed successfully and click **OK**.



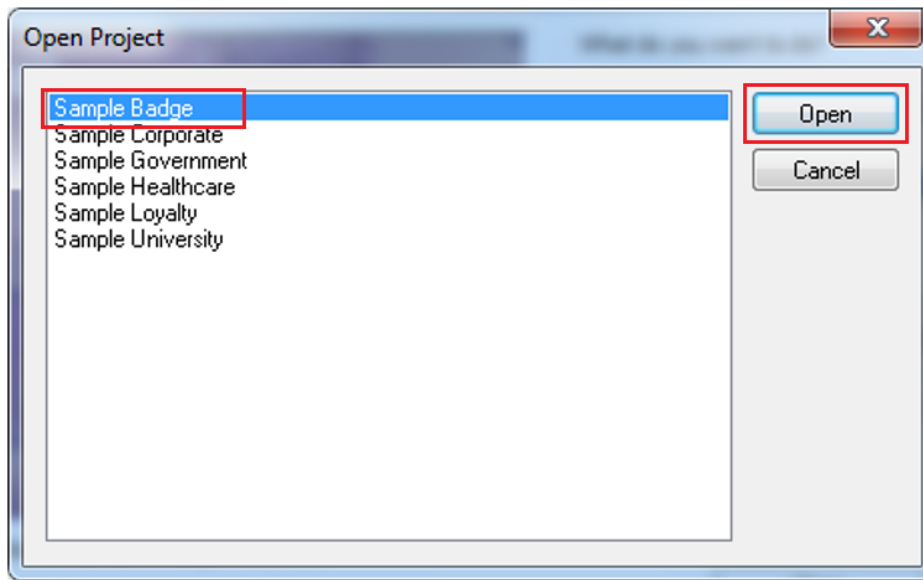
12. Launch the Datacard ID Works Designer application and login to the software. The default login is admin/admin.



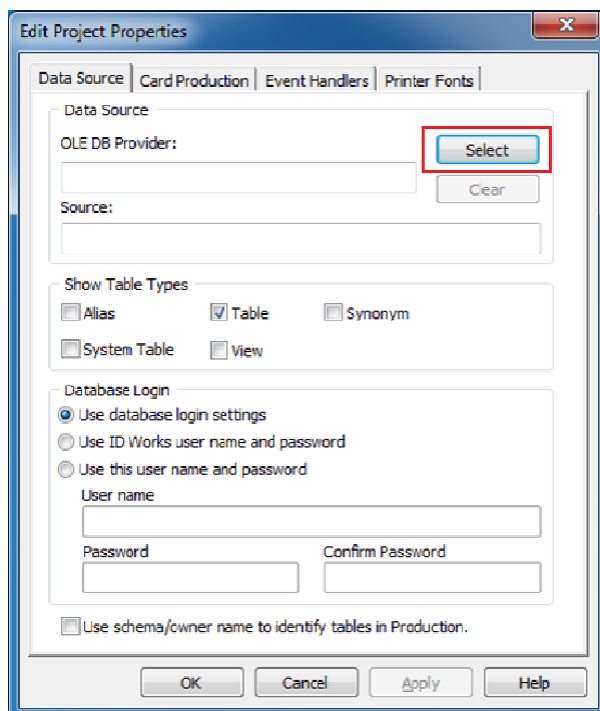
13. Open template project by clicking on **More projects...**



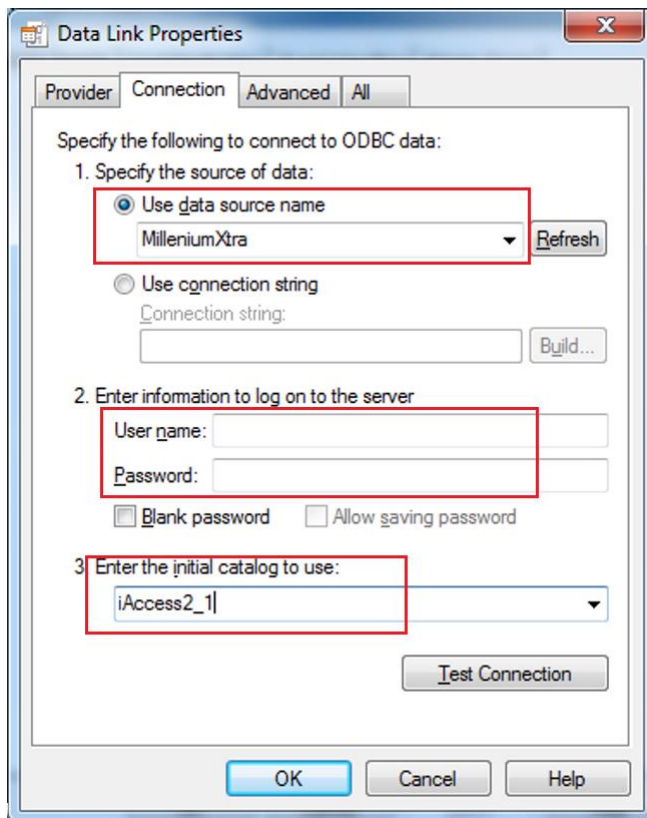
14. Select project **Sample Badge** and click **Open**.



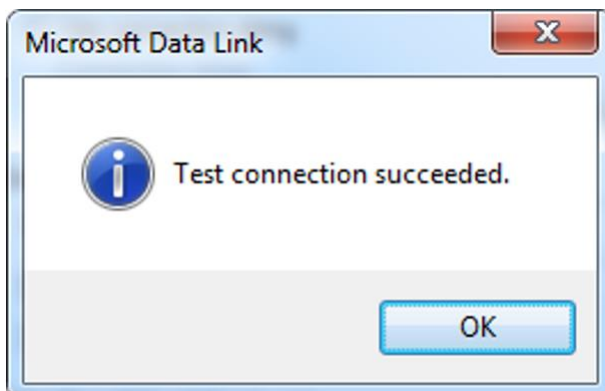
15. From the menu, select **File > Project Properties**. The **Edit Project Properties** screen will be displayed. Under the **Data Source** section, click the **Select** button.



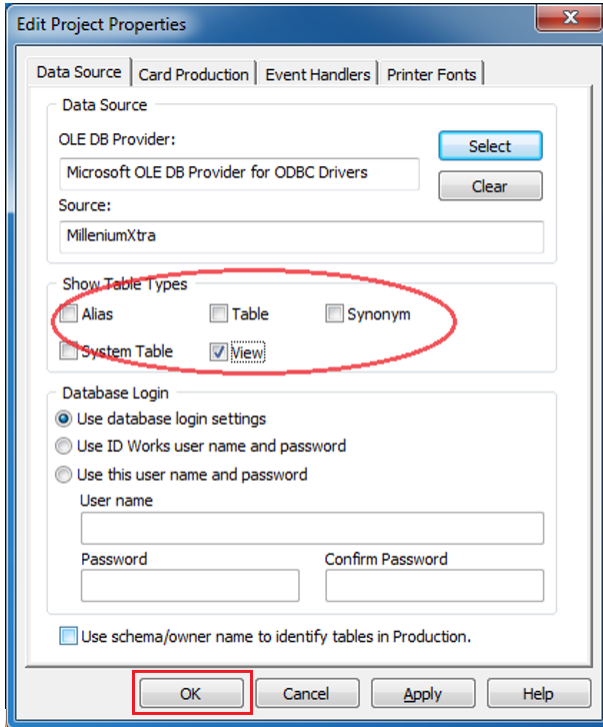
16. The **Data Link Properties** screen will be displayed. Click on the **Connection** tab. Choose **Use data source name** and select the **MilleniumXtra** data source that was created earlier in this procedure. If you are using **SQL Server Authentication**, enter the **User name** and **Password**, otherwise leave blank if you are using Windows Authentication. From the **initial catalog** dropdown list, select **iAccess2\_1**.



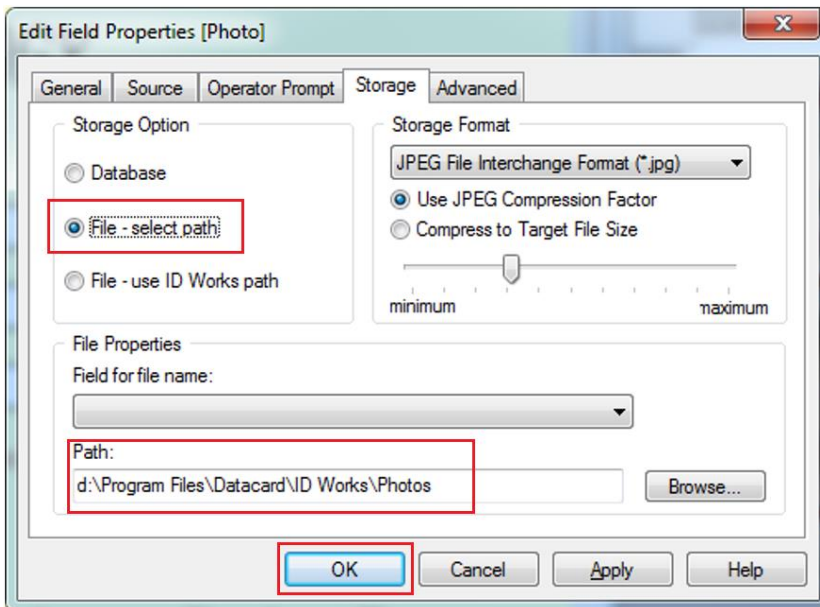
17. Click the Test Connection button to verify that the connection is correctly configured. A message indicating that the connection was successful should be displayed.



18. Click **OK** on the **Test connection succeeded** message and then click **OK** again on the **Data Link Properties** screen.
19. On the **Edit Project Properties** screen, under the **Show Table Types** section, uncheck **Table** and check the **View** checkbox.

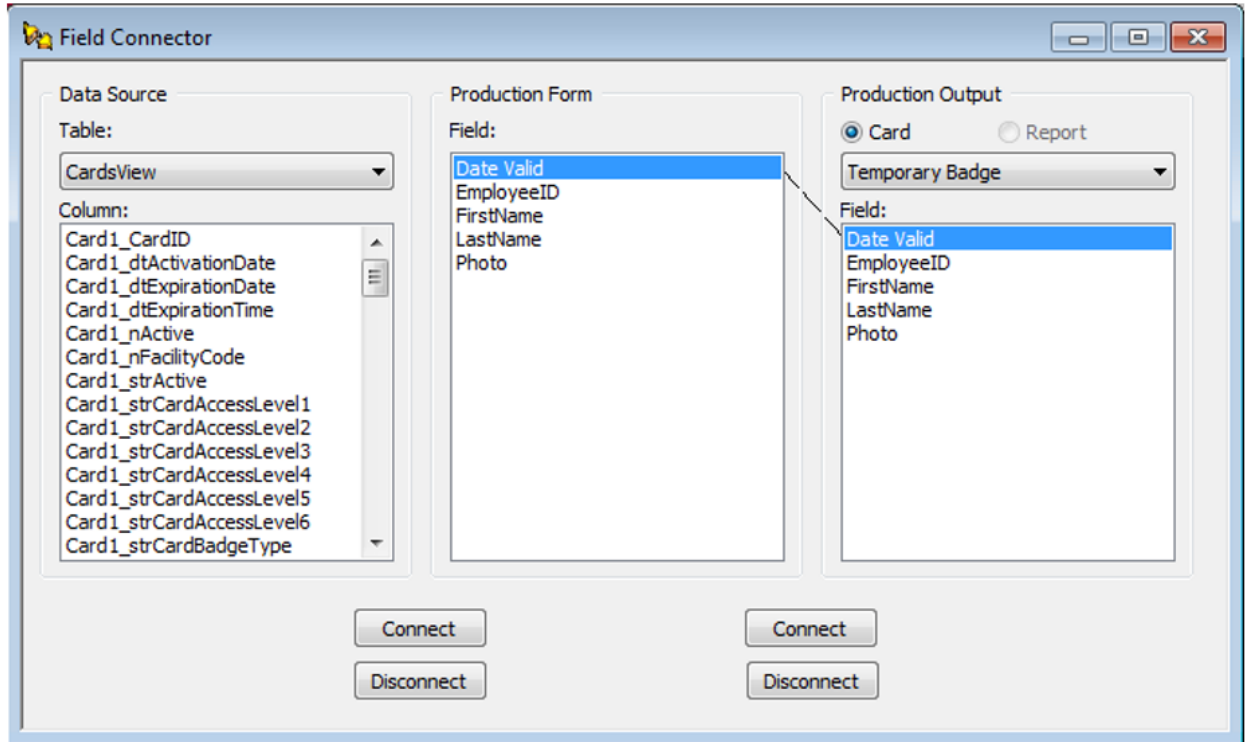


20. Double-click on **Photo**. On the **Edit Field Properties [Photo]** screen, click on the **Storage** tab. Under **Storage Option**, select **File – select path**. In the **Path:** box, enter the path to the folder where the employee photos are stored.





21. From the menu, select **View > Field Connector**. In the Data Source section, select **CardView** from the **Table** dropdown list. To connect the fields, select the field in the **Production Form** section and select appropriate field in the **Data Source** section. Click the left **Connect** button to connect these fields.



Refer to the table below to connect the fields:

| Data Source Field | Production Form Field |
|-------------------|-----------------------|
|                   | Date Valid            |
| strEmployeeID     | EmployeeID            |
| strFirstName      | FirstName             |
| strLastName       | LastName              |
| strImagePubName   | Photo                 |

22. Save the project as a new project.
23. From the Start Menu, launch the ID Works Production software and open the project that you saved in the previous step.
24. Create a cardholder by entering data in the Employee ID, First Name, Last Name and Date Valid fields. Click on the photo field and select the image that will be used as the cardholder photo. Click Save button to save the cardholder record.

**MACH TECHNOLOGY**

Click on Field to Retrieve Photo

**Employee ID**  
18

**First Name** Richard

**Last Name** Rosen

03/11/2013 06 Date Valid (System Assigned)

**Temporary Employee Badge Form**

Preview: front

**MACH TECHNOLOGY**

Richard  
Rosen

03/11/2013

18

Save the current data NUM Evaluation Mode

25. Login to Millennium Xtra and verify that the Cardholder created in Datacard ID Works was imported successfully into the Xtra database.