

**Title: Manually Installing SQL Server**

**Contents:** This document explains how to manually install Microsoft SQL server 2014 for use with Millennium Expert, Enterprise, Xtra, and Ultra. SQL server is the common application that all the products use to run their databases, and it is required to be installed before any of the Millennium software can be installed.

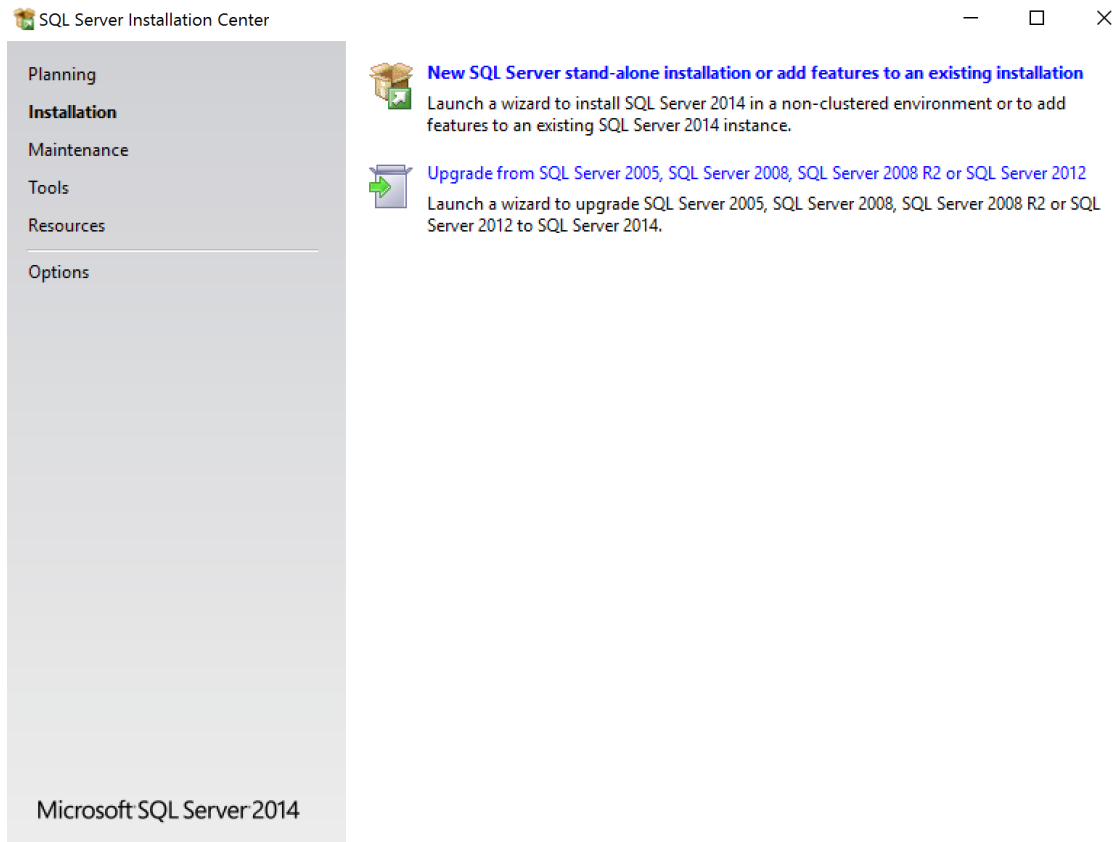
**Procedure:**

1. Browse to the **SQL** folder in the installation disc and run the **setup.exe** file:

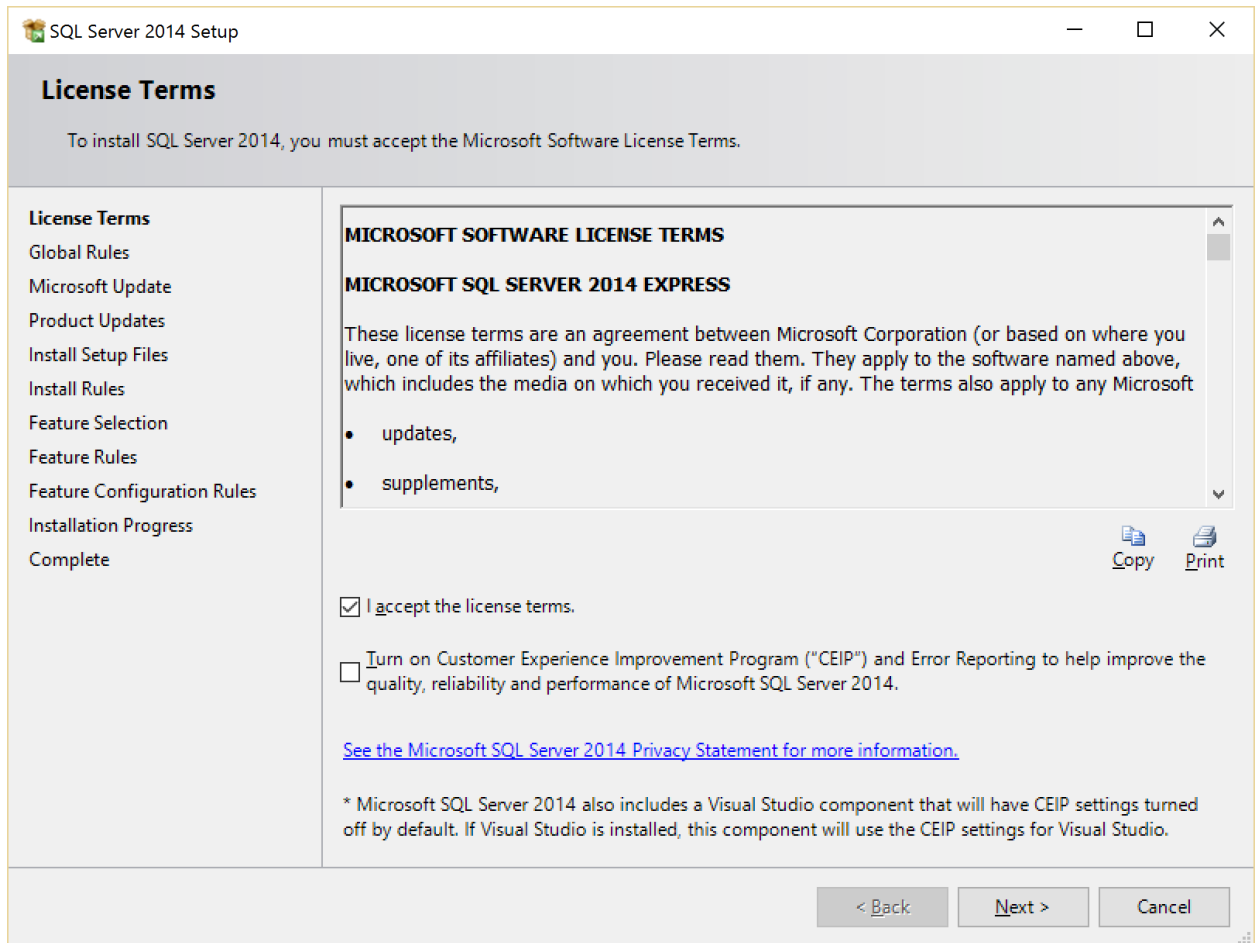
This PC > Data (D:) > Files > Millennium Software > MPW Ultra > Installation > sql

<input type="checkbox"/> Name	Date modified	Type
1033_ENU_LP	8/15/2015 8:42 AM	File folder
redist	8/15/2015 8:49 AM	File folder
resources	8/15/2015 8:49 AM	File folder
x86	8/15/2015 8:56 AM	File folder
AUTORUN	2/5/2014 11:00 PM	Setup Information
MEDIAINFO	2/20/2014 11:00 PM	XML Document
Packageld.dat	11/5/2014 11:00 PM	DAT File
<input checked="" type="checkbox"/> SETUP	2/19/2014 11:00 PM	Application
SETUP.EXE.CONFIG	1/15/2014 11:00 PM	CONFIG File
SQLSETUPBOOTSTRAPPER.DLL	2/19/2014 11:00 PM	Application extension
SQMAPI.DLL	2/19/2014 11:00 PM	Application extension

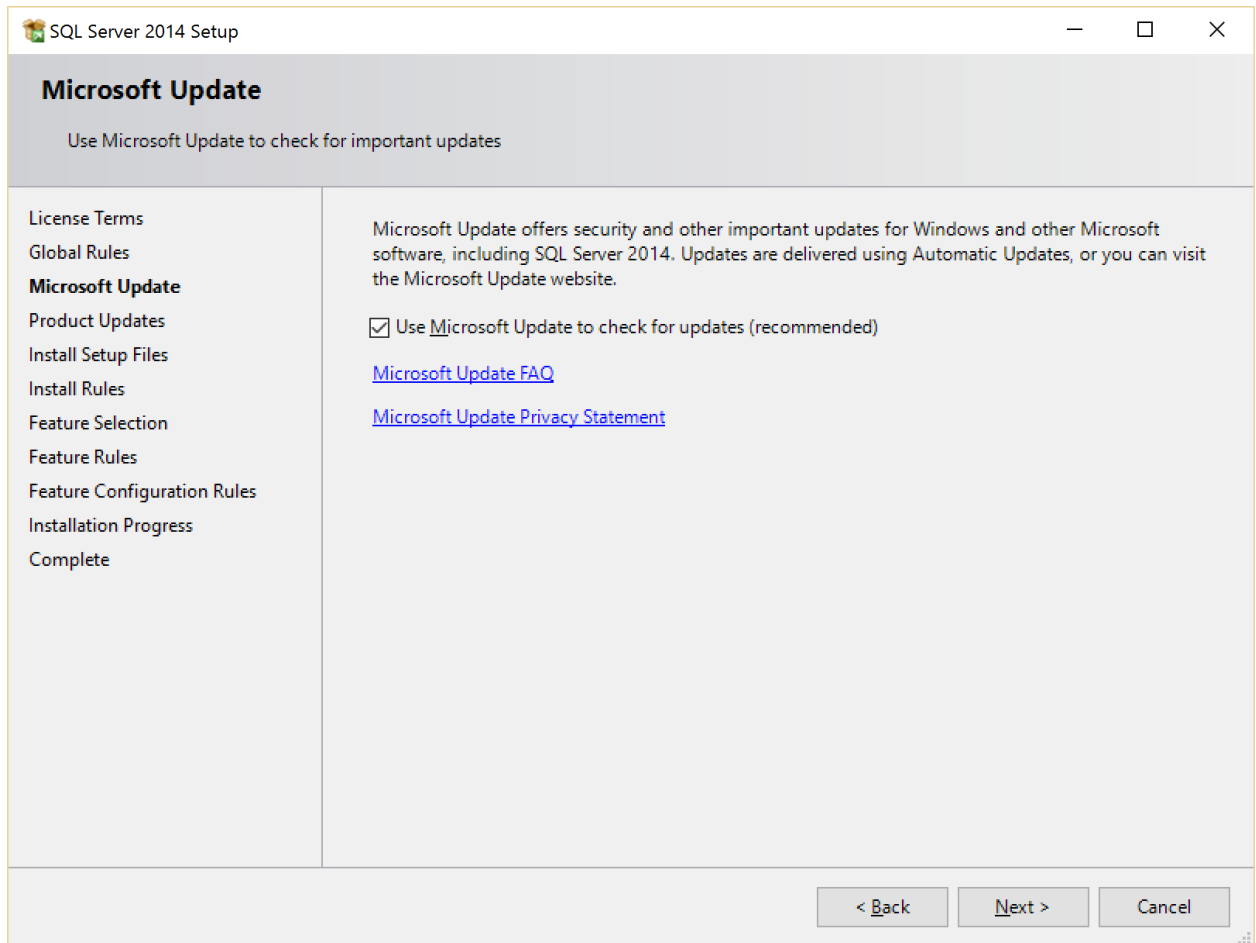
2. If this is a new computer, you want to select the **New SQL Server stand-alone installation** option that is highlighted below. If the computer already has an older version of SQL server installed, but it is not used for anything else, then you can select the Upgrade from SQL Server option and the installer will go through the upgrade process for SQL. NOTE: For upgrading an existing SQL instance, please see the guide on upgrading a SQL Instance. This document will only focus on the new SQL Instance Installation



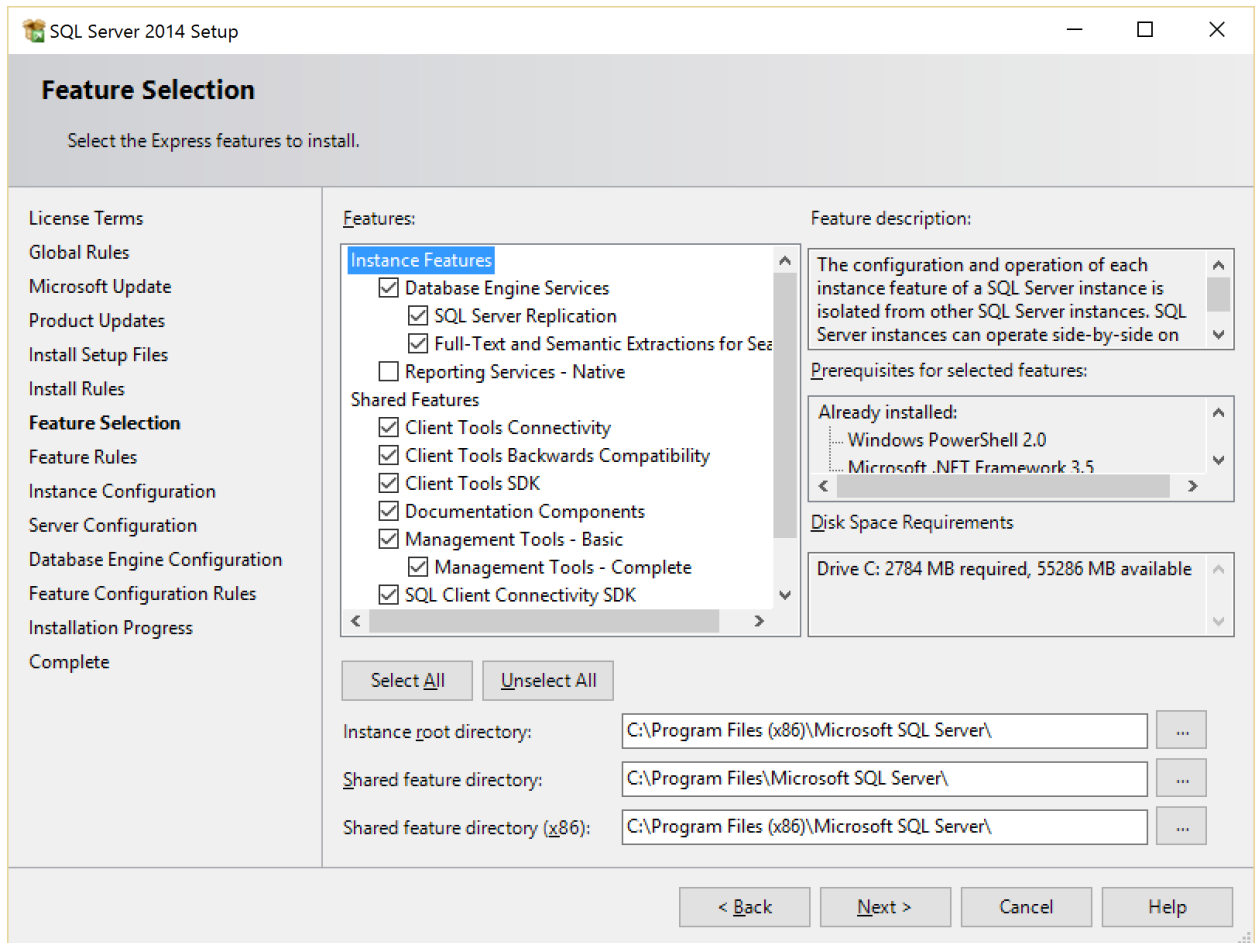
3. You must select the checkbox stating that you accept the License Terms from Microsoft. If you wish to review the License Terms, you can use the provided buttons to copy them to the clipboard to paste them into Microsoft Word or Notepad, or you can select Print to print the License Terms for review.



4. The installation will then perform a quick rule check to verify that your computer has everything already installed that the SQL Server needs, as well as your computer does not have any pending reboots for updates. If you have a pending reboot for an update, then the installer will not allow you to continue until you perform the update and restart the computer. If all the rule checks pass, you will be able to move on to the next step.
5. Then next step is to tell the system if you wish to allow Microsoft Update to check for updates to the installation before you begin. This is an optional step, however it is recommended that you allow the software to download any updates before you start as there are updates that have been released to patch security and performance issues that were found with the software.



6. Once the updated files are downloaded, you will be able to move on to the next step.
7. The next step is the Feature Selection; this is the step where we select the features of the SQL database instance. The screen below shows the features that should be selected to allow Millennium Access Control Applications to function correctly.



8. This is also the screen where you can select what drives SQL will be installed on, and where it will set the default database locations.
9. The next step is to configure the SQL database Instance Name. You can leave this as the default, however just make a note of what it is as when you go to perform the software installation, it will ask you for the SQL instance.

SQL Server 2014 Setup

### Instance Configuration

Specify the name and instance ID for the instance of SQL Server. Instance ID becomes part of the installation path.

License Terms

Global Rules

Microsoft Update

Product Updates

Install Setup Files

Install Rules

Feature Selection

Feature Rules

**Instance Configuration**

Server Configuration

Database Engine Configuration

Feature Configuration Rules

Installation Progress

Complete

☐ Default instance

☒ Named instance:

---

Instance ID:

---

SQL Server directory: C:\Program Files (x86)\Microsoft SQL Server\MSSQL12.SQLEXPRESS

Installed instances:

Instance Name	Instance ID	Features	Edition	Version
---------------	-------------	----------	---------	---------

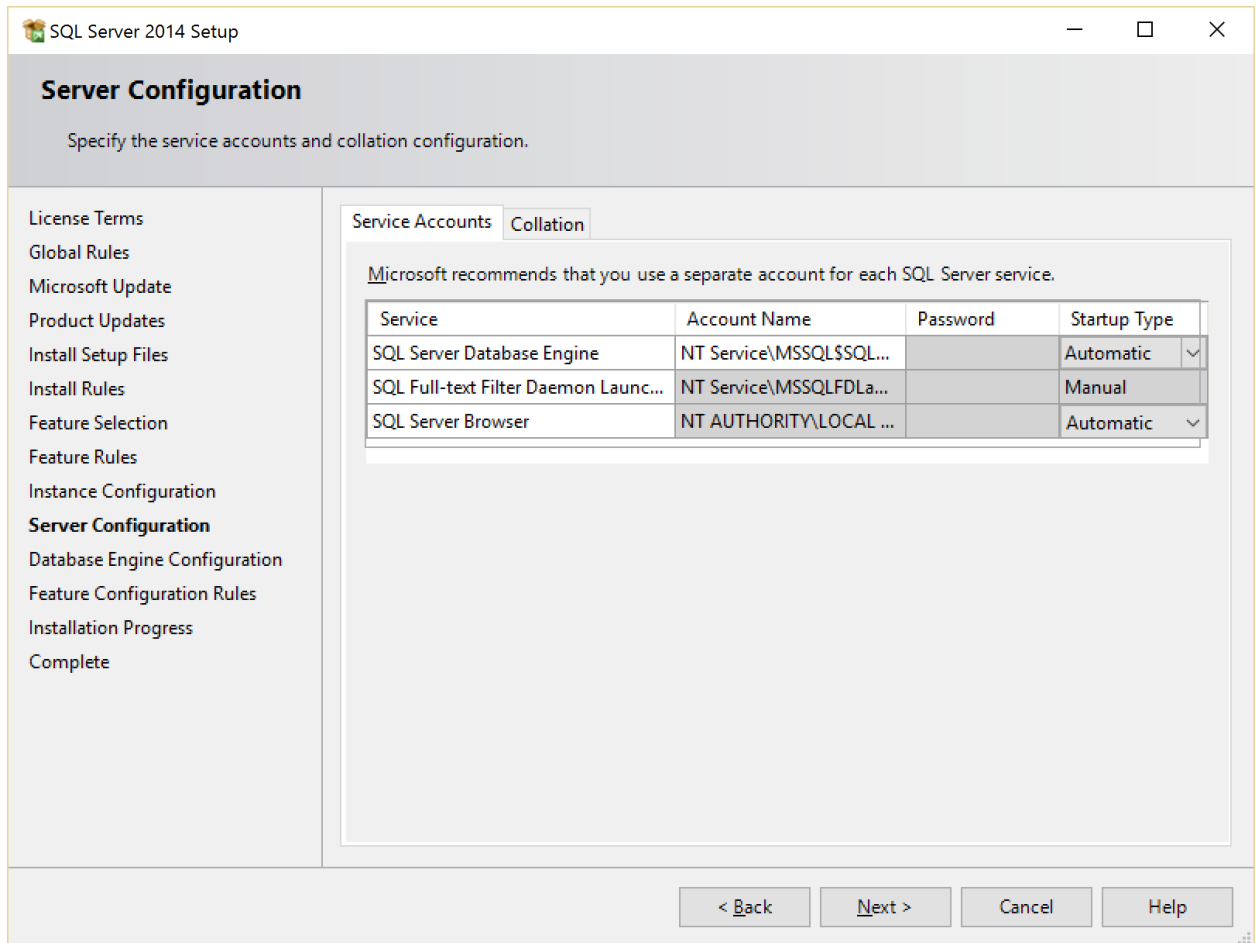
< Back

Next >

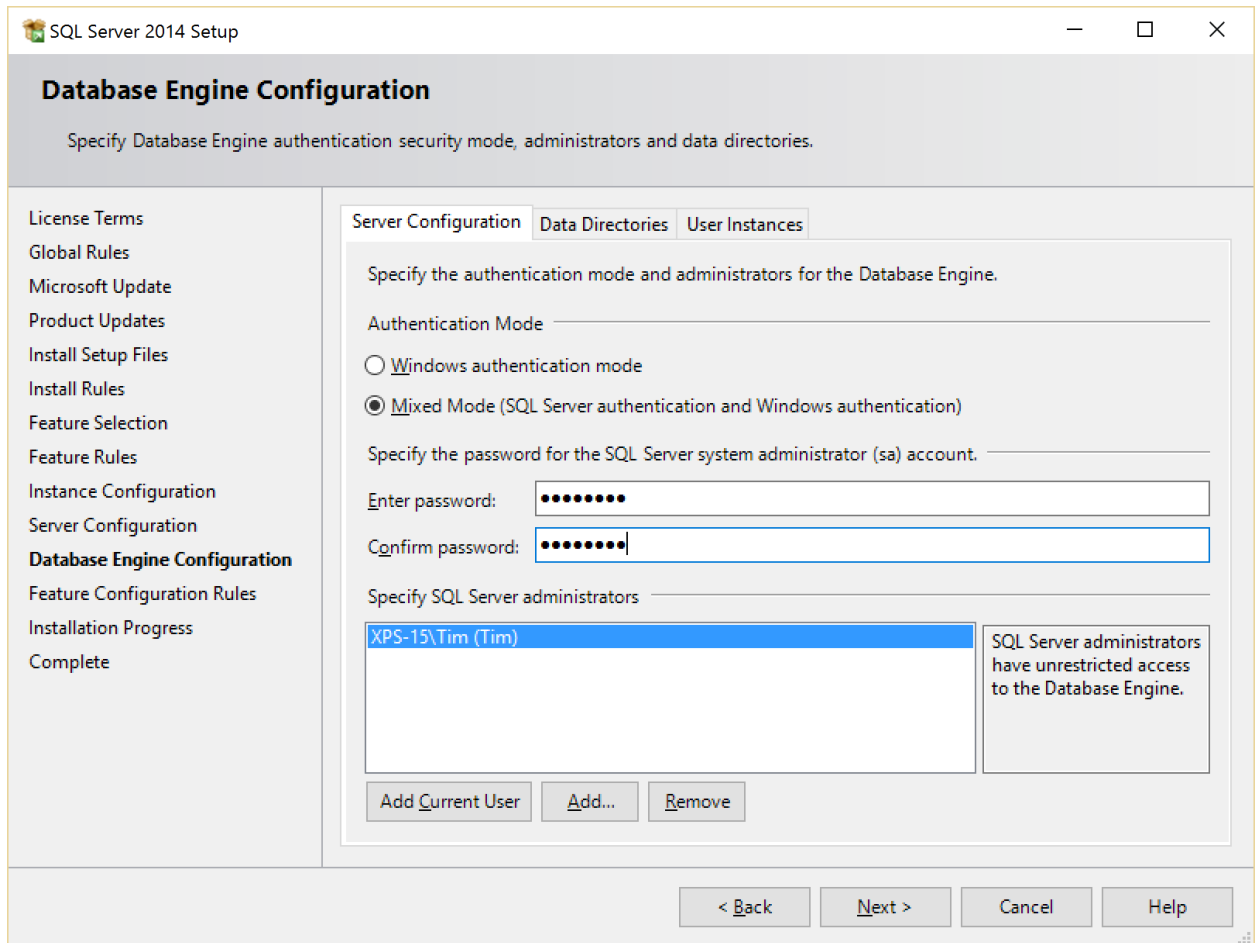
Cancel

Help

10. When you are ready, click Next.
11. At this step we will configure how the services will startup. You want to set both the **SQL Server Database Engine** and the **SQL Server Browser** startup type to be **Automatic**.

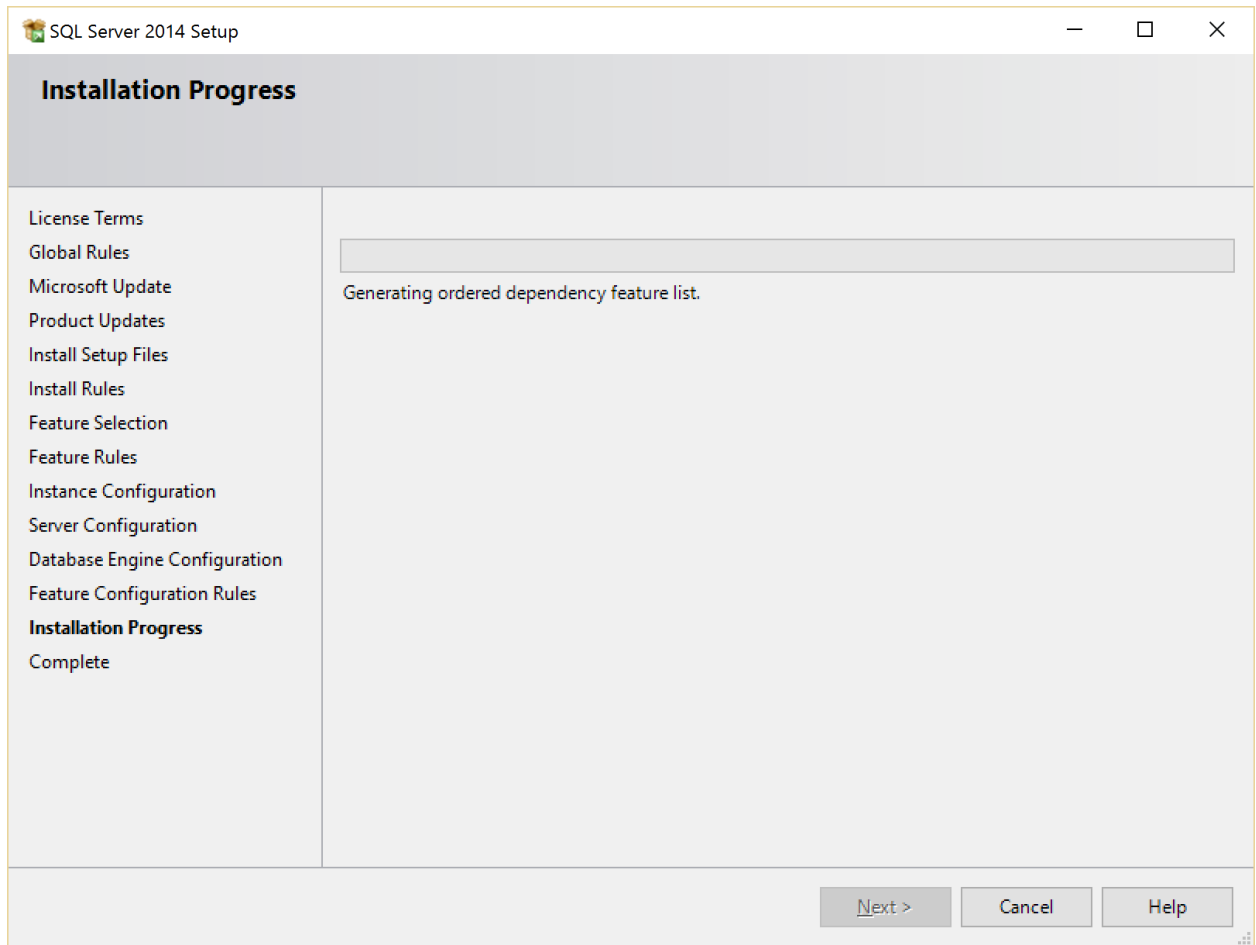


12. When you are ready, click Next.
13. Now, the installation will allow you to configure the Authentication methods. By default SQL will use Windows Authentication and it will automatically add the currently logged in user to the Administrators group. It is recommended that you set the Authentication Mode to Mixed Mode and set the default SQL sa Administrator password as this will provide a secondary method to gain access to SQL in case something happens to the Windows account that you have added.



14. When you have added all the Windows users to the Administrators list, click Next.
15. Now the system will install SQL on the computer.





16. Once this is complete, simply click on Finish and you can now install any Millennium Access Control software that you have to this system.