

Millennium Xtra

Technical Bulletin 038

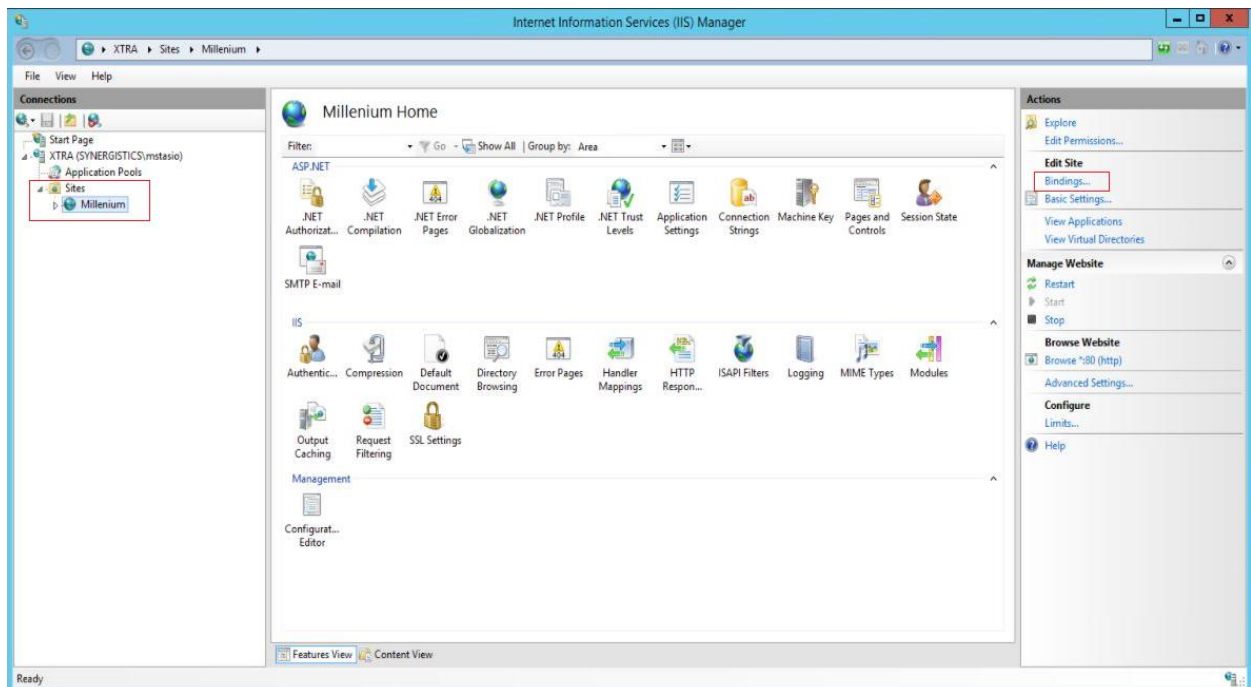
07-15-2016

Title: Changing the default Xtra website port

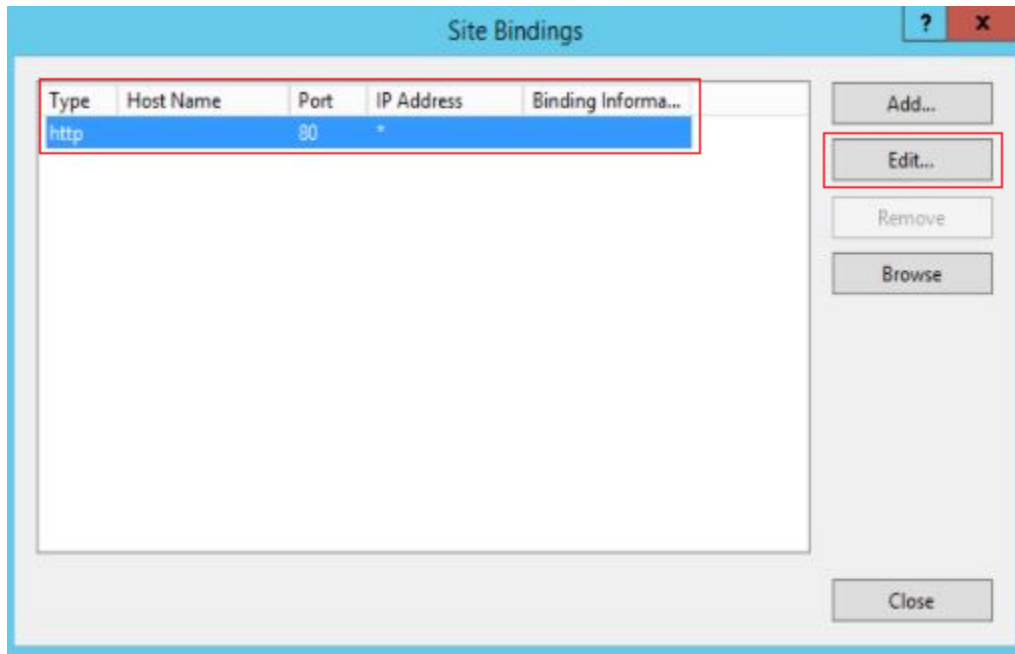
Contents: This document explains how to change the port used for the Xtra website after Xtra has been installed. By default, the Xtra website uses port 80.

Procedure:

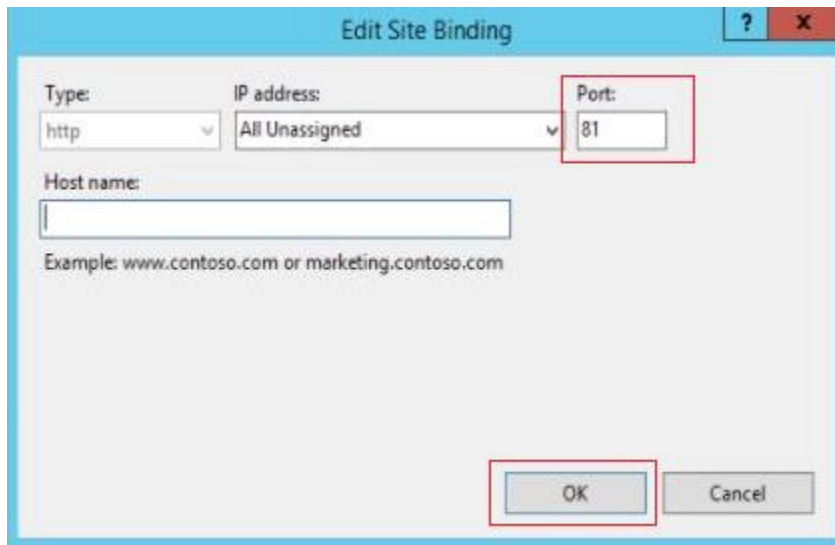
1. On the Millennium Xtra Server, open **Internet Information Services (IIS) Manager**.
2. In the left pane, click the arrow to expand the server and then expand **Sites**.
3. Click on the **Millennium** site to select it. In the right-pane, under **Edit Site**, click **Bindings**.



4. The **Site Bindings** window will be displayed. Highlight the line that states **http port 80** and click **Edit**:



5. On the **Edit Site Binding** screen, change the port from the default of 80 to the desired port number and then click **OK**.



6. Once the port change is saved, IIS will automatically restart the Millennium Xtra website and the change will take effect immediately.

7. After the change has been made, when entering the Xtra URL in a web browser, make sure to include the new port assignment. For instance, if you are on the server, you would normally be able to enter Localhost into the address bar. After changing the port, you must also specify the new port...for instance Localhost:81

Millenium Xtra package version		Licensed To
Installed update version:	4.0.1.17	Doors Mil Technical
Database version:	4.0.1.17	
Web site version:	4.0.1.17	
iAccess Startup service version:	4.0.1.10	
iAccess Scheduler service version:	4.0.1.15	
Routing Manager service version:	4.0.1.15	
Controller Manager	4.0.1.10	
Millenium Communicator	4.0.1.17	
CBoard Communicator	4.0.1.10	
ExTask Manager service version:	4.0.1.11	
BoschCCTV ExTask:	4.0.1.10	
DMP ExTask:	4.0.1.11	
FossCCTV ExTask:	4.0.1.10	
CardholdersImport ExTask:	4.0.1.10	
Bioentry ExTask:	4.0.1.10	

8. This completes the procedure.