



Millennium Expert/Enterprise Installation Guide Version 5.0.3599

Table of Contents

Section	Page
Installing Microsoft SQL Server	2
Installing Millennium Server software	9
Installing Millennium Databases	14
Configuring ODBC Data Sources on Server	18
Licensing the Millennium Server software	21
Installing the Millennium Workstation software	23
Creating SQL Server Logins for Millennium Workstation Connections	28
Configuring ODBC Data Sources on Workstation	35
Setting the RF Password	39
Configuring the Workstation and Server IP's in Setup Millennium	41

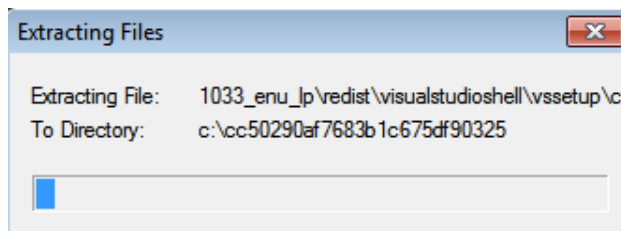
Installing Microsoft SQL Server

Millennium Expert and Enterprise version 5.0x use Microsoft SQL Server databases. Microsoft SQL Server must be installed on the Millennium server in order to run the Millennium software. Microsoft SQL Server 2012 Express is recommended and included on the installation DVD. Microsoft SQL Server 2008 R2 Express is also supported in this release.

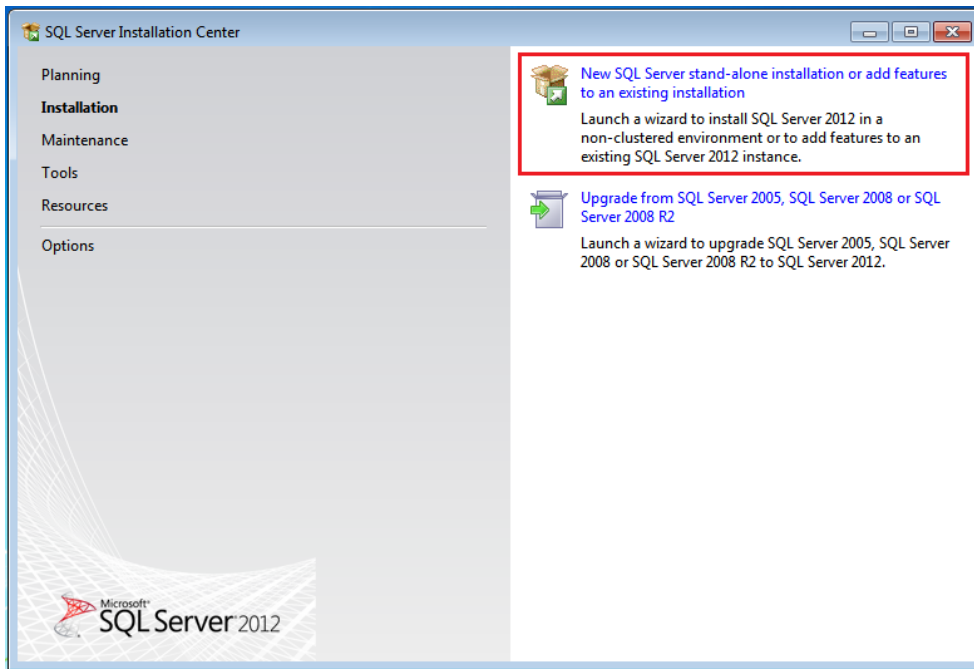
Note Microsoft SQL Server 2008 R2 Express and SQL Server 2012 Express limit the databases to a maximum size of 10 GB. Typically the 10 GB limit is adequate for most Millennium installations but for very large installations, it may be necessary to purchase the “Standard” edition of SQL Server to remove the 10 GB limitation.

Procedure:

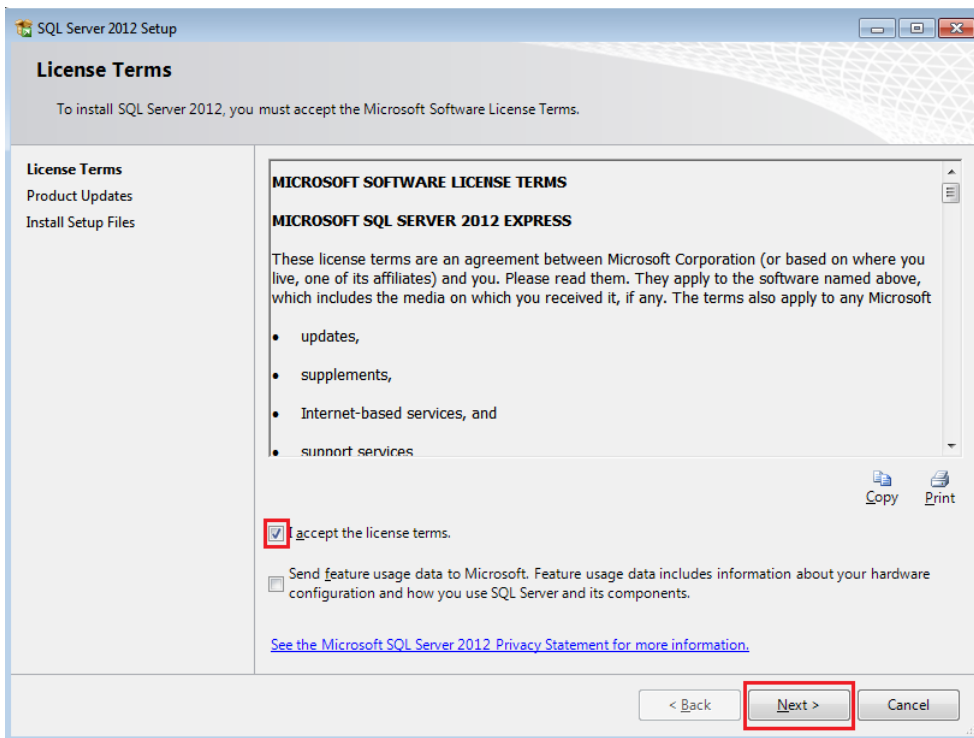
1. In Windows Explorer, browse to the DVD drive and open the folder called **SqlServer**.
2. Start the SQL Server installation by double clicking the setup file:
 - a. If the server has a 64 bit version of Windows, execute **SQL2012EXPRADV_x64.exe**
 - b. If the server has a 32 bit version of Windows, execute **SQL2012EXPRADV_x86.exe**
3. After double clicking the appropriate file, the installation will begin to extract files:



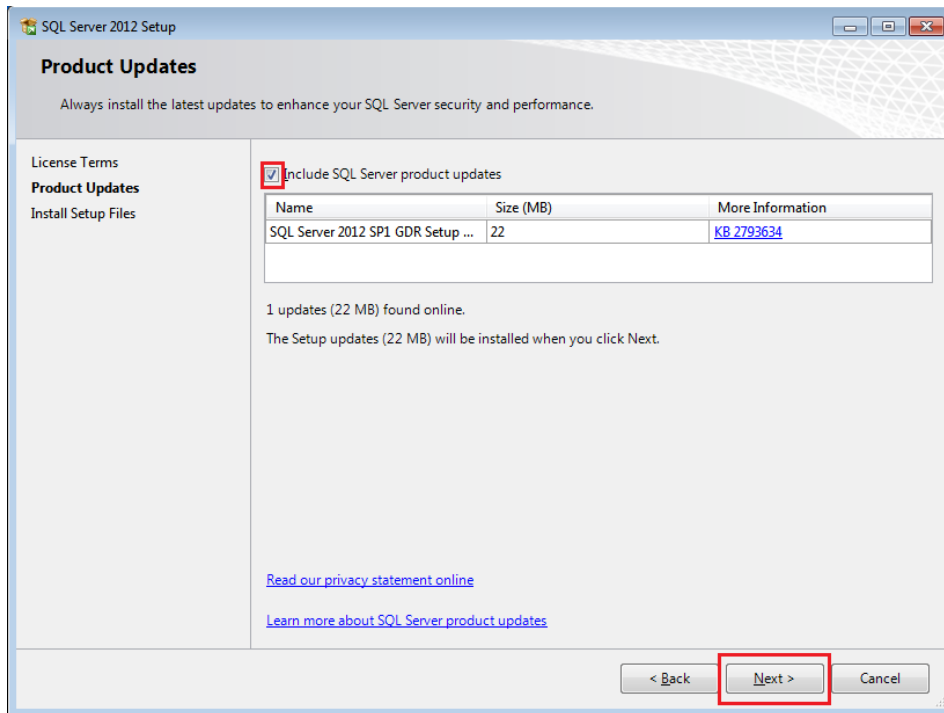
4. Once the files are extracted, the **SQL Server Installation Center** screen will be displayed. Select the option **New SQL Server stand-alone installation or add features to an existing installation**.



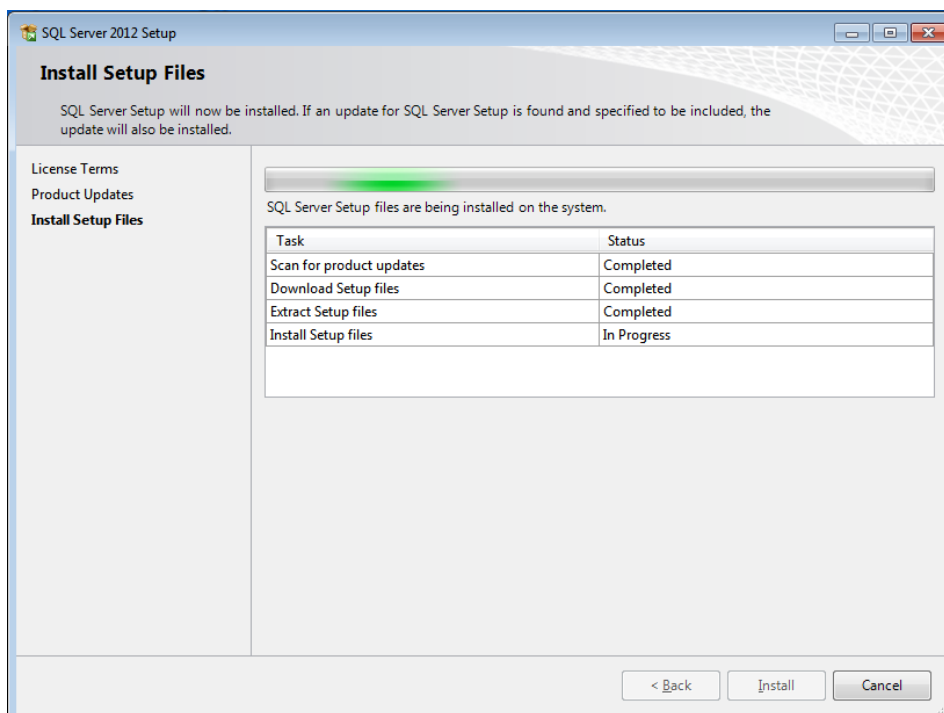
5. A **License Terms** screen will be displayed. Click the checkbox labelled **I accept the license terms** and then click **Next**:



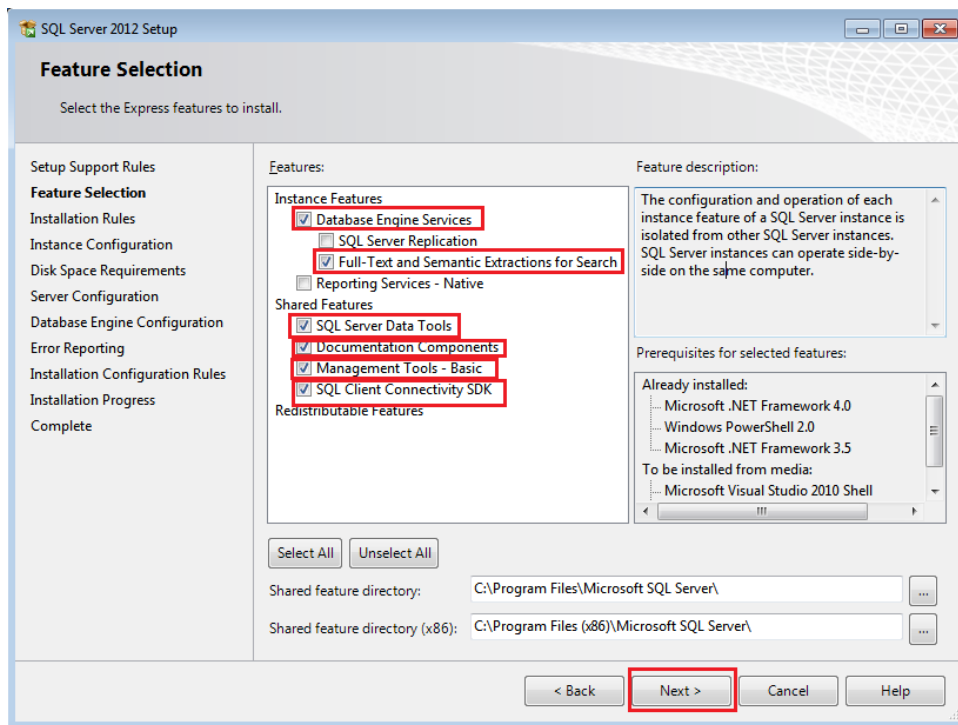
- The **Product Updates** screen will be displayed. It is recommended that you apply the latest updates. If the server has an internet connection, check the checkbox labelled **Include SQL Server product updates** and then click **Next**:



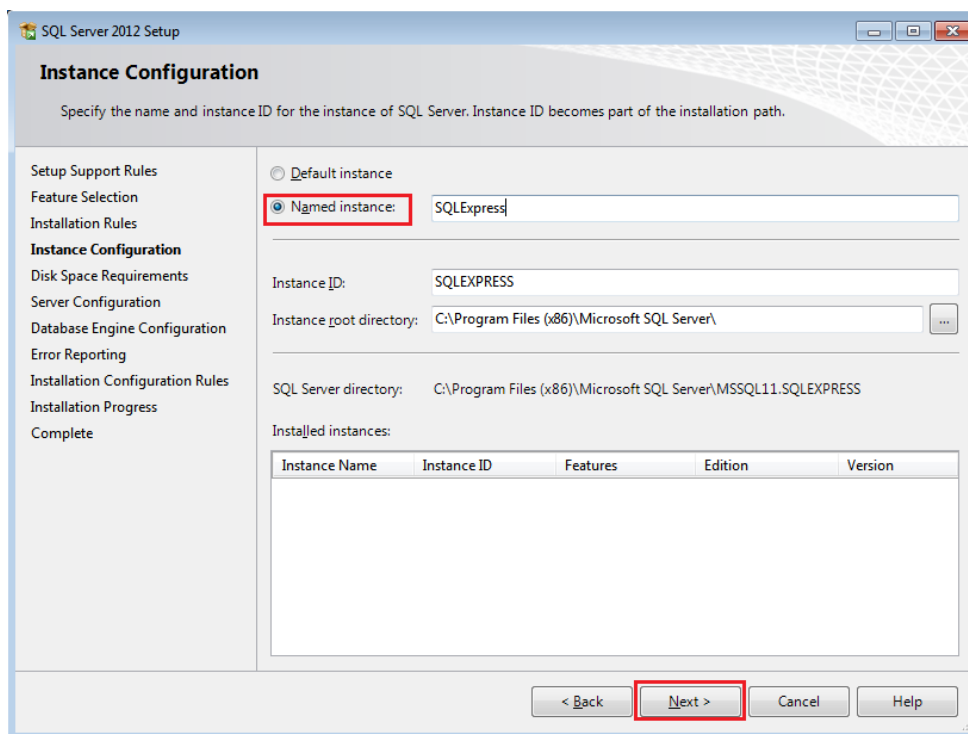
- The Install Setup Files screen will appear. If you selected the option to download product updates, the updates will also be downloaded to the server. Once the tasks are complete, click the **Install** button:



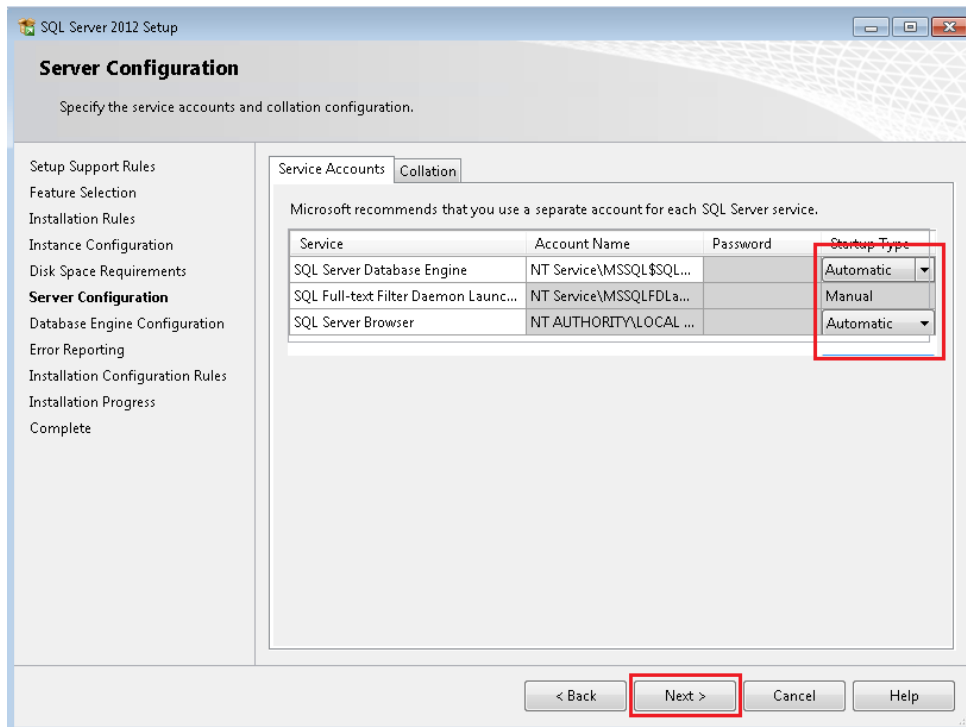
8. The **Feature Selection** screen will be displayed. Ensure that all of the checkboxes except for **Reporting Services – Native** and **SQL Server Replication** are checked. Click **Next** to continue:



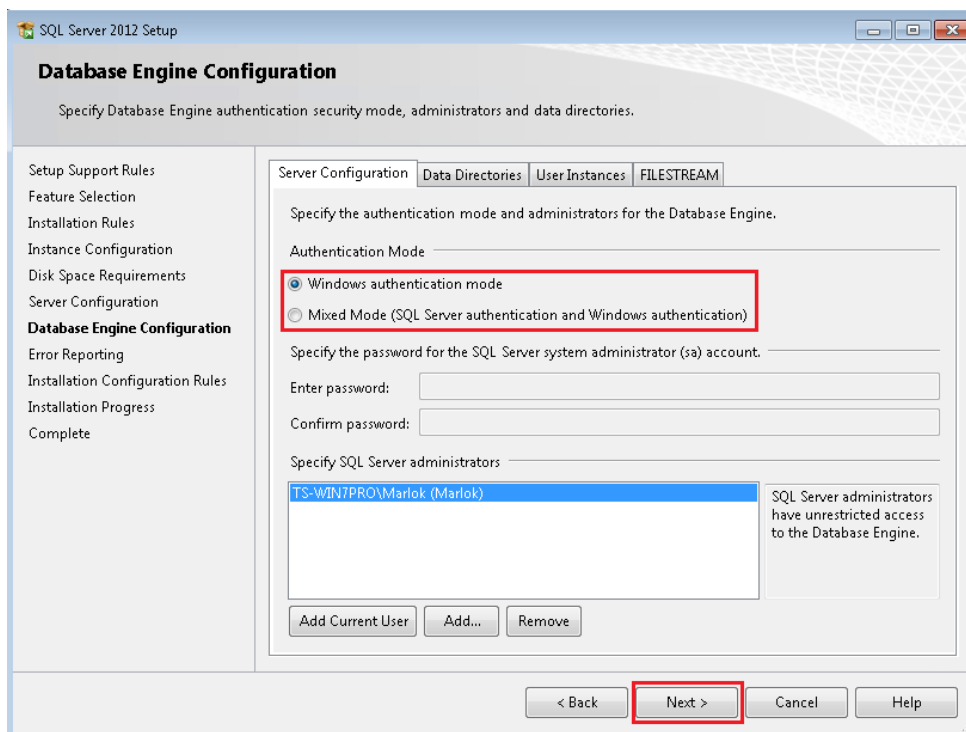
9. The Instance Configuration screen will appear. Leave the selection at **Named Instance** with **Instance ID** of **SQLExpress**. Click **Next**:



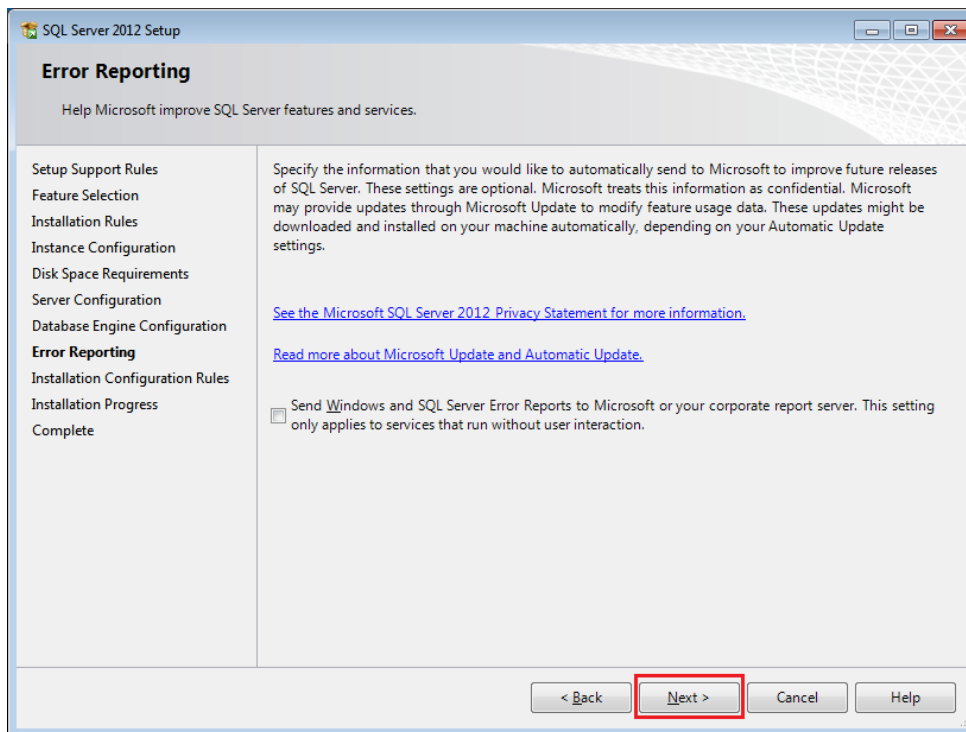
10. Ensure that **SQL Server Database Engine** and **SQL Server Browser** are set for **Automatic**. Ensure that **SQL Full-text Filter Daemon Launcher** is set for **Manual**. Click Next to continue:



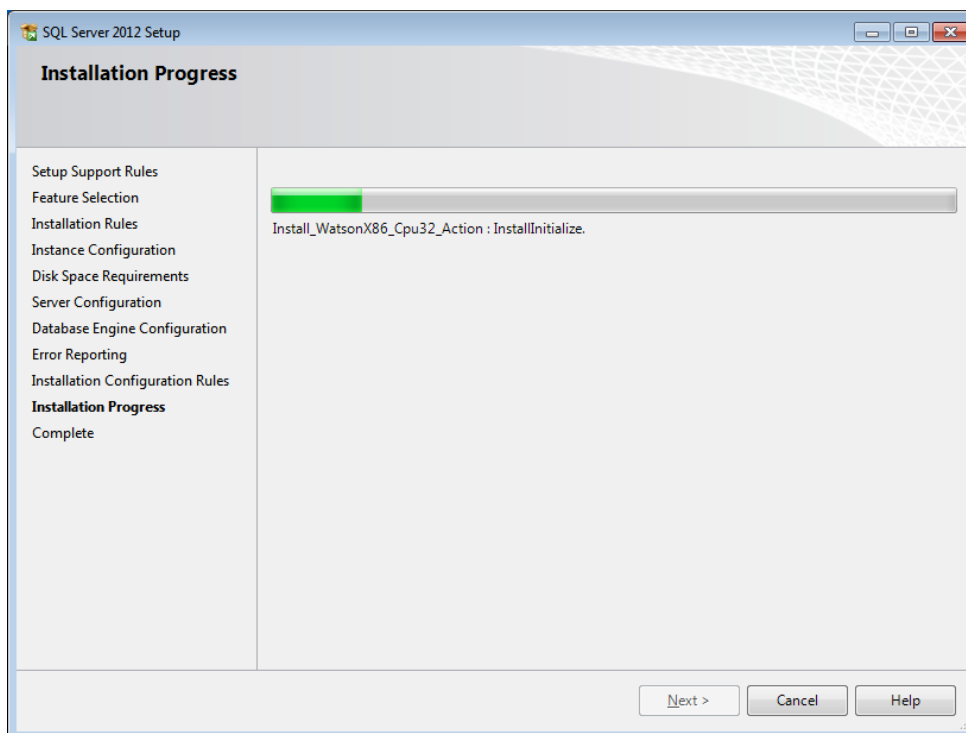
11. Select the **Authentication Mode**. Either can be used however if the Millennium server is not in a Windows Domain, **SQL Server Authentication** must be used and, therefore, **Mixed Mode** should be selected. Click **Next**:



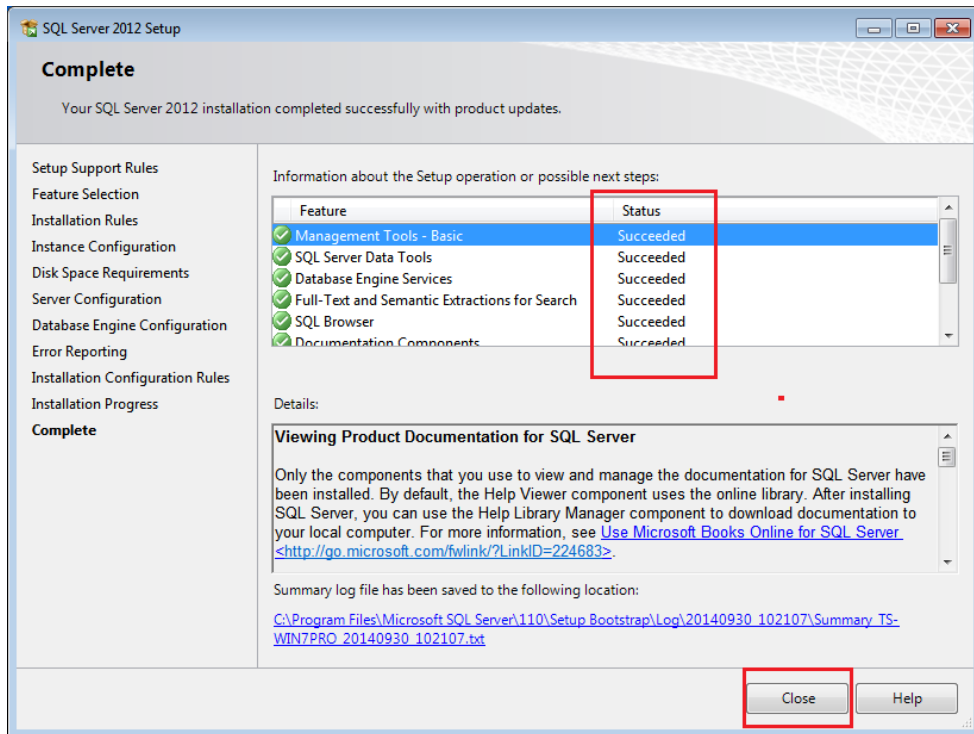
12. The **Error Reporting** screen will be displayed. Click **Next**:



13. The SQL Server installation will begin. This process can take 15 minutes or longer:

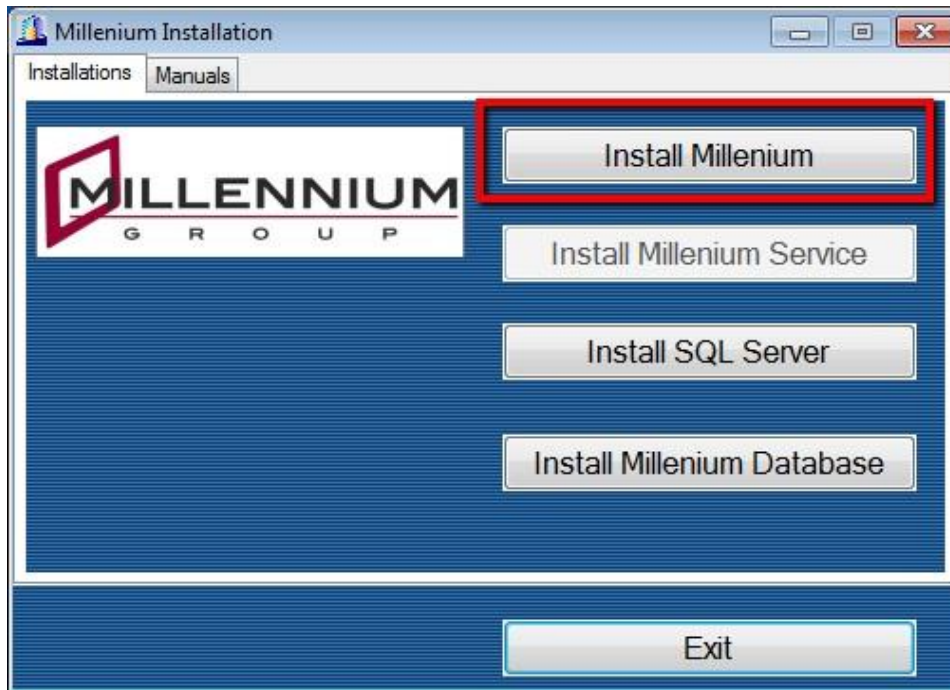


14. The installation should display a **Complete** screen once it is finished. Each feature should be reported as **Succeeded**. Click **Close** to complete the installation of Microsoft SQL Server:

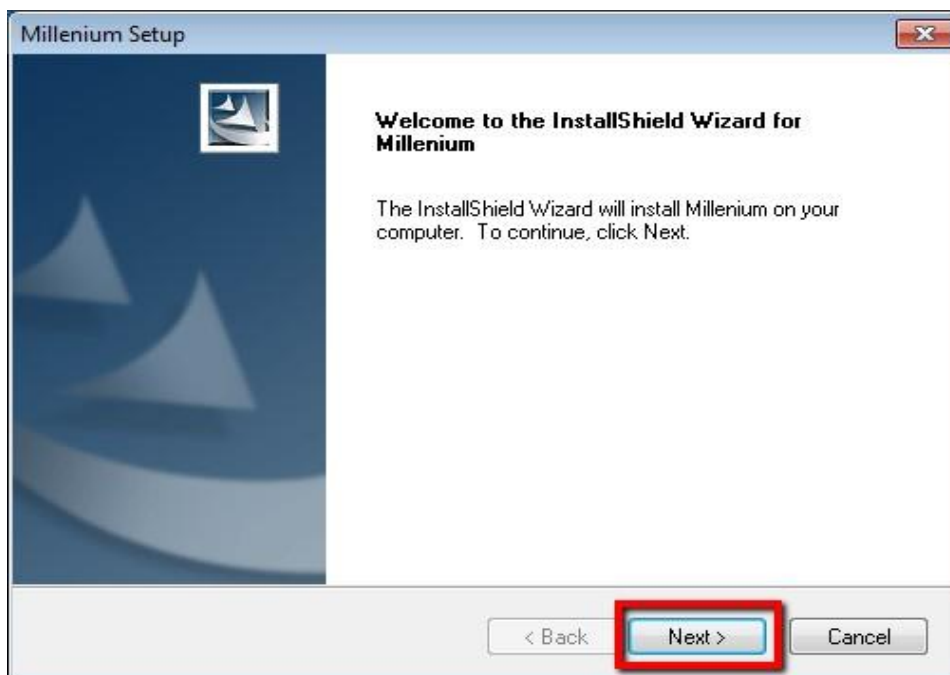


Installing Millennium Server software

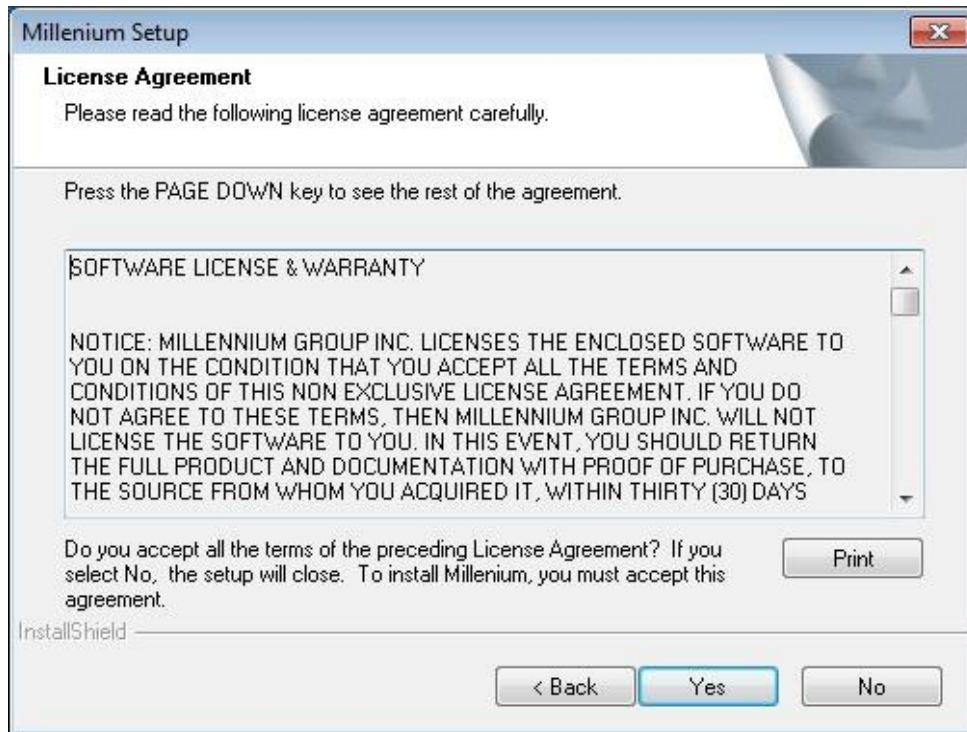
1. Insert the Millennium installation DVD into the DVD drive on the server. Browse to the DVD drive and double-click the file **Setup.exe**. At the Setup window, click the **Install Millennium** button:



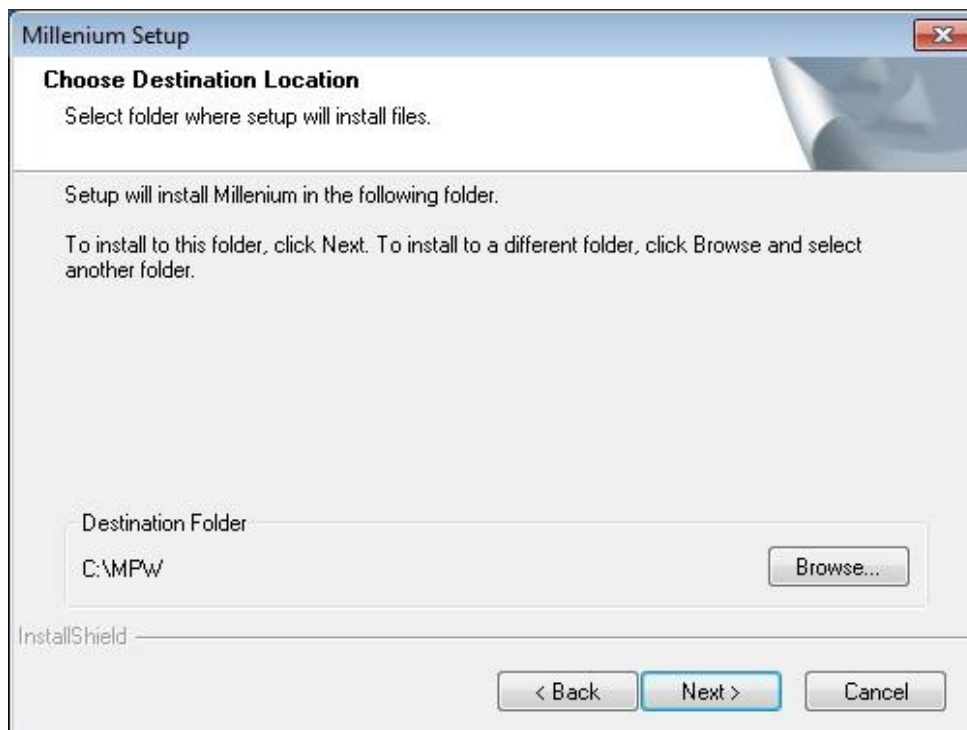
2. The **Welcome to the InstallShield Wizard for Millennium** screen will be displayed. Click **Next** to continue:



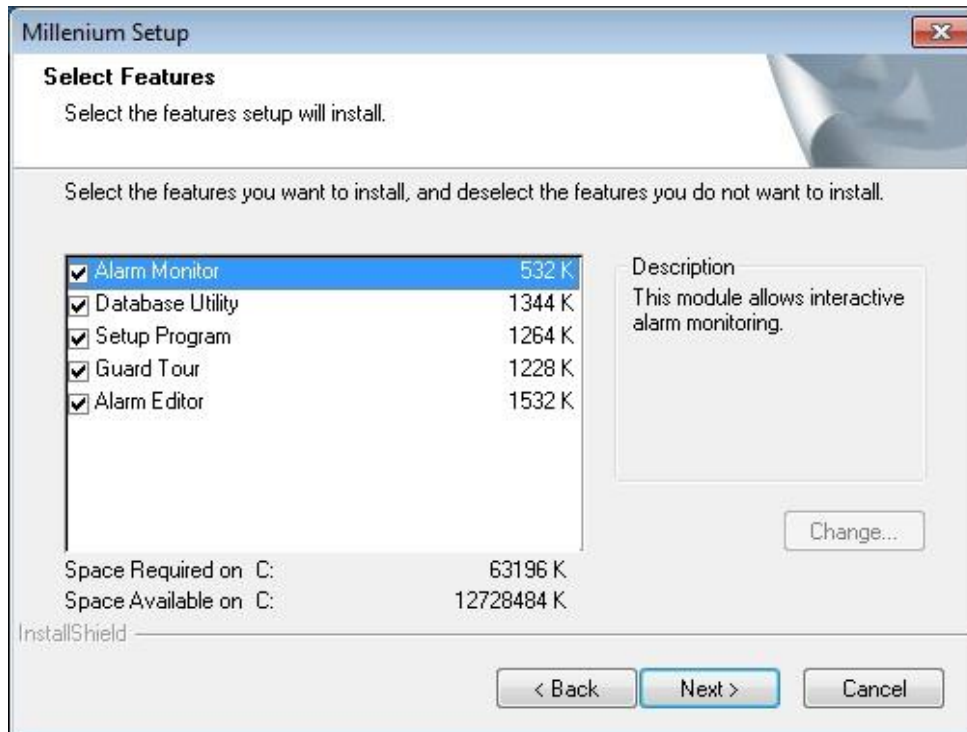
3. The **License Agreement** screen will be displayed. Read the license agreement and click **Yes** if you agree to it:



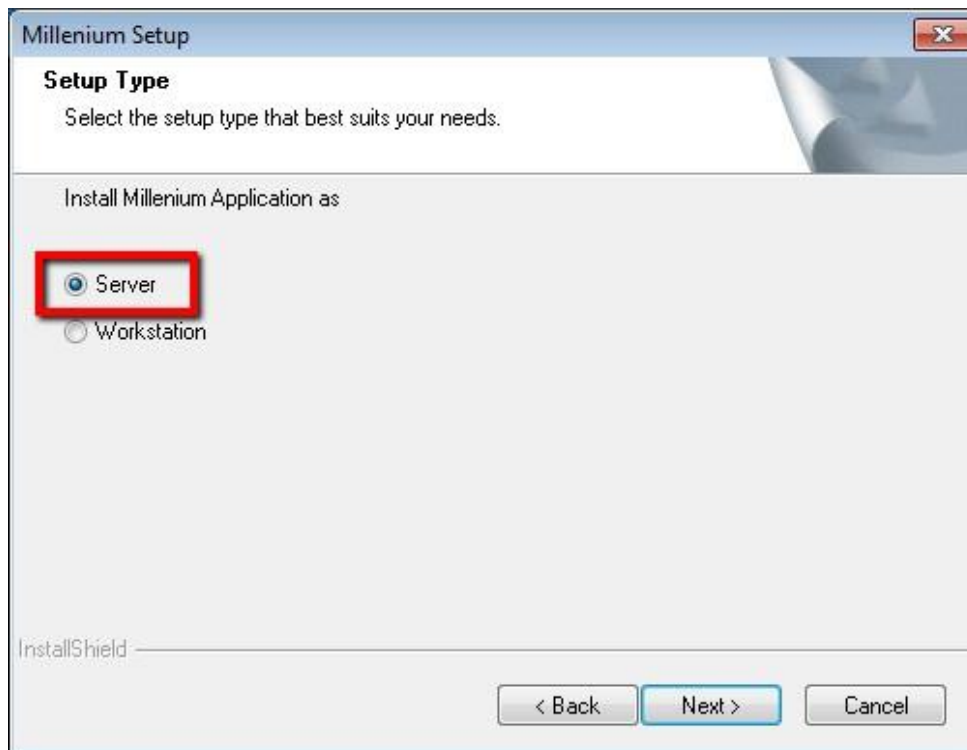
4. The **Choose Destination Location** screen will be displayed. If you want Millennium installed in the default location, C:\MPW, click **Next**. Otherwise click **Browse** and select the path to which you want Millennium installed, then click **Next**:



5. The **Select Features** screen will be displayed. It is recommended to leave all features selected. Click **Next** to continue:



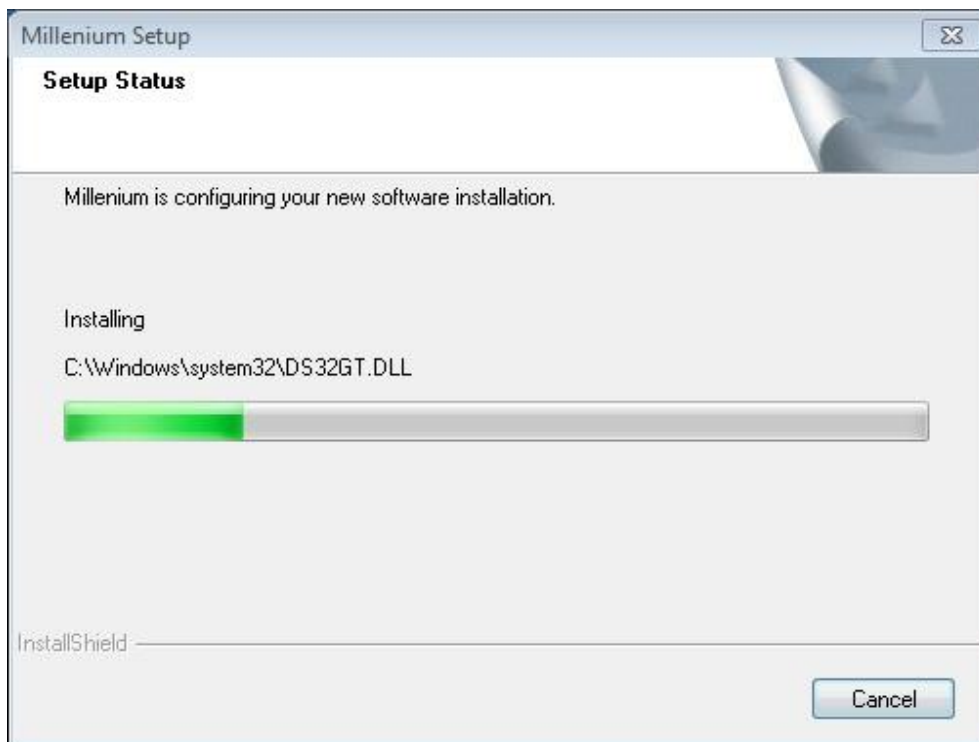
6. The **Setup Type** screen will be displayed. Ensure that **Server** is selected and click **Next**:



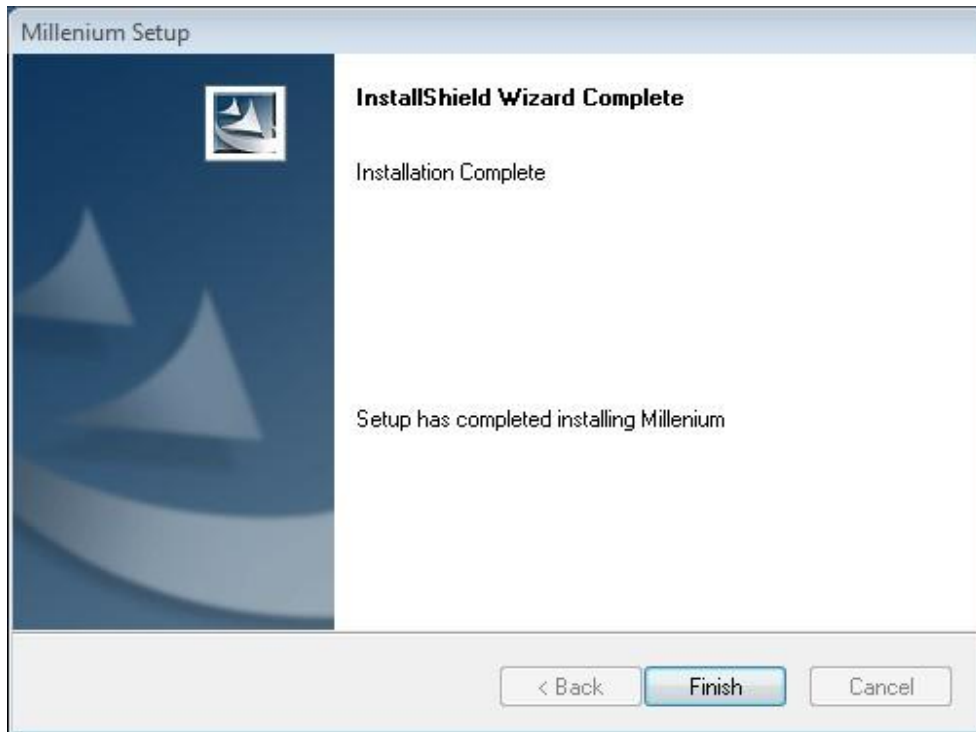
7. The **Select Program Folder** screen will be displayed. It is recommended to leave this at default Program Folder, **Millennium**. Click **Next** to continue:



8. The **Setup Status** screen will be displayed and the Millennium software installation will begin. Wait for the installation to complete:



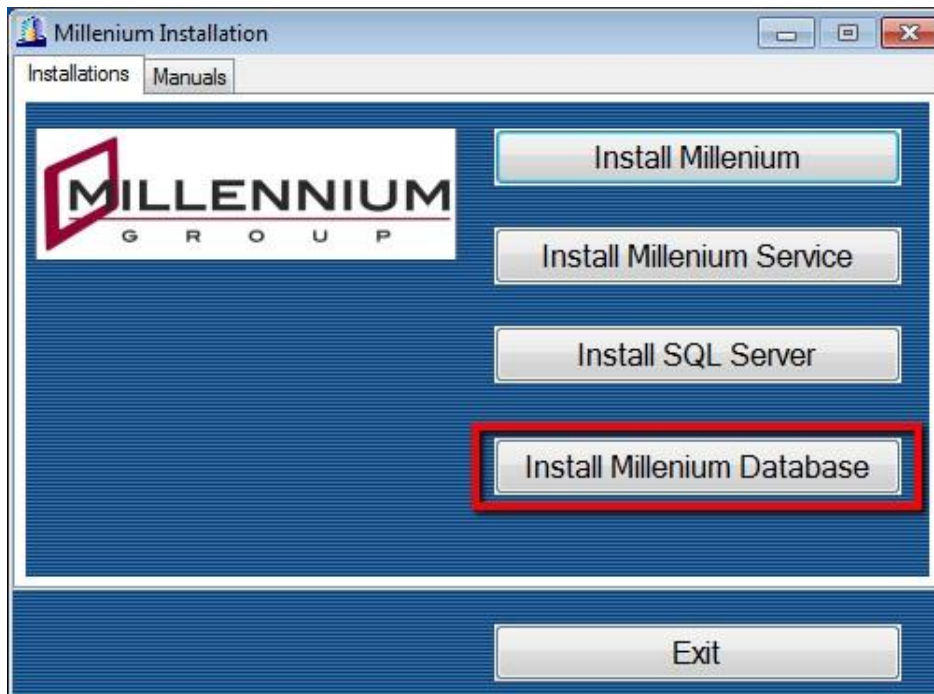
9. Once the software installation has finished, the **InstallShield Wizard Complete** screen will be displayed. Click **Finish** to complete the installation of the Millennium Server software:



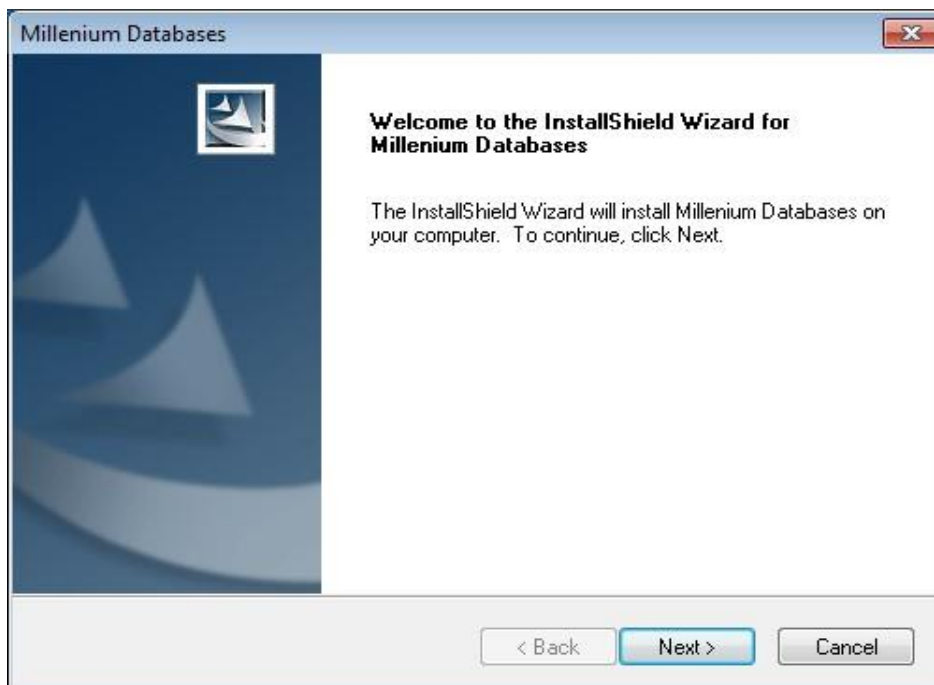
Note Before you can click the **Finish** button, you must click the **Taskbar** and then you will be able to click the **Finish** button.

Installing Millennium Databases

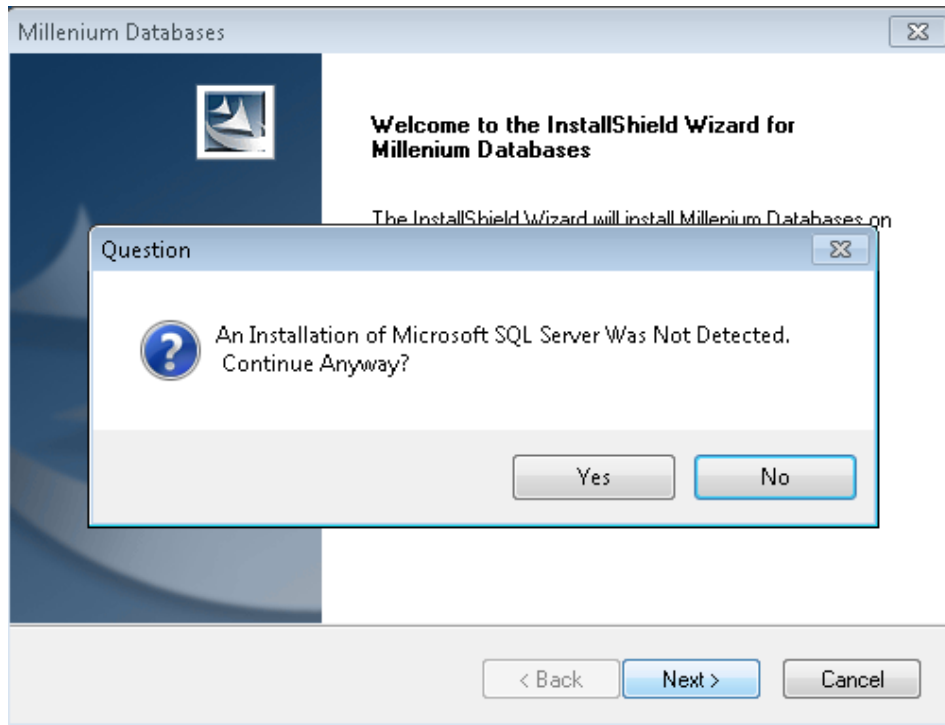
1. Insert the Millennium installation DVD into the DVD drive on the server. Browse to the DVD drive and double-click the file **Setup.exe**. At the Setup window, click the **Install Millennium Database** button:



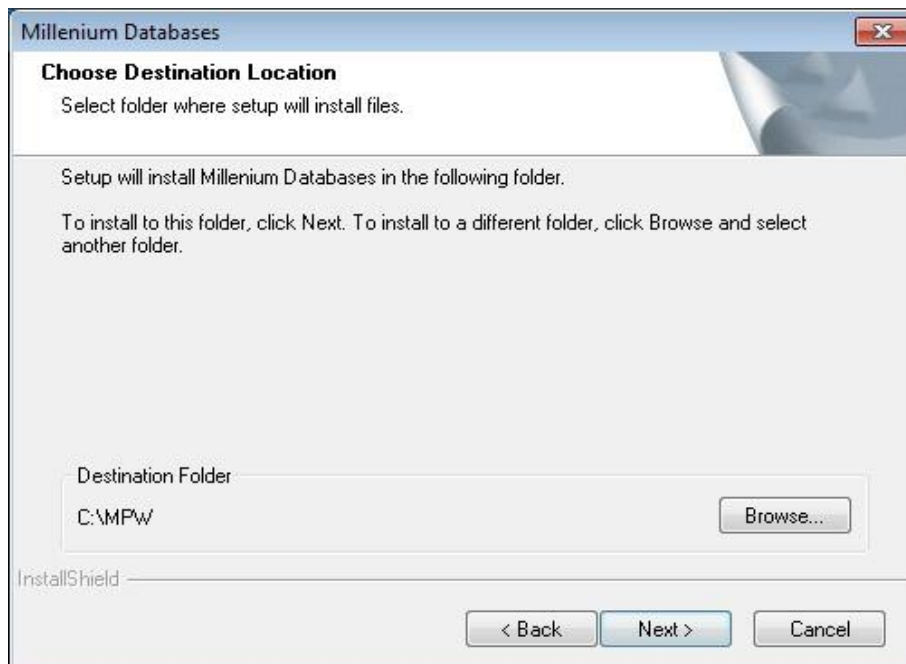
2. The **Welcome to the InstallShield Wizard for Millennium Databases** screen will be displayed. Click **Next** to continue:



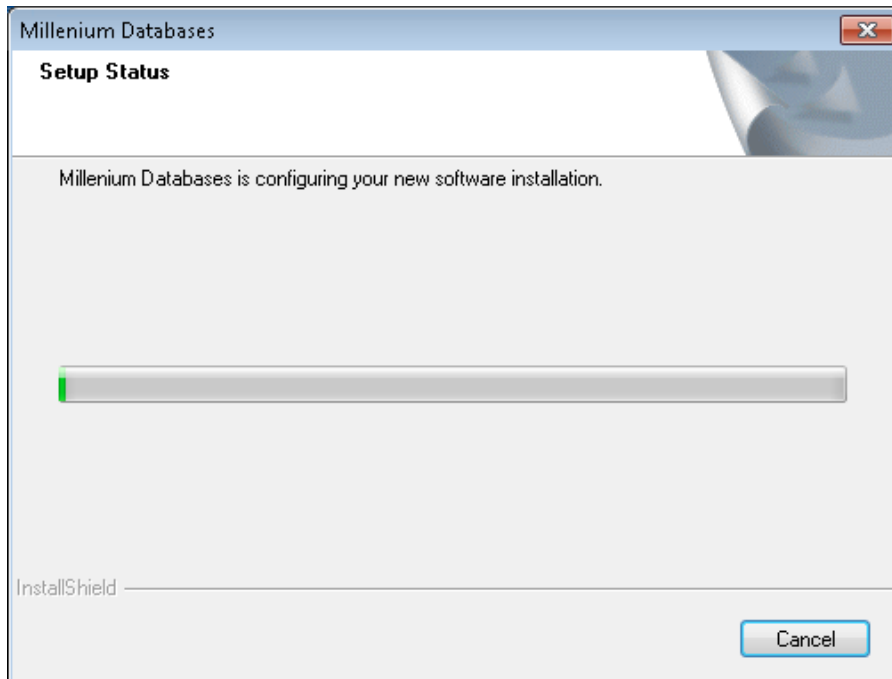
3. A question box will be displayed stating **“An Installation of Microsoft SQL Server Was Not Detected. Continue Anyway?”**. The installation looks specifically for Microsoft SQL Server 2005, which is no longer recommended for use with Millennium Expert/Enterprise version 5.0. Click **Yes** to continue.



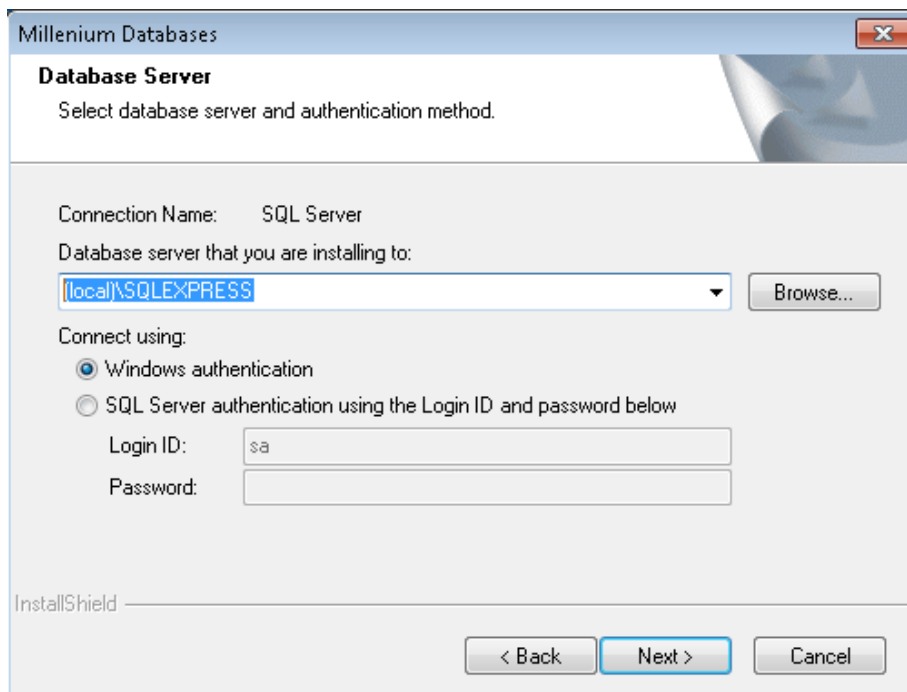
4. The **Choose Destination Location** screen will appear. If you want to install Millennium Databases to the default location, click **Next**. Otherwise, click **Browse** and select the path to which you would like to install the databases to and then click **Next**:



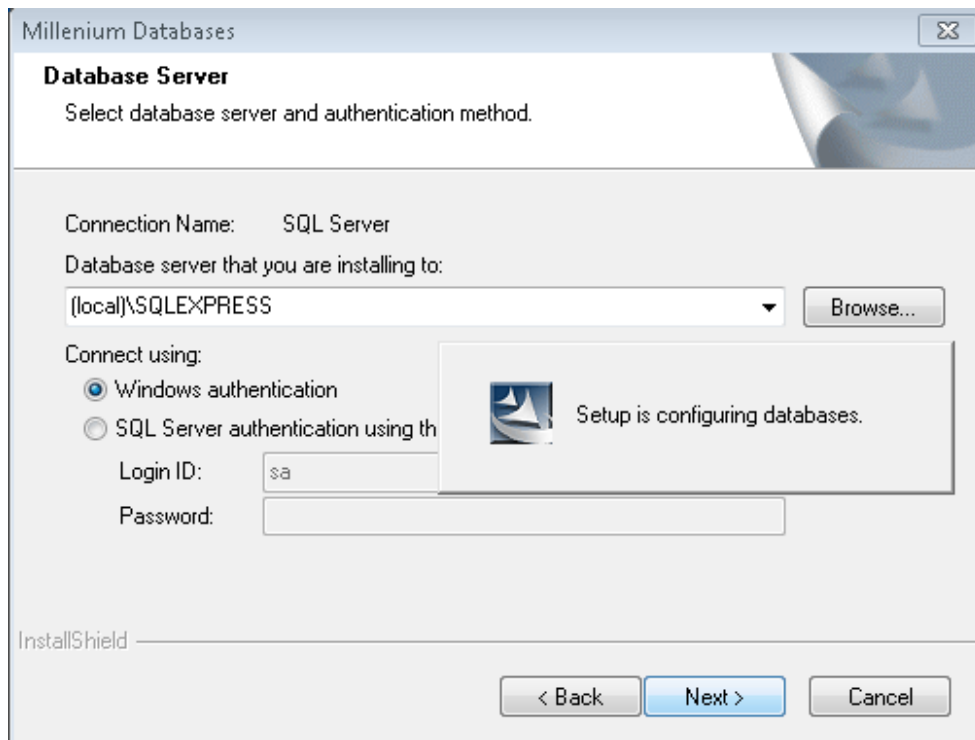
5. The **Setup Status** screen will be displayed with a progress bar:



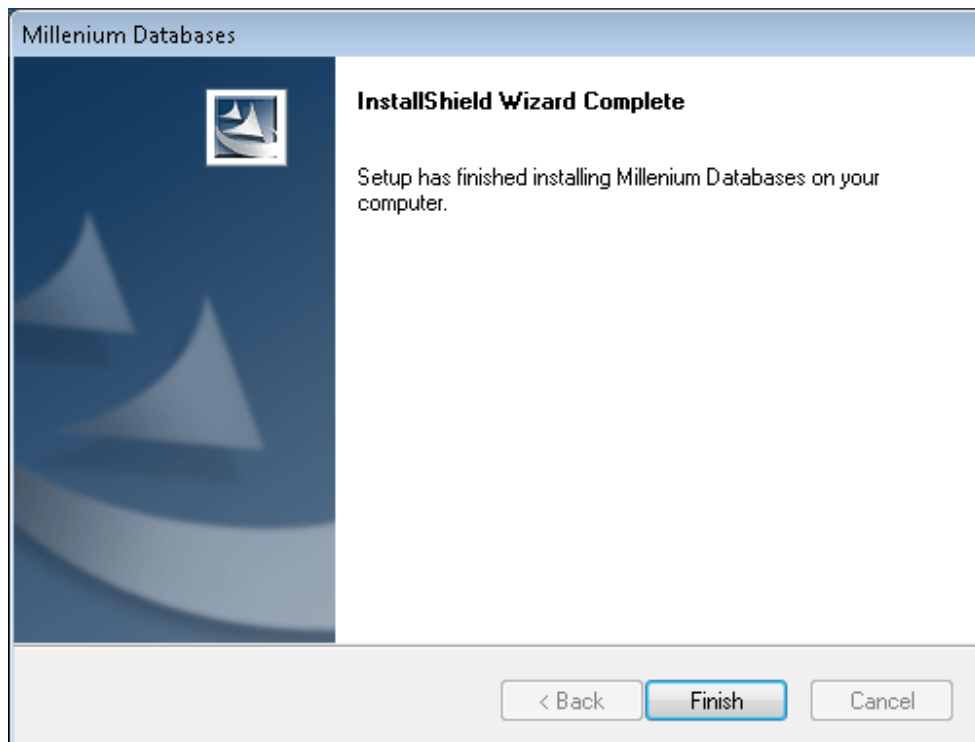
6. The **Database Server** screen will be displayed. In the **Database server that you are installing to** box, enter the **server name** and **SQL server instance name**. Typically, **[local]\SQLEXPRESS** will work if SQL Server was installed on the server using the procedure outlined earlier in this document. The authentication method must also be selected. Either leave it at **Windows Authentication** or, if you selected **SQL Server Authentication** during the SQL Server Install, change it to **SQL Server Authentication** and input the **Login ID** and **Password**:



7. The installation will connect to SQL Server and create the Millennium Databases and Data Sources:



8. The **Installation Wizard Complete** screen will be displayed. Click **Finish** to complete the installation of the Millennium Databases:



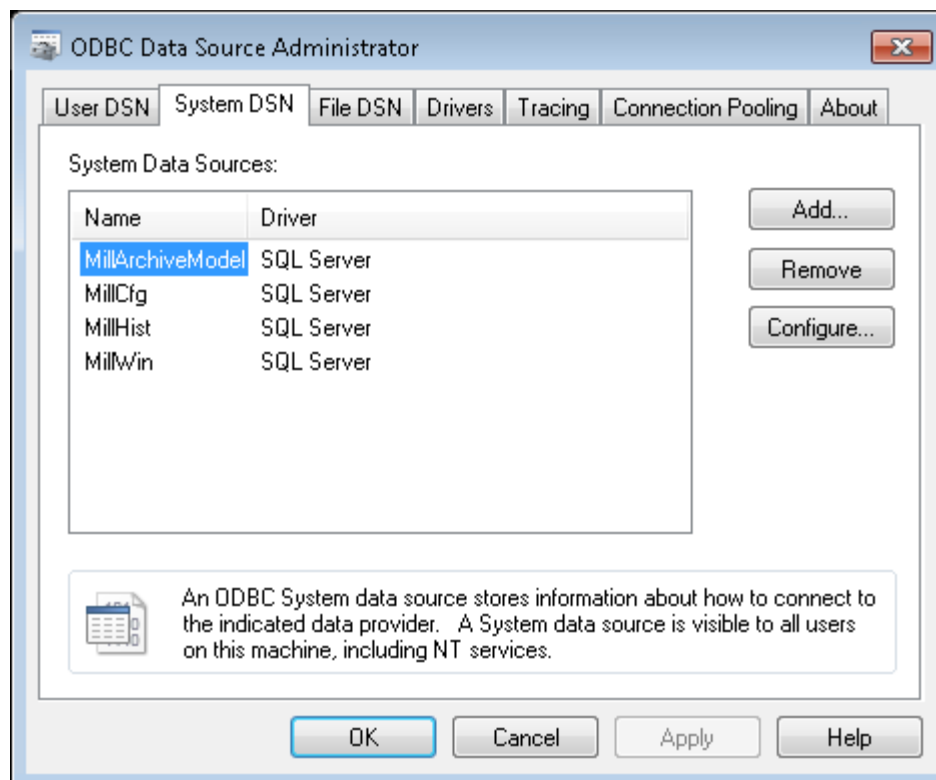
Configuring ODBC Data Sources on Server

The Millennium Expert/Enterprise software uses ODBC connections to connect to the Millennium databases. The ODBC Data Sources must be properly configured on the server in order for the software to run. The procedure for configuring the ODBC Data Sources varies slightly depending on whether the Windows Operating System on the server is 32 bit or 64 bit.

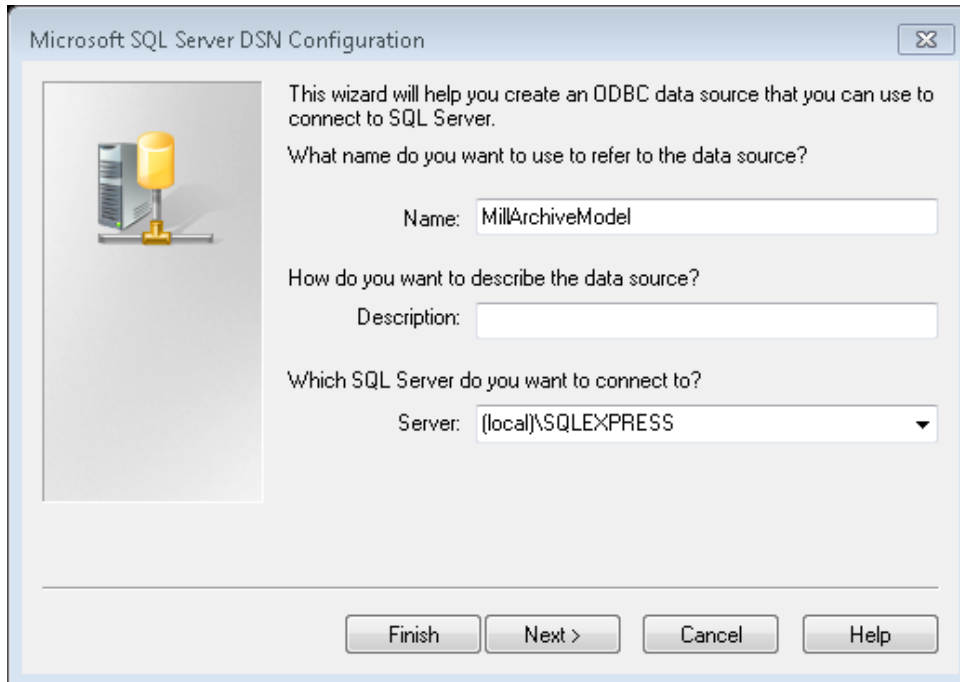
1. If the Windows Operating System is a 32 bit version, open the **ODBC Administrator** by going to **Control Panel > Administrative Tools > Data Sources (ODBC)**.

If the Windows Operating System is a 64 bit version, open the **ODBC Administrator** by opening **Windows Explorer** and going to the **Windows\SysWOW64** folder and executing the file called **odbcad32.exe**.

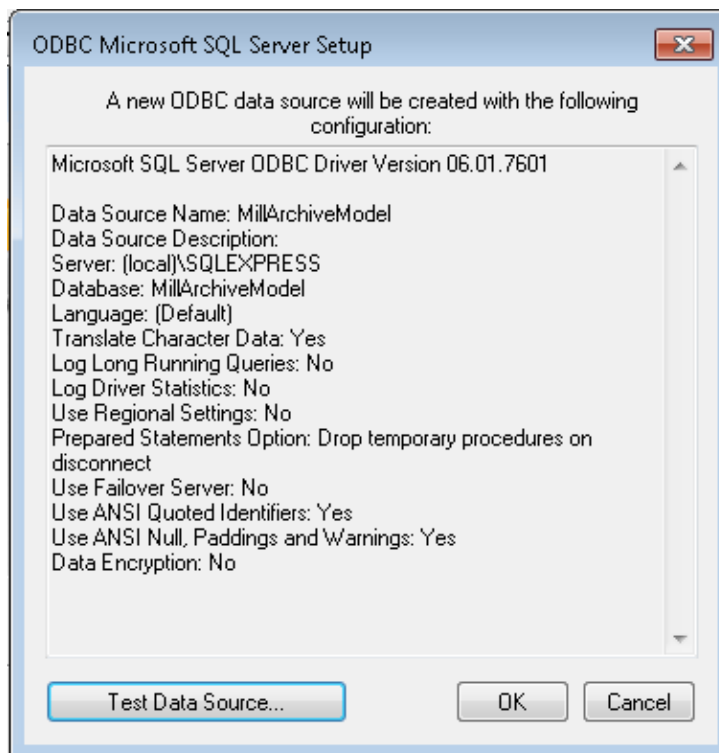
2. The **ODBC Data Source Administrator** window will be displayed. Click the **System DSN** tab:



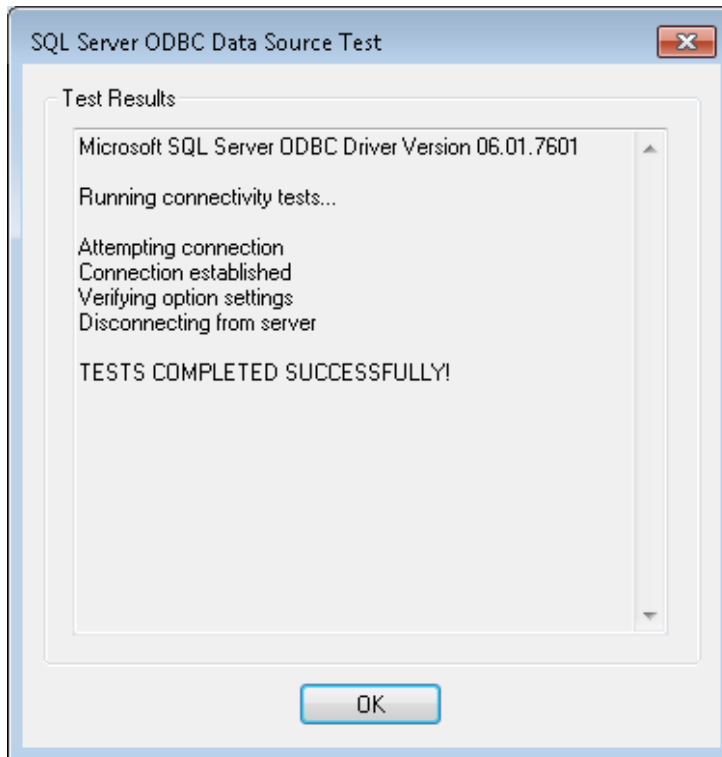
3. Select the first System Data Source, **MillArchiveModel**, and click **Configure**. In the **Which SQL Server do you want to connect to?** box, enter the server name and SQL instance name. Typically, **[local]\SQLEXPRESS** will work if SQL Server was installed on the server using the procedure outlined earlier in this document. Click **Finish**:



4. The **ODBC Microsoft SQL Server Setup** window will be displayed. Click **Test Data Source**:



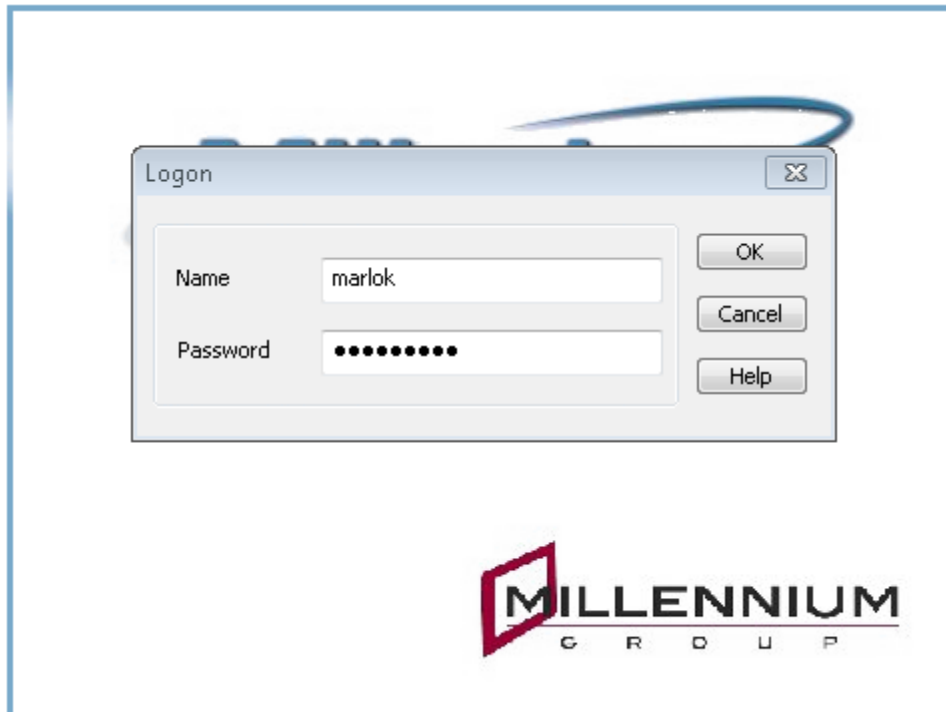
5. Verify that you receive a message indicating **TESTS COMPLETED SUCCESSFULLY!**. Click **OK** to close the window and then click **OK** again to return to the **ODBC Data Source Administrator**.



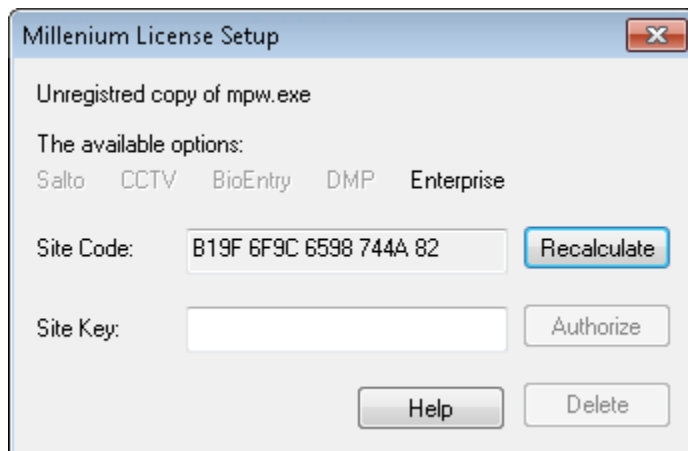
6. Repeat the steps for the remaining 3 ODBC **System Data Sources**: **MillCfg**, **MillHist**, **MillWin**.
7. This completes the configuration of the ODBC Data Sources on the Millennium Server.

Licensing the Millennium Server software

1. Open the **Setup Millennium** program from the **Start Menu**. Login to Setup Millennium using the default login. Name: **marlok** Password: **stcharles**

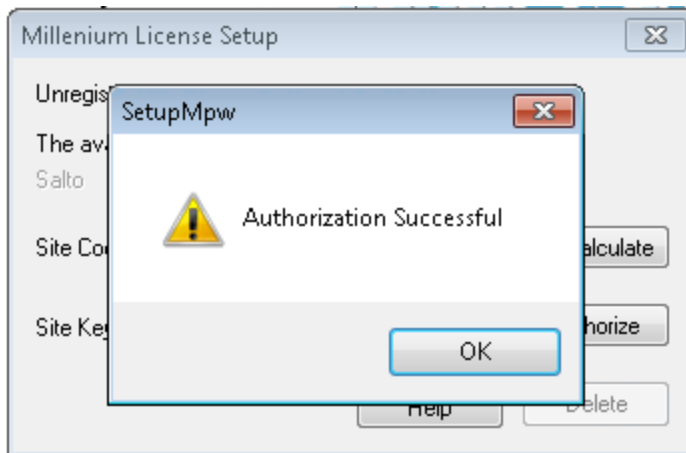


2. From the menu, select **Options > License Setup**. Click **Recalculate** to generate a **Site Code**:



3. Copy this Site Code and email it to Millennium Technical Support (tsupport@millennium-groupinc.com) along with the serial # and end-user customer name that is printed on the installation DVD that was shipped to you.
4. Once received, Millennium Technical Support will generate a **Site Key** and email it back to you.

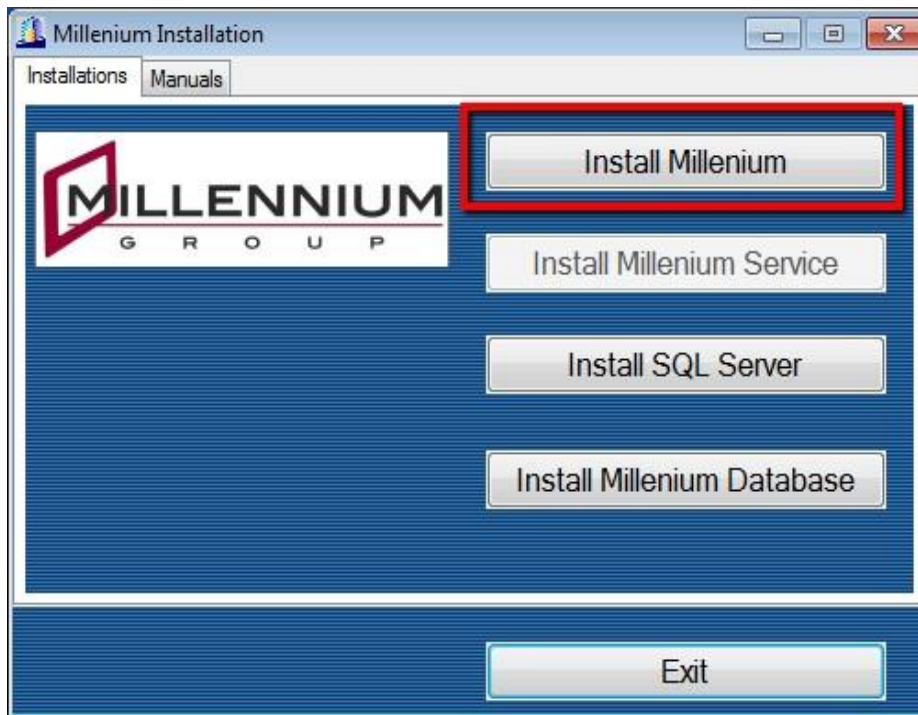
5. Copy the **Site Key** from the email and paste it into the **Site Key** box. Click **Authorize**:



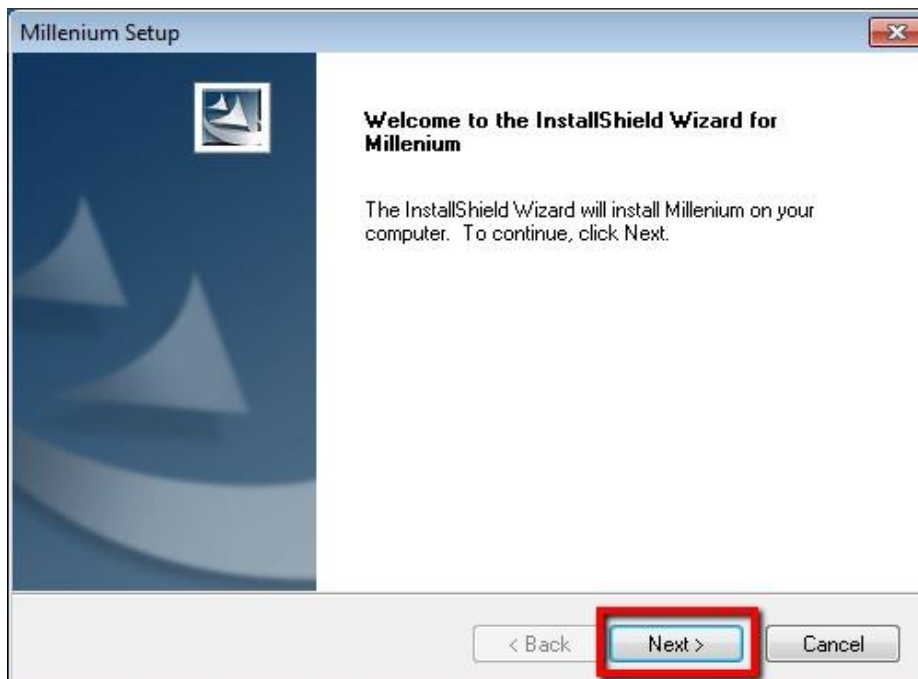
6. Click **OK** to close the **Authorization Successful** message and then click the **X** to close out of the **Millennium License Setup** window.
7. This completes the licensing of the Millennium Server software.

Installing the Millennium Workstation software

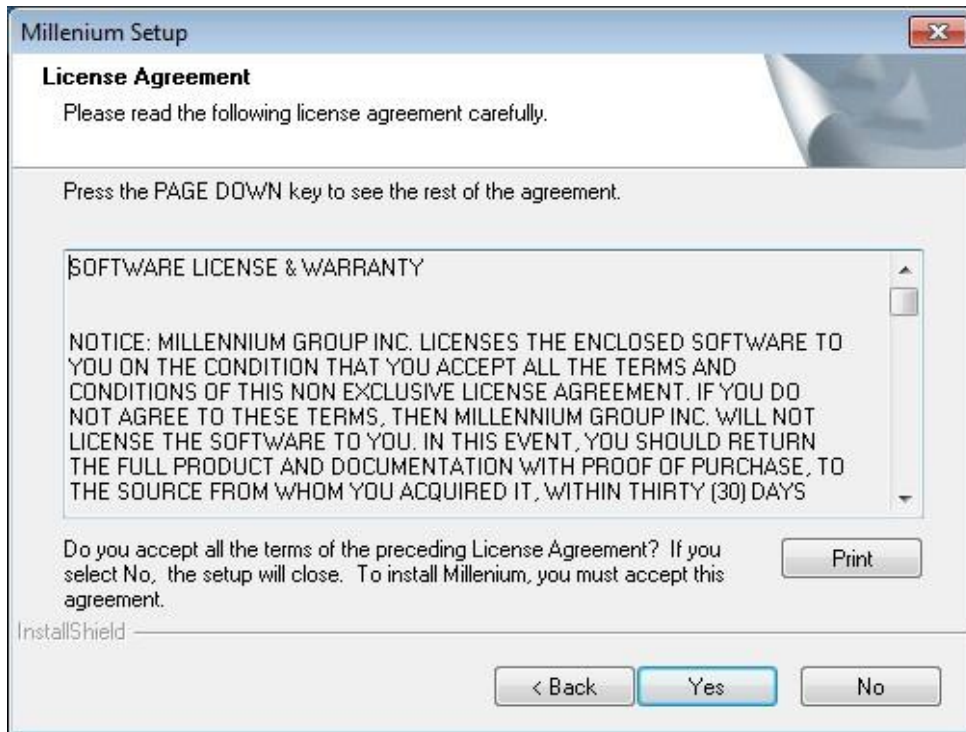
1. Insert the Millennium installation DVD into the DVD drive on the workstation. Browse to the DVD drive and double-click the file **Setup.exe**. At the Setup window, click the **Install Millennium** button:



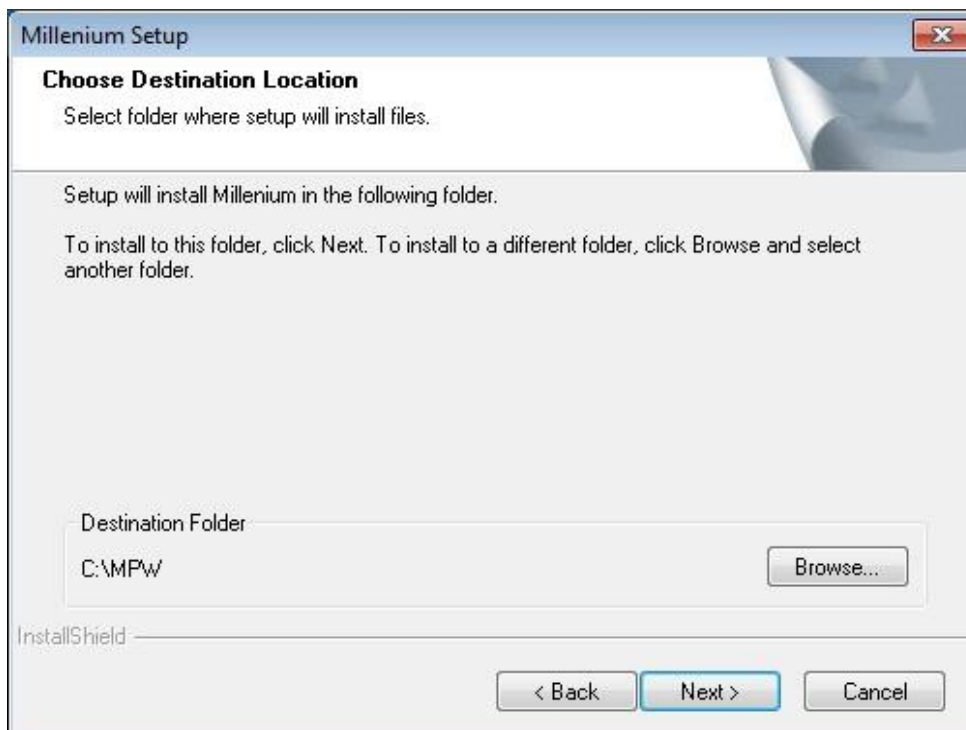
2. The **Welcome to the InstallShield Wizard for Millennium** screen will be displayed. Click **Next** to continue:



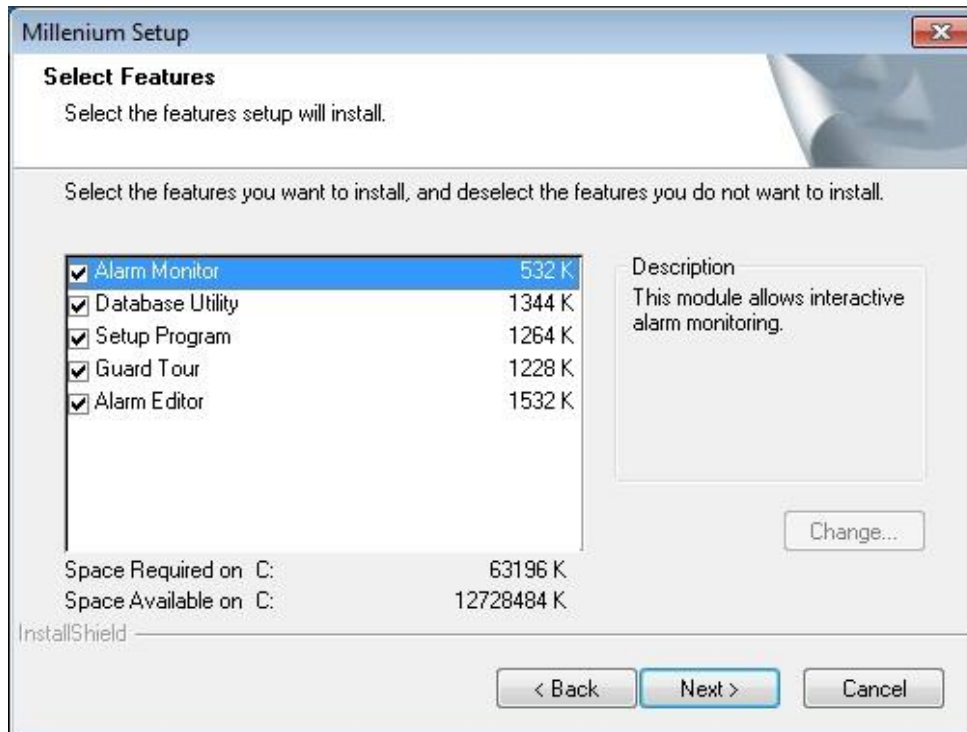
3. The **License Agreement** screen will be displayed. Read the license agreement and click **Yes** if you agree to it:



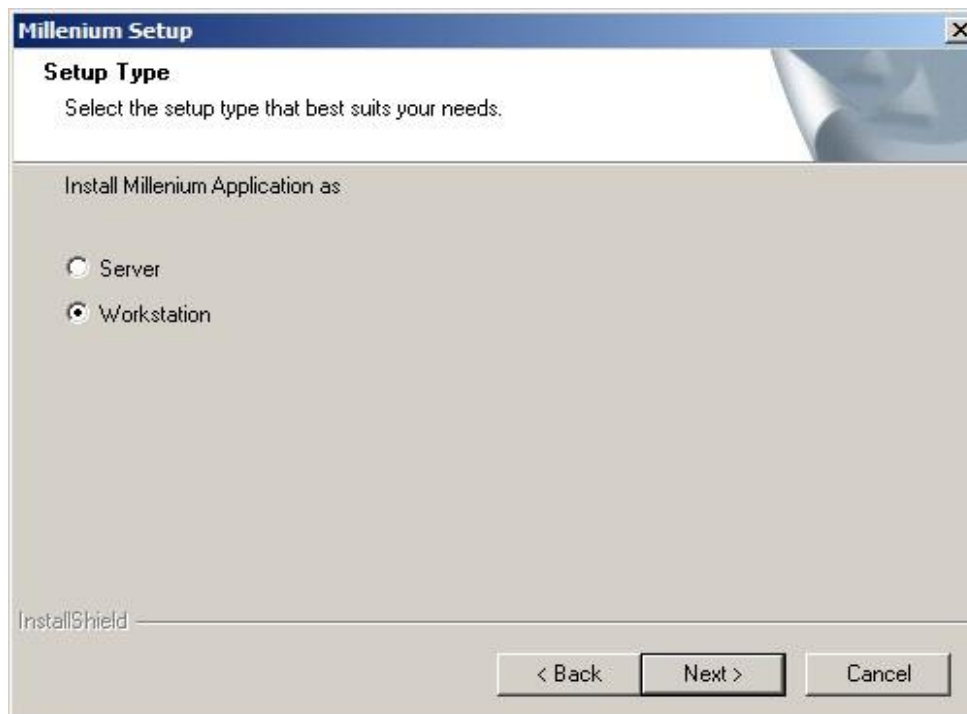
4. The **Choose Destination Location** screen will be displayed. If you want Millennium installed in the default location, C:\MPW, click **Next**. Otherwise click **Browse** and select the path to which you want Millennium installed, then click **Next**:



5. The **Select Features** screen will be displayed. It is recommended to leave all features selected. Click **Next** to continue:



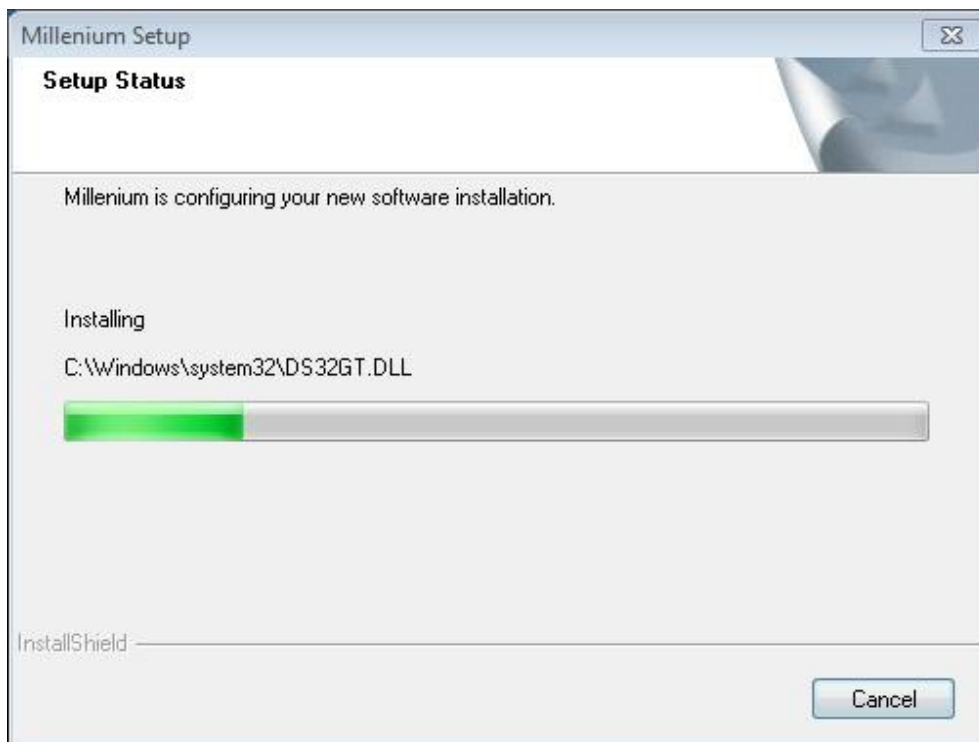
6. The **Setup Type** screen will be displayed. Ensure that **Workstation** is selected and click **Next**:



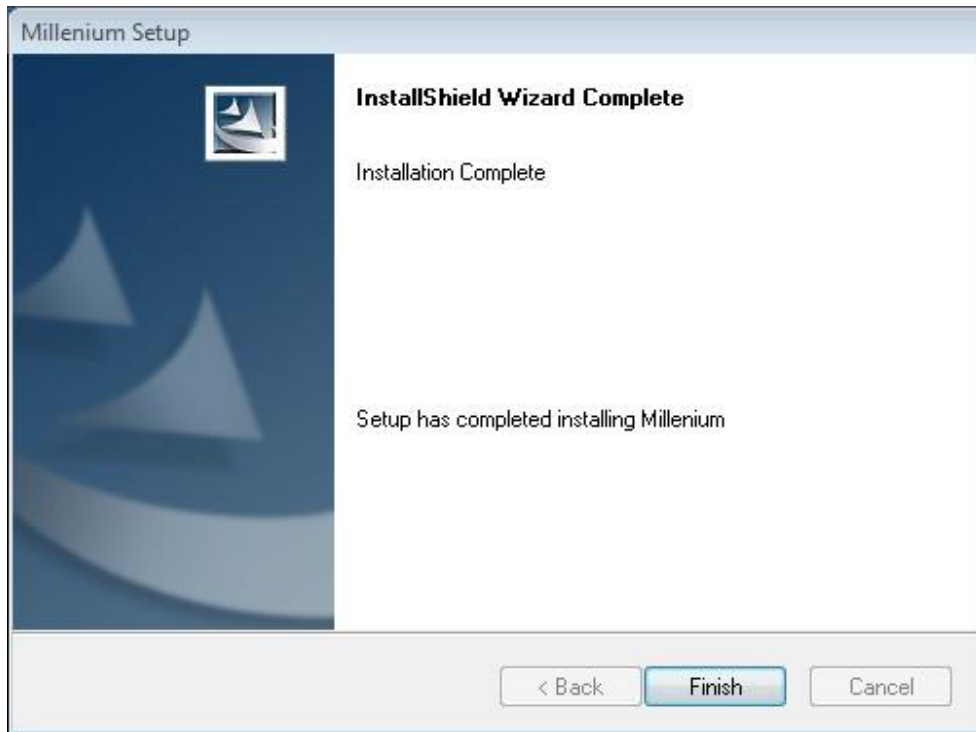
7. The **Select Program Folder** screen will be displayed. It is recommended to leave this at default Program Folder, **Millennium**. Click **Next** to continue:



8. The **Setup Status** screen will be displayed and the Millennium software installation will begin. Wait for the installation to complete:



9. Once the software installation has finished, the **InstallShield Wizard Complete** screen will be displayed. Click **Finish** to complete the installation of the Millennium Server software:

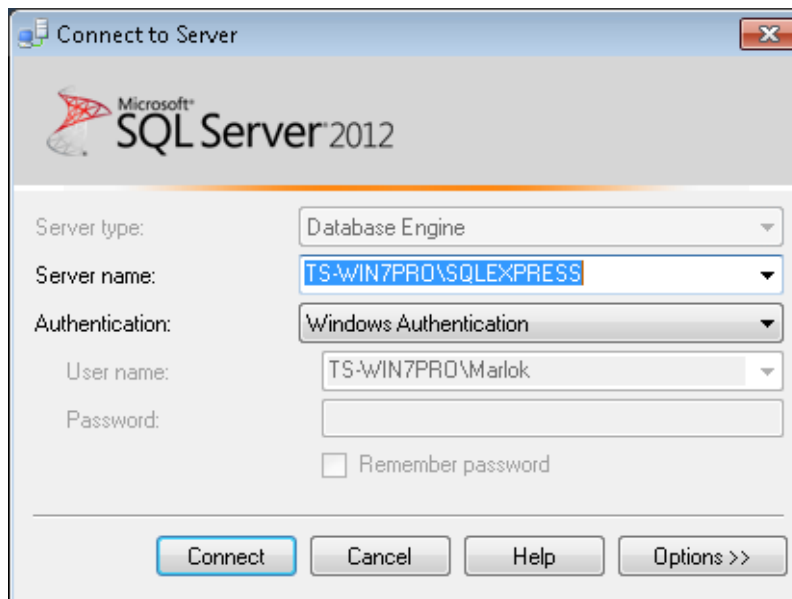


Note Before you can click the **Finish** button, you must click the **Taskbar** and then you will be able to click the **Finish** button.

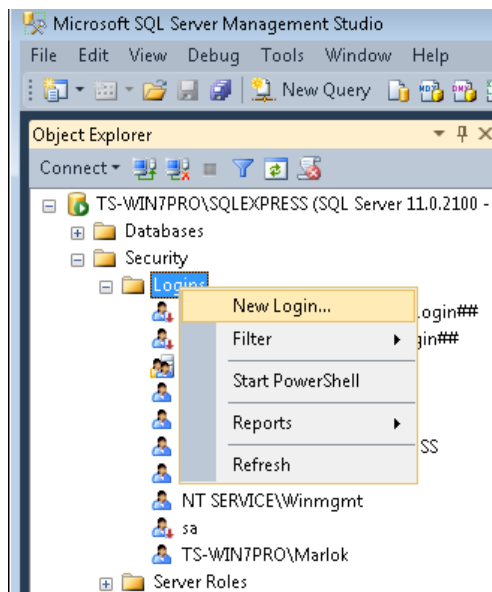
Creating SQL Server Logins for Millennium Workstation Connections

In order for Millennium Workstations to be able to connect to the Millennium Server, workstation logins must be created in SQL Server on the Millennium Server and the appropriate permissions must be assigned so that these logins can access the Millennium databases.

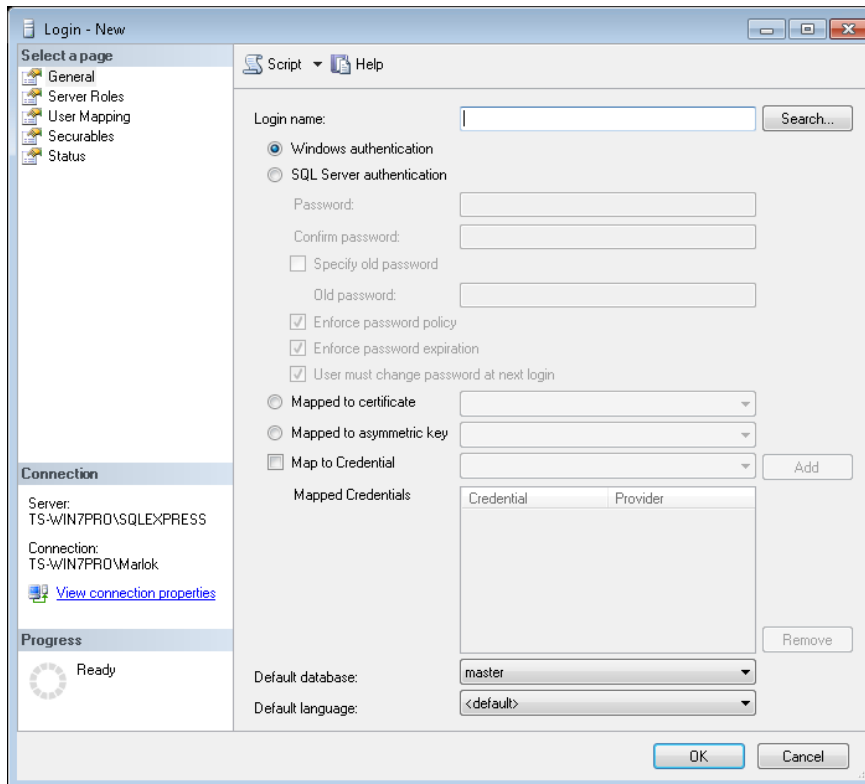
1. On the Millennium Server, go to **Start > All Programs > Microsoft SQL Server 2012** and launch **SQL Server Management Studio**.
2. **SQL Server Management Studio** will open and a login screen will be displayed. Click **Connect** to login to SQL Server using the account you are logged into Windows with:



3. In the left-hand pane, expand **Security**. Then right-click on **Logins** and select **New Login**:



4. The **Login – New** screen will be displayed:

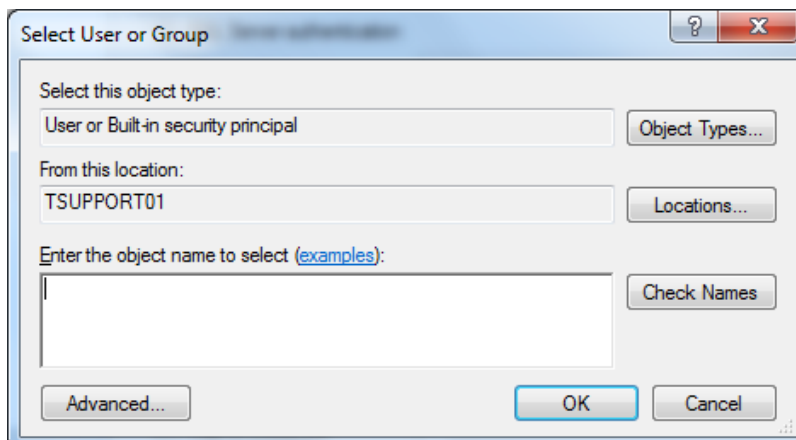


If the SQL Server (usually also the Millennium Server) is on a Windows Domain, you can use either a Windows login or create a SQL Server Login. If the SQL Server is not a member of a Windows Domain, you must create a SQL Server Login and use SQL Server Authentication.

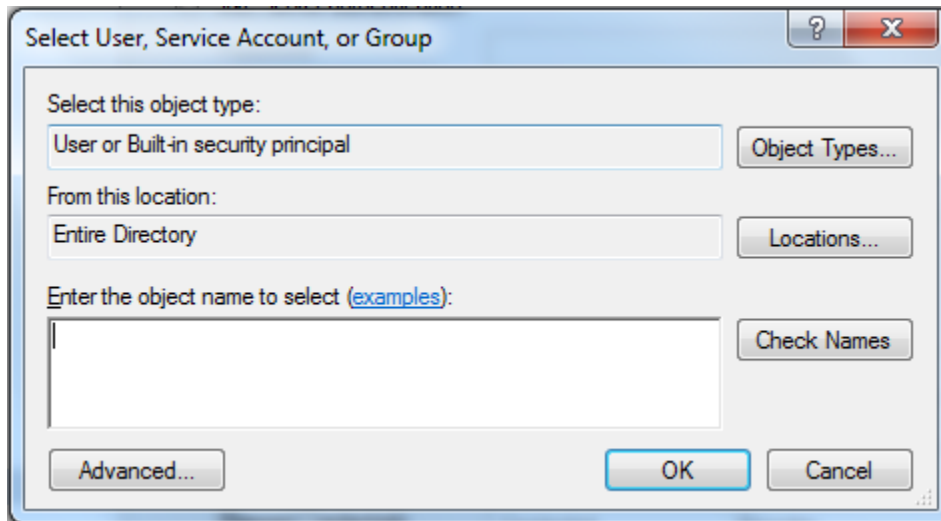
If you are using Windows Authentication, the Windows login of every person who needs to run the Millennium Software must be added as a login within SQL Server as well.

Creating a SQL Server Login using Windows Authentication

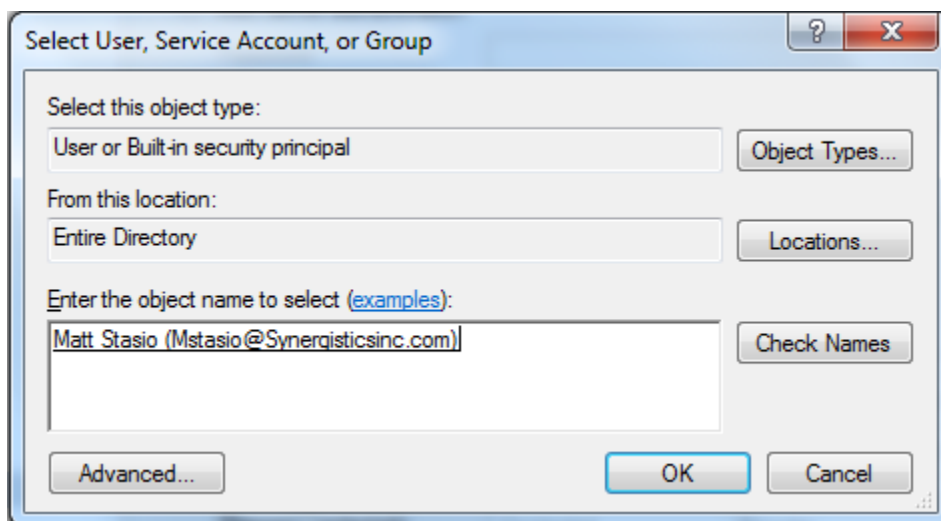
1. If creating a Windows Login in SQL Server, make sure that Windows Authentication is selected. Click Search:



2. The **From this location** box defaults to the local server. Typically, if you want to add a Windows Domain login, you must click the **Locations** button and select **Entire Directory** and click **OK**:



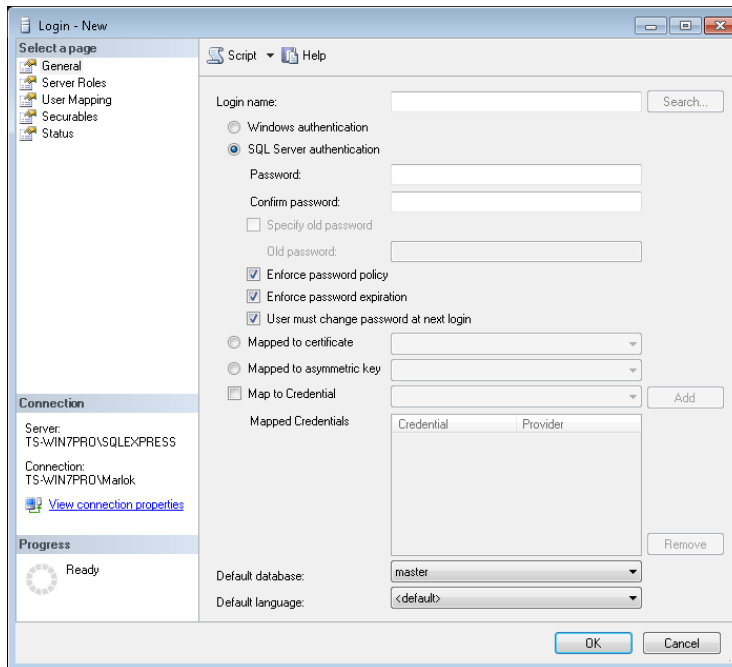
3. Type the Windows Domain login name in the **Enter the object name to select** box. Click **Check Names** to verify that the name is accepted. Click **OK**:



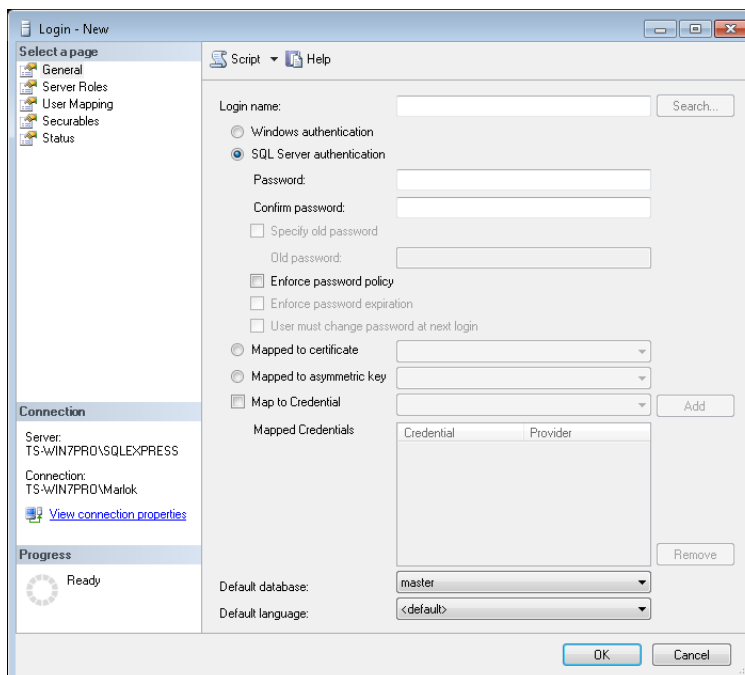
The Windows Domain account has now been added as a SQL Server Login.

Creating a SQL Server Login using SQL Authentication

1. If creating a SQL Server Login, ensure that the **SQL Server authentication** radio button is selected:



2. SQL Server provides several options for password management. If **Enforce password policy** is enabled, a complex password will be required. **Enforce password policy** setting is up to you and the customer. For the purposes of Millennium, it is recommended that **Enforce password expiration** and **User must change password at next login** be disabled (unchecked):



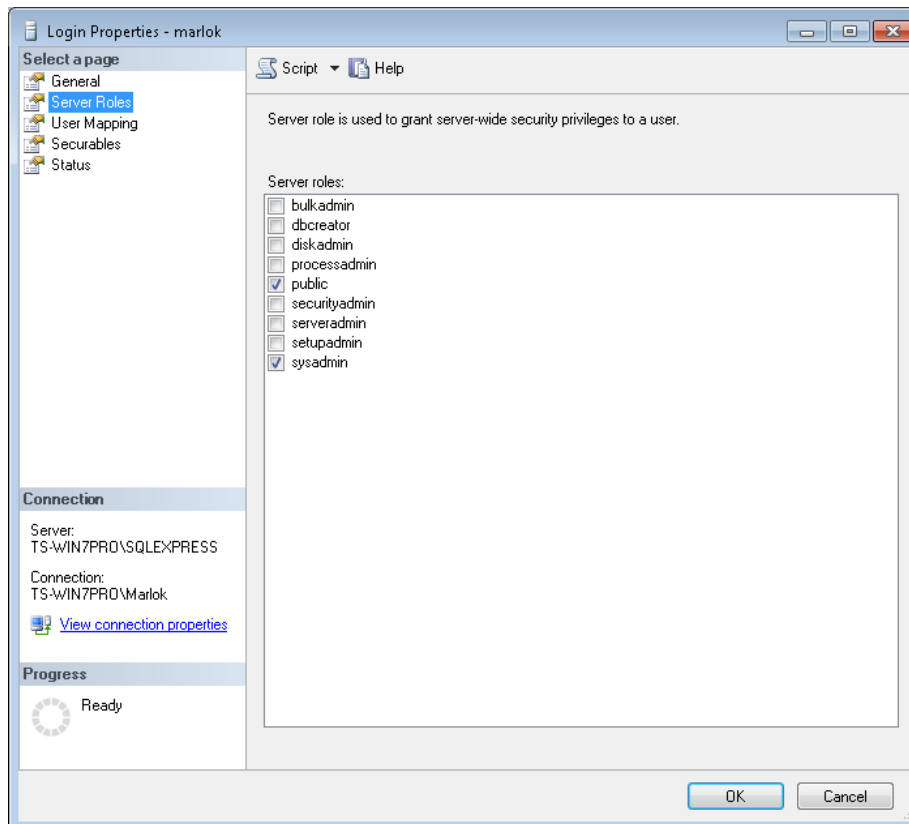
3. Enter a **Login name** and a **Password** in both the **Password** and **Confirm password** boxes. Keep in mind that if **Enforce password policy** is enabled, SQL Server will require that the password entered meets the complexity requirements of the Windows policy in place on the server. Click **OK** to create the new login.

The screenshot shows the 'Login - New' dialog box in SQL Server Enterprise Manager. The 'General' tab is selected in the left-hand pane. The 'Login name' field contains 'Marlok'. Under 'Authentication', 'SQL Server authentication' is selected. The 'Password' and 'Confirm password' fields are filled with masked characters (dots). The 'Specify old password' checkbox is unchecked. The 'Enforce password policy' checkbox is checked. The 'Mapped to certificate', 'Mapped to asymmetric key', and 'Map to Credential' options are not selected. The 'Mapped Credentials' table is empty. The 'Default database' is set to 'master' and the 'Default language' is set to '<default>'. The 'Connection' pane on the left shows the server 'TS-WIN7PRO\SQLEXPRESS' and the connection 'TS-WIN7PRO\Marlok'. The 'Progress' pane shows a 'Ready' status. The 'OK' and 'Cancel' buttons are at the bottom right.

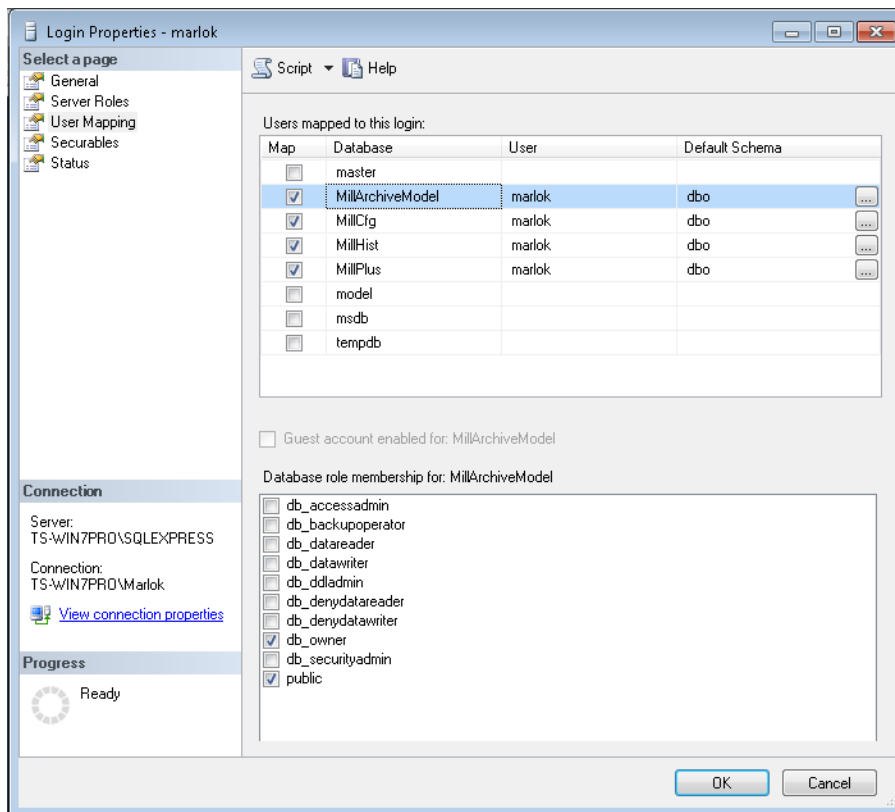
Assigning the required permissions to the newly created SQL Server Logins

Note This section of the procedure is the same regardless of whether the SQL Server Login is using Windows Authentication or SQL Server Authentication.

1. In the left-hand pane of **SQL Server Management Studio**, expand **Security** and then **Logins**. The list of SQL logins will be displayed. Locate the SQL Server Login that you just created, right-click on it and **Properties**.
2. In the left-hand pane, click on **Server Roles**. Ensure that the checkbox next to **sysadmin** is checked. Click **OK**.



3. In the left-hand pane, click on **User Mapping**. Check the checkboxes next to all 4 Millennium databases: **MillArchiveModel**, **MillCfg**, **MillHist**, **MillPlus**. Select each database and ensure that both **public** and **db_owner** are checked in the box labelled **Database role membership for**:



note Make sure **db_owner** and **public** are selected for each of the 4 databases.

4. Repeat the process for all other SQL Server logins that you created.

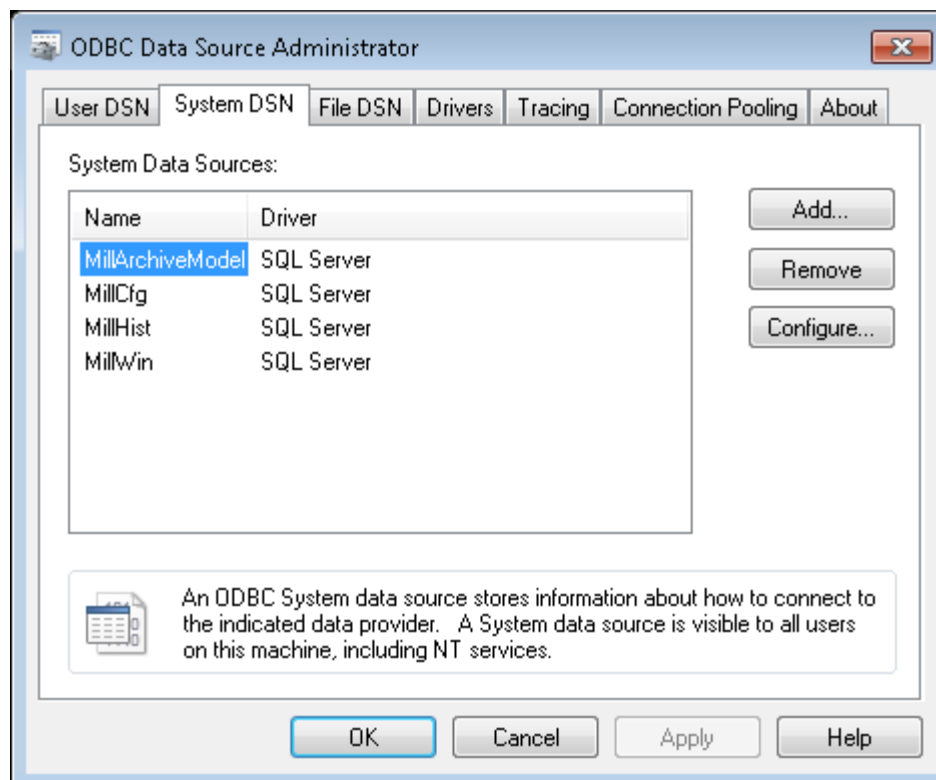
Configuring ODBC Data Sources on Workstation

The Millennium Expert/Enterprise workstation software uses ODBC connections to connect to the Millennium databases on the server. The ODBC Data Sources must be properly configured on the workstation in order for the software to run. The procedure for configuring the ODBC Data Sources varies slightly depending on whether the Windows Operating System on the server is 32 bit or 64 bit.

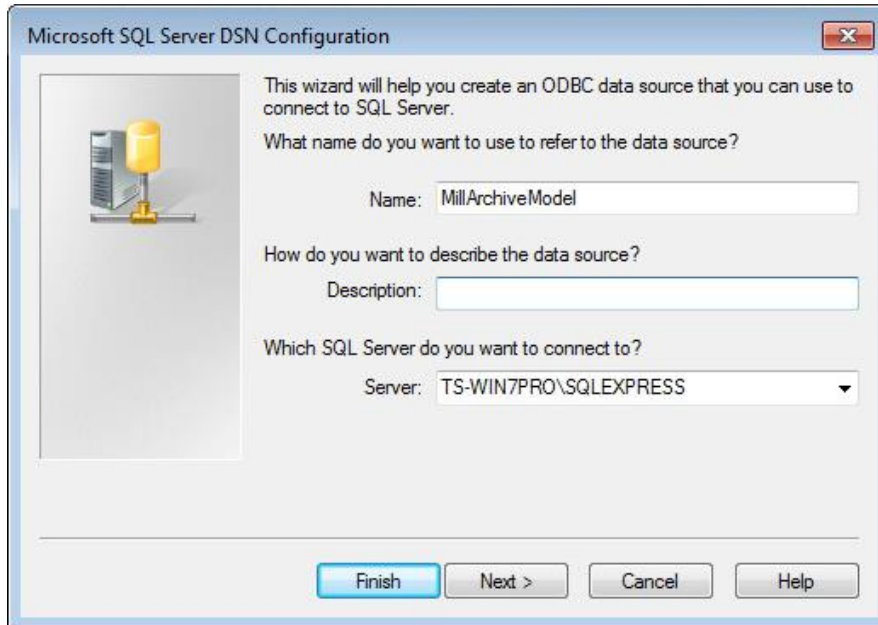
1. If the Windows Operating System is a 32 bit version, open the **ODBC Administrator** by going to **Control Panel > Administrative Tools > Data Sources (ODBC)**

If the Windows Operating System is a 64 bit version, open the **ODBC Administrator** by opening **Windows Explorer** and going to the **Windows\SysWOW64** folder and executing the file called **odbcad32.exe**.

2. The **ODBC Data Source Administrator** window will be displayed. Click the **System DSN** tab:



3. Select the first System Data Source, **MillArchiveModel**, and click **Configure**. In the **Which SQL Server do you want to connect to?** box, enter the server name and SQL instance name. For instance, the server name in the example below is TS-WIN7PRO and the SQL Instance name is SQLEXPRESS. Click **Next**:



Microsoft SQL Server DSN Configuration

This wizard will help you create an ODBC data source that you can use to connect to SQL Server.

What name do you want to use to refer to the data source?

Name: MillArchiveModel

How do you want to describe the data source?

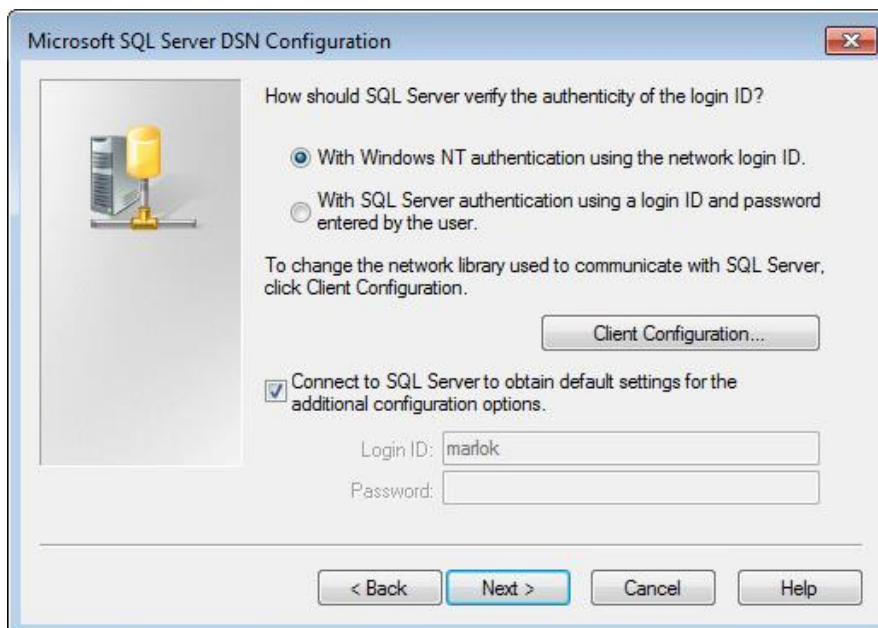
Description:

Which SQL Server do you want to connect to?

Server: TS-WIN7PRO\SQLEXPRESS

Finish Next > Cancel Help

4. The authentication used to connect to the SQL Server must be specified. If the Millennium Server is on a Windows Domain, you can use either Windows Authentication or SQL Server Authentication. If the Millennium Server is not a member of a Windows Domain, you must use SQL Server Authentication. In either case, the Windows login account or the SQL Server login must be added to the SQL Server installation on the Millennium Server and granted the appropriate permissions to the Millennium databases.



Microsoft SQL Server DSN Configuration

How should SQL Server verify the authenticity of the login ID?

☒ With Windows NT authentication using the network login ID.

☐ With SQL Server authentication using a login ID and password entered by the user.

To change the network library used to communicate with SQL Server, click Client Configuration.

Client Configuration...

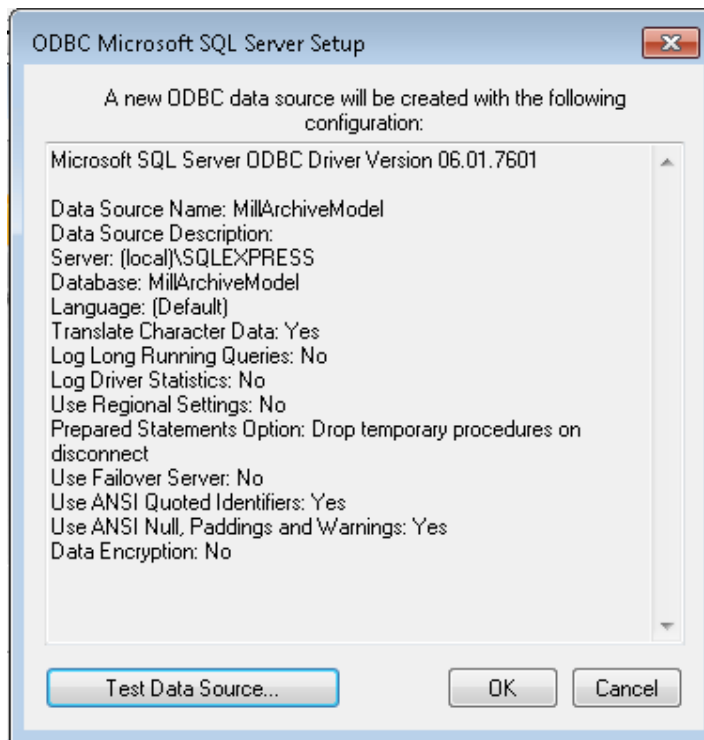
☒ Connect to SQL Server to obtain default settings for the additional configuration options.

Login ID: marlok

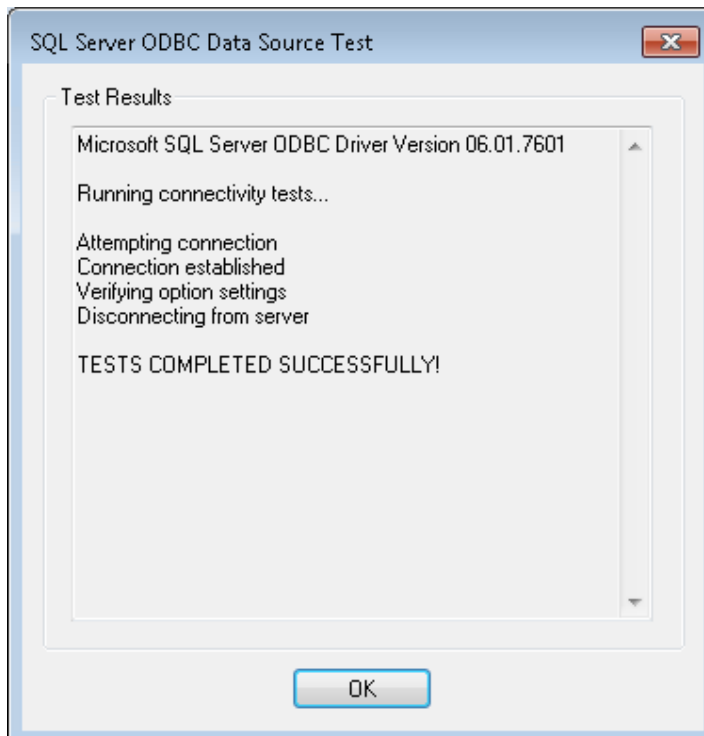
Password:

< Back Next > Cancel Help

5. The **ODBC Microsoft SQL Server Setup** window will be displayed. Click **Test Data Source**:



6. Verify that you receive a message indicating **TESTS COMPLETED SUCCESSFULLY!** Click **OK** to close the window and then click **OK** again to return to the **ODBC Data Source Administrator**.



7. Repeat the steps for the remaining 3 ODBC **System Data Sources: MillCfg, MillHist, MillWin.**
8. This completes the configuration of the ODBC Data Sources on the Millennium Server.

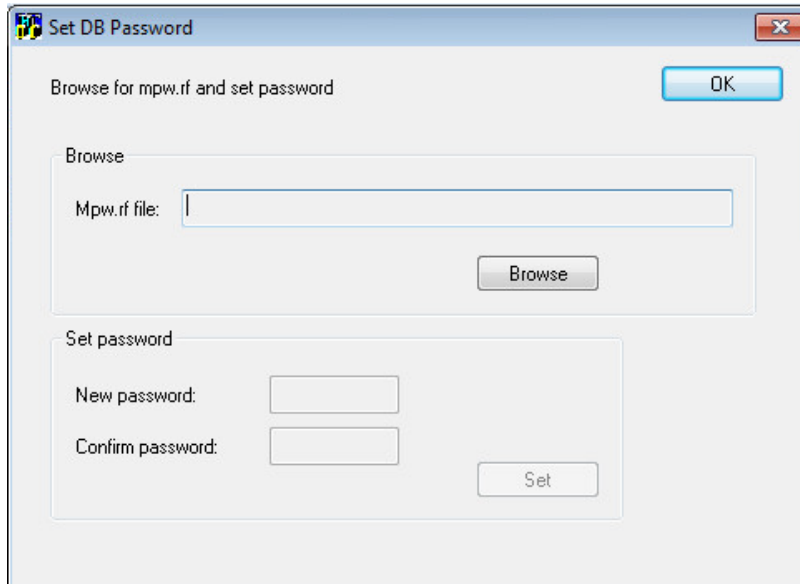
Setting the RF Password

This section is only necessary if you are using a SQL Server login with **SQL Authentication**. If your SQL Server logins use Windows Authentication, you can skip this section.

If you are using **SQL Server Authentication**, you must perform the steps below on the server and all workstations.

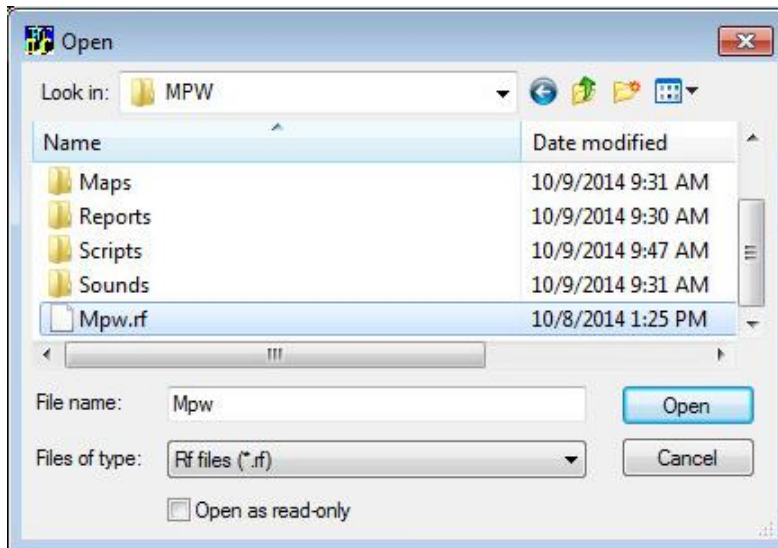
1. Open Windows Explorer on the **Server** and go to the folder where you installed Millennium to. This is typically **C:\MPW**. Open the **C:\MPW\Scripts** folder. Double-click on the file **RfSetPswd.exe** to execute it. The **Set DB Password** utility will open.

Note If you are on a **Workstation** that is going to use **SQL Authentication**, you will need to copy the file **RfSetPswd.exe** from the Server to the Workstation and then execute it from the Workstation.



The screenshot shows a Windows-style dialog box titled "Set DB Password". The dialog has a standard title bar with a close button. The main content area is divided into two sections. The top section is titled "Browse for mpw.rf and set password" and contains a text input field labeled "Mpwr.rf file:" with a "Browse" button to its right. The bottom section is titled "Set password" and contains two text input fields: "New password:" and "Confirm password:". To the right of these fields is a "Set" button. An "OK" button is located in the top right corner of the dialog box.

2. Click **Browse** and navigate to the MPW installation folder, select the file named **Mpw.rf** and click **Open**.



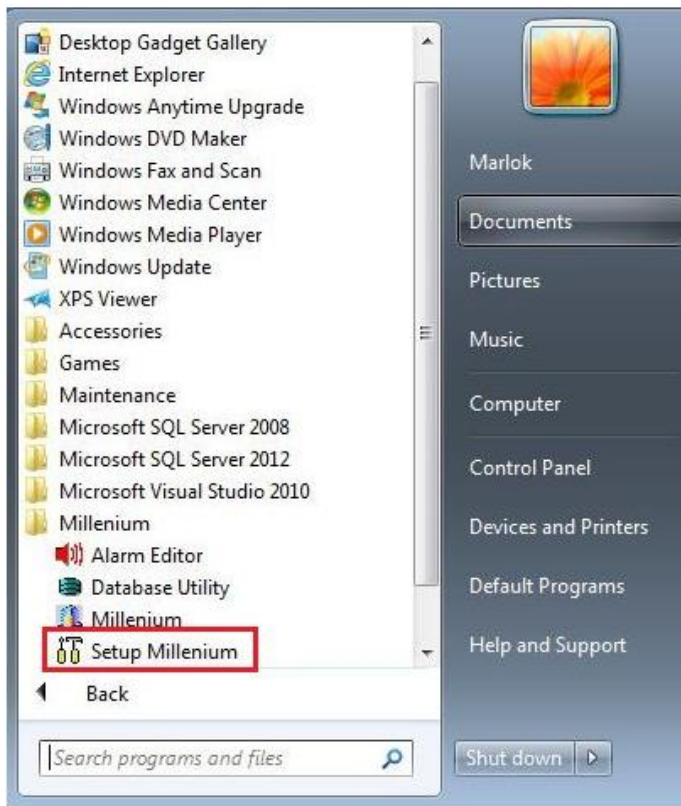
3. In the **Set password** section, type the password you assigned when creating the SQL Server login in both the **New password** and **Confirm password** boxes. Click **Set** to save the password.



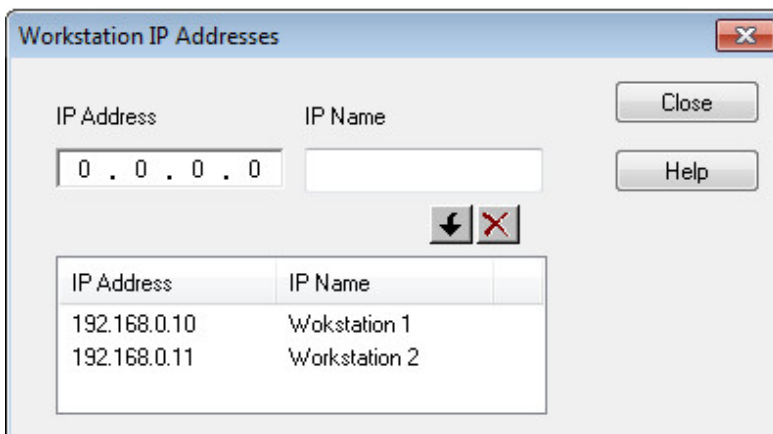
4. Click **OK** to clear the message and click **OK** again to exit the **Set DB Password** program.

Configuring the Workstation and Server IP's in Setup Millennium

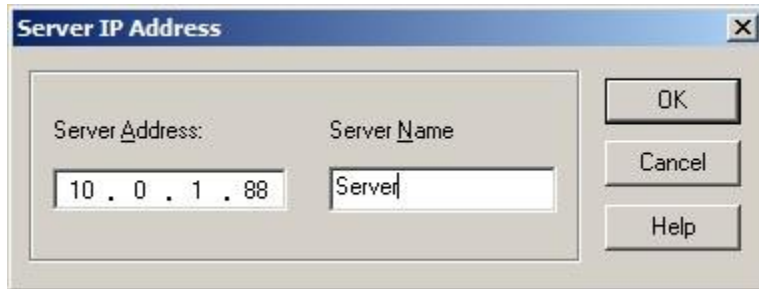
1. On the Millennium server, go to **Start > All Programs > Millennium > Setup Millennium**.



2. Login to the **Setup Millennium** program and select **Options > Configuration Workstation Addresses** from the menu. Enter the workstation IP Address and IP Name and then click the down arrow (↓) button. If there are more than one workstations, add the IP Address and IP Name for each of them and click Close once complete.



3. On the Millennium Workstation, run the **Setup Millennium** program from the **Start Menu**. Login to the Setup Millennium program and select **Options > Configure Server Address** from the menu.
4. Enter the **Server Address** and **Server Name**. Click **OK** to save.



5. This completes the configuration of the Workstation and Server IP addresses.