



# **Millennium Ultra**

How to...

## **How to enable encryption between ESCU/NetDCD and Millennium Ultra server software**

**Version 1.0**

**June 8, 2017**

**Millennium Group, Inc.**

16 Tech Circle  
Natick, MA 01760  
P: 508-655-1340  
F: 508-651-2902

# **How to enable encryption between ESCU/NetDCD and Millennium Ultra server software**

## **Purpose**

The purpose of this document is to provide guidance to Millennium Authorized Dealers regarding the proper ESCU/NetDCD configuration

## **Disclaimer**

The Millennium Group provides this publication "as is" without expressed or implied warranty. Millennium Group Inc. shall not be liable for errors or omissions in this document, nor for incidental or consequential damages in connection with the use of this guide.

## **Installers Note**

Install all products according to relevant building codes

## **Copyright**

© Millennium Group Inc. 2017. All rights reserved.

This publication is protected by copyright and all rights are reserved by the Millennium Group. It may not, in whole or in part be copied, photocopied, reproduced, translated or reduced to any electronic medium or machine-readable form without the prior consent of the Millennium Group.

## Version requirements

The protocol encryption functionality available for all ESCU/NetDCD boards with firmware version from 6C build #1 and up. Millennium Ultra software version should be version 1.0.9.0 and up. If operator uses SCU Configuration Utility software for the board configuration, the software version should be 5.0.0.0 and up.

## How to enable the protocol encryption in Millennium Ultra software

To enable the protocol encryption in Millennium Ultra software operator should open Hardware->Sites page, enable checkbox “Use Encryption” and press “Generate Key” button to generate the key.

The screenshot shows the 'Sites' configuration window in the Millennium Ultra software. On the left is a sidebar with icons for various hardware components: Controller Owner ID, Firmware, Sites (selected), Doors, ECU, Floors, RCD, RCD Relays, Elevator Cars, and Add New Site. The 'Filter by tenant' dropdown is set to 'All', and 'Quick Filter' is also visible. The main configuration area for 'Site1' includes fields for Site Name, Description, On Line status (checked), Tenant (Global), Firmware (DCD-1), Number (1), Anti-passback (Not Used), MAC Address (00:00:00:00:00:00), Connection mode (Controller to host), IP Address (192.100.0.4), Port (2200), Day-light saving (Enabled), and Time zone ((UTC-05:00) Eastern Time (US & Canada)). There is an unchecked checkbox for 'Enable card expiration time' and a checked checkbox for 'Use Encryption'. The 'Encryption Key' field displays the value 6B9B7DC708804D2DC03BD9AFC0F58CD5. Buttons for 'Configure board', 'Execute', 'Change Tenant', and 'Generate Key' are present. At the bottom right are buttons for 'New', 'Cancel', 'Save', 'Delete', and 'Close'.

Picture 1. Sites page with the protocol encryption enabled

## How to enable the protocol encryption for ESCU/NetDCD board via board web interface

To enable the protocol encryption via ESCU/NetDCD board web interface type the board IP address in any browser (in case of using Internet Explorer the page should be added to “Compatibility View”). Before using the protocol encryption we recommend to enable the password protection for the board web interface. To enable the password protection just enter the new password to “New Password” and “Confirm Password” fields.

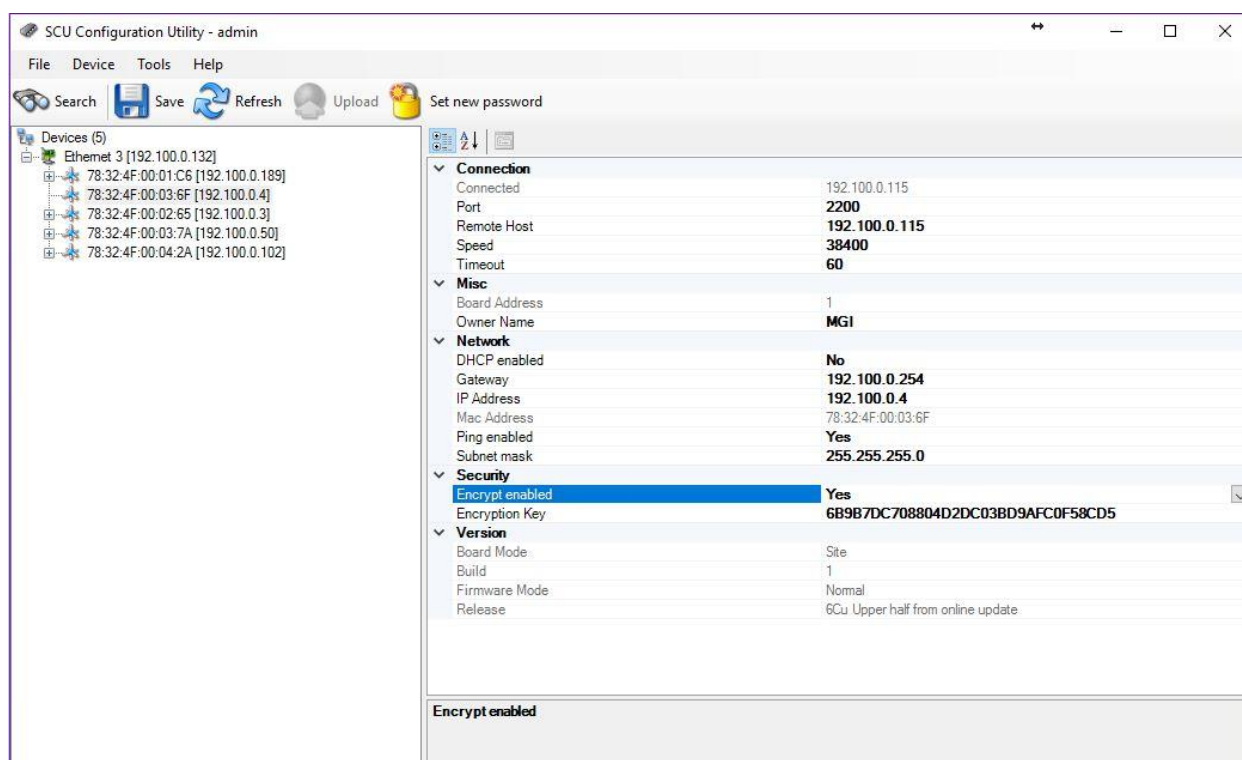
To enable the encryption select “Enable” for “Encrypt” field and copy the encryption key from Ultra software to “Encryption Key(32 hex digits)” field. Or you can generate the encryption key by the page and copy to Ultra software.

SingleBoard Release: 6Cu Build: 1  
Status: Connected to 192.100.0.115  
Board Mode:   
Distributor Mode:   
Board Address:   
  
MAC Address:  
       
IP Address:  
     
Subnet:  
     
Gateway:  
     
Port:   
  
Remote Host:  
     
  
Speed:   
Disconnect timeout seconds:   
Ping:   
DHCP:   
Encrypt:   
Encryption Key(32 hex digits):  
  
New Password:  
  
Confirm Password:

Picture 1. Board web configuration page with protocol encryption enabled

## How to enable the protocol encryption for ESCU/NetDCD board via SCU Configuration Utility software

To enable the protocol encryption via SCU Configuration Utility software you need to run the software, login (default login/password – admin/admin), search for the controller, select the controller and select for “Encrypt enabled” field “Yes” value. After this you need to copy the encryption key from Ultra software or you can generate the key in SCU Configuration Utility software and copy to the Ultra software. Any way will work as far as you have the same key for the software and the board. Different sites can use the same or different encryption keys.



Picture 3. SCU Configuration Utility software page with the protocol encryption enabled for the site